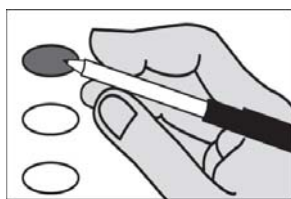


A F3000 B Spokane County Washington C May 24, 2016

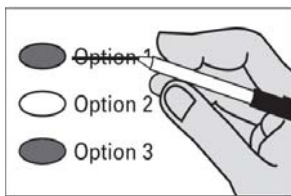
Instructions

Marking Your Ballot



Use a dark pen. Completely fill in the oval to the left of your choice. Voting for more than one candidate will be an overvote and no votes for this ballot will be counted. To vote for a candidate whose name is not printed on the ballot, write the name on the line provided and fill in the oval.

Correcting Your Ballot



To make a correction, draw a line through the entire response. You then have the option of making another choice. In order for your ballot to be counted, it must be either postmarked or deposited at a designated deposit site no later than 8:00 p.m. on Election Day (May 24, 2016). A list of Ballot Drop Box locations may be found at www.spokanecounty.org/elections.

Important Presidential Primary Voting Instructions

Sign and date the declarations on the return envelope.

For a replacement ballot, contact the Spokane County Elections Office at (509) 477-2320 or by email elections@spokanecounty.org.

For a list of Voter Service Centers or ballot drop box locations please refer to the insert that was included with your ballot material.

For a list of the people and organizations that donated to Presidential candidates' campaigns, visit www.fec.gov.

Democratic Party

Hillary Clinton

Bernie Sanders

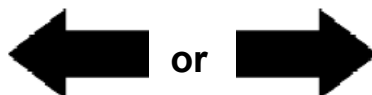
Republican Party

Ben Carson

Ted Cruz

John R. Kasich

Donald J. Trump



Vote for ONE party candidate.

Your voted party selection must match your party choice on the return envelope.

Please refer to the 7 easy steps for voting in the Presidential Primary insert provided with your ballot material.

A Typ:01 Seq:0001 Spl:01 B Presidential Primary C 3000