

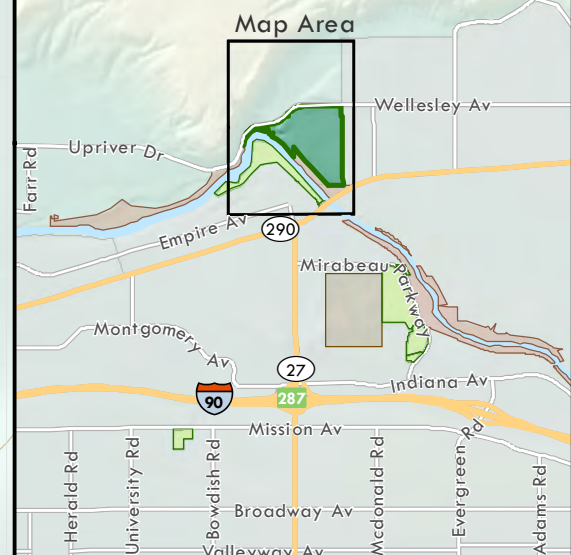
117.244772° W

117.236605° W

From I-90:

- Exit at Argonne Rd, Exit #287
- Drive north on N Argonne Rd for 1.8 Mi
- Turn right onto E Upriver Dr, Drive for 2.1 Mi
- Plante's Ferry Sports Complex will be on the right
- Various Parking types are available.

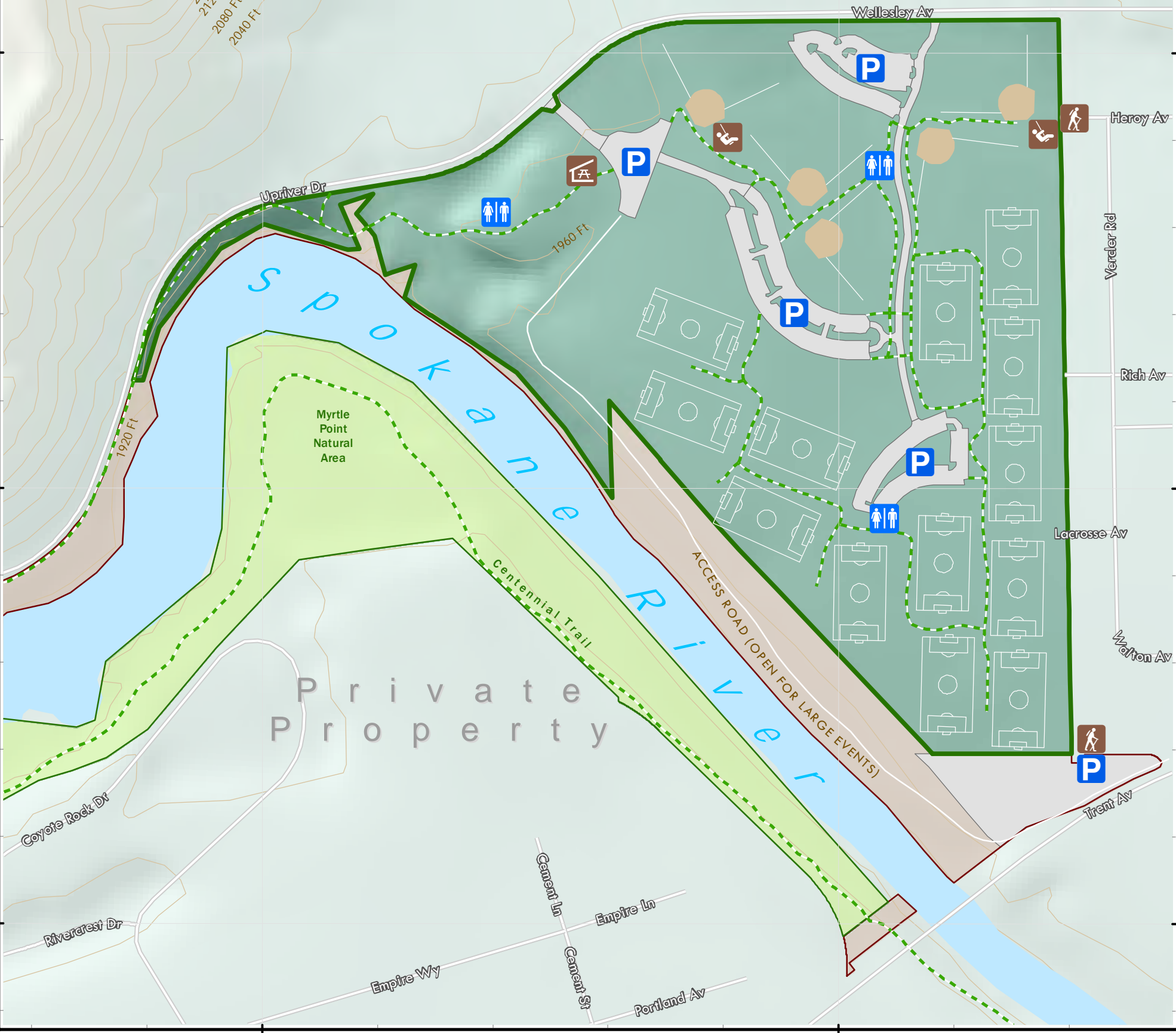
County Park Ranger Contact Information:
509-998-8807



Private
Property

47.704167° N
47.691667° N

47.704167° N
47.691667° N



Spokane County ([Website](#))

- Plante's Ferry Sports Complex
- Other Spokane County Parks
- Washington State Parks ([Website](#))
- City of Spokane Valley Parks ([Website](#))
- Dept. of Natural Resources ([Website](#))

- Trail
- Public Access
- Parking
- Restroom
- Playground
- Picnic Shelter

Plante's Ferry Sports Complex

Owned by Spokane County
 Co-Managed by Spokane County & SVJSA

Spokane County Geographic Information Systems
 Map Produced: June 2014



Contour Interval: 40 Ft

Note: This is a GIS map showing base layers rendered for "best fit" with digital orthophotography. While every attempt is made to ensure the accuracy of this information, no warranty accompanies this map. If you have any additional questions, please contact the Spokane County Parks department at: 509-477-4730.