

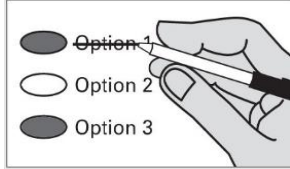
Instructions

Marking Your Ballot



Completely fill in the oval to the left of your choice. Use a dark pen. Unless specifically allowed by law, more than one vote for a ballot measure will be an over vote and no votes for that office or ballot measure will be counted.

Correcting Your Ballot



If you make a correction, draw a line through the entire response. You then have the option of making another choice if you wish.

In order for your ballot to be counted, it must be either postmarked or deposited at a designated deposit site no later than 8:00 p.m. on Election Day (April 26, 2016).

A list of deposit sites may be found at www.spokanecounty.org/elections.

Proposition No. 1

City of Spokane

EMS – Emergency Medical Services Levy

The City of Spokane approved Resolution No. 2016-0021, authorizing a ballot proposition imposing additional regular property tax levies to be used exclusively for EMS – Emergency Medical Services for the years 2017 through 2022 in the sum of 50¢ per \$1,000 of 2016 assessed value as set forth in Ordinance No. C35366.

Shall the City of Spokane be authorized to impose regular property tax levies in the sum of 50¢ per \$1,000 of 2016 assessed valuation for the continued provision of EMS – Emergency Medical Services for each year for six consecutive years to be collected in 2017 through 2022 inclusive?

Yes

No

Proposition No. 1

Rosalia Park and Recreation District No. 5

Shall the Rosalia Park and Recreation District No. 5 be authorized to impose a special (excess) tax levy of \$0.36 per thousand dollars of assessed valuation, to be collected in the year 2017, in order to collect \$60,000.00 for the Rosalia Park & Swimming Pool, to help defray the costs of operation and maintenance? Should this proposition be approved?

Yes

No

Voter Service Centers will be open on Election Day (April 26, 2016) only from 7:00 a.m. to 8:00 p.m. Voters may drop off ballots; get replacement ballots; use an Accessible Voting Unit, or receive other assistance as needed on Election Day.

Downtown Spokane - Elections Office - 1033 W Gardner Ave ;

Downtown Spokane – STA Plaza – 701 W Riverside Ave

North Spokane – N. Spokane Library - 44 E Hawthorne Rd;

South Hill – St. Mark’s Church – 316 E 24th Ave

Ballot Drop Box locations are available 20 days prior to Election Day

Airway Heights Library – 1213 S Lundstrom St; **Argonne Library** - 4322 N Argonne Rd;

Downtown Spokane Library – 906 W Main Ave; **East Side Library** 524 S Stone St;

Elections Office -1033 W Gardner Ave; **Hillyard Library** - 4005 N Cook St;

Indian Trail Library - 4909 W Barnes Rd; **Moran Prairie Library** - 6004 S Regal St;

North Spokane Library - 44 E Hawthorne Rd; **Shadle Library** - 2111 W Wellesley Ave;

South Hill Library – 3324 S Perry St; **STA Plaza** - 701 W Riverside Ave

In order for your ballot to be counted, it must be either postmarked or deposited at a designated deposit site no later than 8:00 p.m. on Election Day (April 26, 2016). If depositing your ballot in a US Postal Service box, you must include first class postage (\$0.49). **The Elections Office is open from 8:30 a.m. to 4:00 p.m. weekdays** to answer questions; get replacement ballots; use an Accessible Voting Unit, or receive other assistance as needed.

Spokane County Elections 1033 W Gardner Ave Spokane WA 99260

509-477-2320 website: www.spokanecounty.org/elections email: elections@spokanecounty.org

For a list of the people and organizations that donated to ballot measure campaigns, visit www.pdc.wa.gov