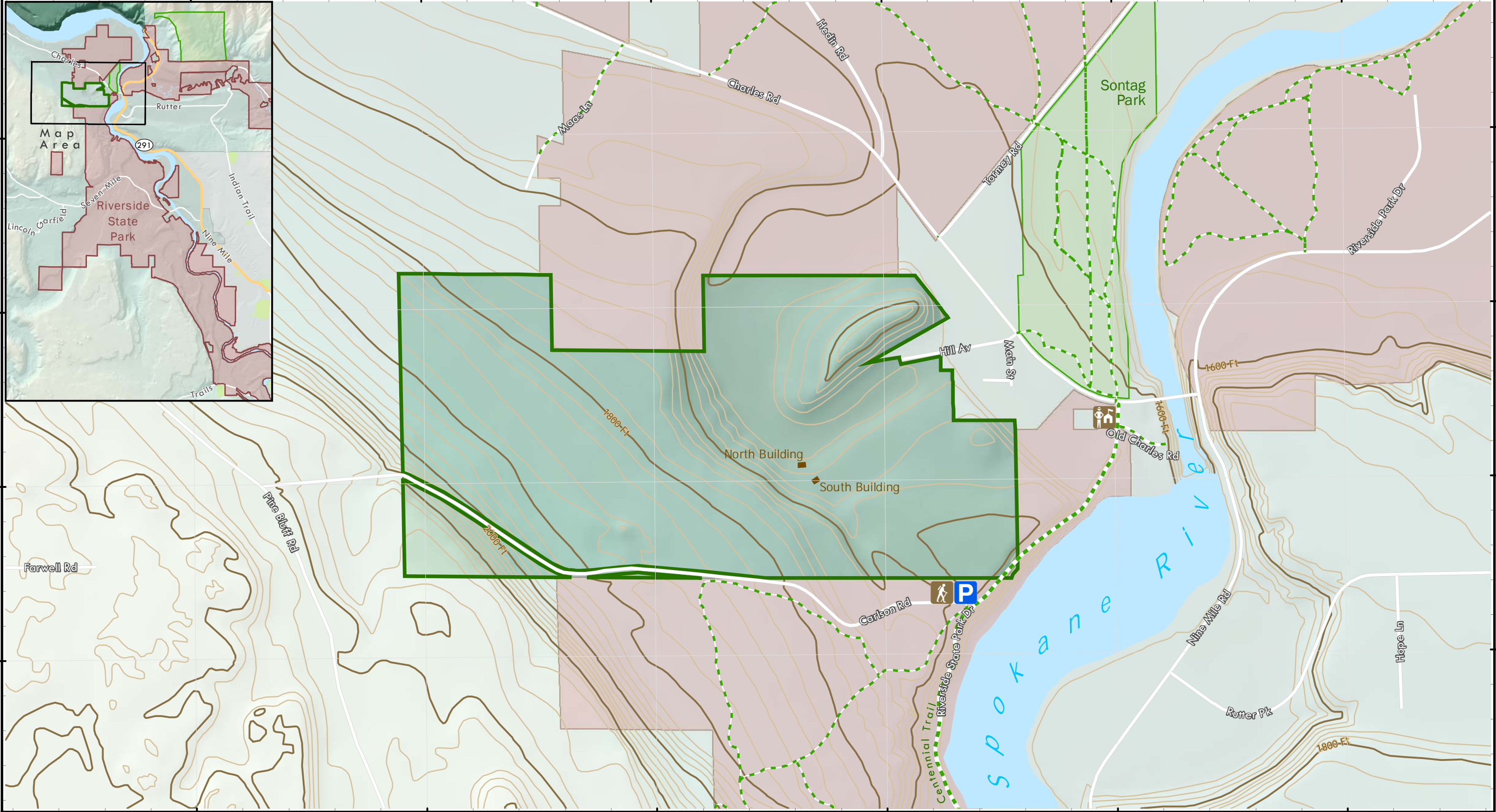

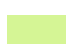







117.579619° W 117.571452° W 117.563285° W 117.555118° W 117.546951° W 117.538784° W

47.783333° N 47.779167° N 47.775° N 47.770833° N


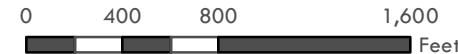
117.579619° W 117.571452° W 117.563285° W 117.555118° W 117.546951° W 117.538784° W



-  Trautman Conservation Area
-  City of Spokane Parks [\(Website\)](#)
-  Washington State Parks [\(Website\)](#)
-  Trails
-  State Parks Trailhead
-  Parking
-  Riverside State Park Headquarters

Trautman Conservation Area

Spokane County
Geographic Information Systems
Map Produced: October 2015

Contour Interval: 20 Ft

Note: This is a GIS map showing base layers rendered for "best fit" with digital orthophotography. While every attempt is made to ensure the accuracy of this information, no warranty accompanies this map. If you have any additional questions, please contact the Spokane County Parks department at: 509-477-4730.

