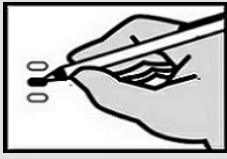
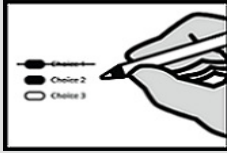


**Sample Ballot**  
**Spokane County Washington**  
**August 2, 2022 Primary Election**



Completely fill in the oval to the left of your choice. Vote for only one candidate in each contest. Use a dark blue or black pen.

Unless specifically allowed by law, more than one vote for a contest will be an overvote and no votes for that ballot contest will be counted. To vote for a candidate whose name is not printed on the ballot, write the name on the line provided and fill in the oval.



If you make a correction or mismark your ballot, draw a line through the entire response. You then have the option of making another choice.

In order for your ballot to be counted, it must either be postmarked no later than election day or deposited at a ballot drop box no later than 8:00 p.m. on election day, August 2, 2022.

For a list of the people and organizations that donated to state and local candidates and ballot measure campaigns, visit [www.pdc.wa.gov](http://www.pdc.wa.gov).

**READ: Each candidate for partisan office may state a political party that he or she prefers. A candidate's preference does not imply that the candidate is nominated or endorsed by the party, or that the party approves of or associates with that candidate.**

**Federal - Partisan Office**

**U.S. Senator**

- Henry Clay Dennison  
*(Prefers Socialist Workers Party)*
- Mohammad Hassan Said  
*(Prefers Democratic Party)*
- John Guenther  
*(Prefers Republican Party)*
- Tiffany Smiley  
*(Prefers Republican Party)*
- Dan Phan Doan  
*(States No Party Preference)*
- Dr Pano Churchill  
*(Prefers Democratic Party)*
- Dave Saulibio  
*(Prefers JFK Republican Party)*
- Sam Cusmir  
*(Prefers Democratic Party)*
- Bill Hirt  
*(Prefers Republican Party)*
- Jon Butler  
*(Prefers Independent Party)*
- Bryan Solstin  
*(Prefers Democratic Party)*
- Martin D. Hash  
*(States No Party Preference)*
- Patty Murray  
*(Prefers Democratic Party)*
- Thor Amundson  
*(Prefers Independent Party)*
- Charlie (Chuck) Jackson  
*(Prefers Independent Party)*
- Naz Paul  
*(Prefers Independent Party)*
- Ravin Pierre  
*(Prefers Democratic Party)*
- Leon Lawson  
*(Prefers Trump Republican Party)*
- \_\_\_\_\_

**Congressional District 5 - Partisan Office**

**U.S. Representative**

- Cathy McMorris Rodgers  
*(Prefers Republican Party)*
- Natasha Hill  
*(Prefers Democratic Party)*
- Sean Clynych  
*(Prefers Republican Party)*
- Ann Marie Danimus  
*(Prefers Democratic Party)*
- \_\_\_\_\_

INTENTIONALLY LEFT BLANK

**State of Washington - Partisan Office**

**Secretary of State**

Unexpired 2 year term

- Bob Hagglund  
*(Prefers Republican Party)*
- Kurtis Engle  
*(Prefers Union Party)*
- Marquez Tiggs  
*(Prefers Democratic Party)*
- Tamborine Borrelli  
*(Prefers America First (R) Party)*
- Steve Hobbs  
*(Prefers Democratic Party)*
- Keith L. Wagoner  
*(Prefers Republican Party)*
- Mark Miloscia  
*(Prefers Republican Party)*
- Julie Anderson  
*(Prefers Nonpartisan Party)*
- \_\_\_\_\_

**Legislative District 3 - Partisan Office**

ONLY REGISTERED VOTERS IN LEGISLATIVE DISTRICT 3 ARE ELIGIBLE TO VOTE ON THE FOLLOWING

**State Representative Pos. 1**

- Marcus Riccelli  
*(Prefers Democratic Party)*
- Scotty Nicol  
*(Prefers Republican Party)*
- \_\_\_\_\_

**State Representative Pos. 2**

- Natalie Poulson  
*(Prefers Republican Party)*
- Patrick K. Spurlock  
*(States No Party Preference)*
- Timm Ormsby  
*(Prefers Democratic Party)*
- \_\_\_\_\_

INTENTIONALLY LEFT BLANK

**Legislative District 4 - Partisan Office**

ONLY REGISTERED VOTERS IN LEGISLATIVE DISTRICT 4 ARE ELIGIBLE TO VOTE ON THE FOLLOWING

**State Representative Pos. 1**

- Ted Cummings  
*(Prefers Democratic Party)*
- Suzanne Schmidt  
*(Prefers Republican Party)*
- MJ Bolt  
*(Prefers Republican Party)*
- \_\_\_\_\_

**State Representative Pos. 2**

- Leonard Christian  
*(Prefers Republican Party)*
- Rob Chase  
*(Prefers Republican Party)*
- \_\_\_\_\_

**Legislative District 6 - Partisan Office**

ONLY REGISTERED VOTERS IN LEGISLATIVE DISTRICT 6 ARE ELIGIBLE TO VOTE ON THE FOLLOWING

**State Senator**

- Jeff Holy  
*(Prefers Republican Party)*
- \_\_\_\_\_

**State Representative Pos. 1**

- Mike Volz  
*(Prefers Republican Party)*
- \_\_\_\_\_

**State Representative Pos. 2**

- Michaela Kelso  
*(Prefers Democratic Party)*
- Jenny Graham  
*(Prefers Republican Party)*
- \_\_\_\_\_

INTENTIONALLY LEFT BLANK

**Legislative District 7 -  
Partisan Office**

ONLY REGISTERED VOTERS IN  
**LEGISLATIVE DISTRICT 7**  
ARE ELIGIBLE TO VOTE ON THE  
FOLLOWING

**State Senator**

- Shelly Short  
*(Prefers Republican Party)*
- \_\_\_\_\_

**State Representative Pos. 1**

- Lonny Ray Williams  
*(Prefers Republican Party)*
- Jacquelin Maycumber  
*(Prefers Republican Party)*
- \_\_\_\_\_

**State Representative Pos. 2**

- Joel Kretz  
*(Prefers Republican Party)*
- \_\_\_\_\_

**Legislative District 9 -  
Partisan Office**

ONLY REGISTERED VOTERS IN  
**LEGISLATIVE DISTRICT 9**  
ARE ELIGIBLE TO VOTE ON THE  
FOLLOWING

**State Representative Pos. 1**

- Mary Dye  
*(Prefers Republican Party)*
- \_\_\_\_\_

**State Representative Pos. 2**

- Joe Schmick  
*(Prefers GOP Party)*
- \_\_\_\_\_

**Spokane County - Partisan  
Office**

ONLY REGISTERED VOTERS IN  
**COUNTY COMMISSIONER DISTRICT  
NO. 1**  
ARE ELIGIBLE TO VOTE ON THE  
FOLLOWING

**Commissioner District 1**

- Kim Plese  
*(Prefers Republican Party)*
- Chris Jordan  
*(Prefers Democratic Party)*
- \_\_\_\_\_

ONLY REGISTERED VOTERS IN  
**COUNTY COMMISSIONER DISTRICT  
NO. 2**  
ARE ELIGIBLE TO VOTE ON THE  
FOLLOWING

**Commissioner District 2**

- Michael Cathcart  
*(Prefers Republican Party)*
- Amber Waldref  
*(Prefers Democratic Party)*
- Glen R Stockwell  
*(Prefers GOP Party)*
- Bob Apple  
*(Prefers GOP Party)*
- \_\_\_\_\_

**Spokane County - Partisan  
Office**

ONLY REGISTERED VOTERS IN  
**COUNTY COMMISSIONER DISTRICT  
NO. 3**  
ARE ELIGIBLE TO VOTE ON THE  
FOLLOWING

**Commissioner District 3**

- Wild Bill Schreiner  
*(States No Party Preference)*
- Josh Kerns  
*(Prefers Republican Party)*
- \_\_\_\_\_

ONLY REGISTERED VOTERS IN  
**COUNTY COMMISSIONER DISTRICT  
NO. 4**  
ARE ELIGIBLE TO VOTE ON THE  
FOLLOWING

**Commissioner District 4**

- Chris McIntosh  
*(Prefers Republican Party)*
- Paul Brian Noble  
*(Prefers Republican Party)*
- Mary Kunej  
*(Prefers Republican Party)*
- \_\_\_\_\_

ONLY REGISTERED VOTERS IN  
**COUNTY COMMISSIONER DISTRICT  
NO. 5**  
ARE ELIGIBLE TO VOTE ON THE  
FOLLOWING

**Commissioner District 5**

- Al French  
*(Prefers Republican Party)*
- Maggie Yates  
*(Prefers Democratic Party)*
- Don A Harmon  
*(Prefers Republican Party)*
- Tara Carter  
*(Prefers Independent Party)*
- \_\_\_\_\_

**Spokane County - Partisan Office**

**Assessor**

- Tom Konis  
*(Prefers Republican Party)*
- \_\_\_\_\_

**Auditor**

- Bob McCaslin  
*(Prefers Republican Party)*
- Vicky M Dalton  
*(Prefers Democratic Party)*
- \_\_\_\_\_

**Clerk**

- Tim Fitzgerald  
*(Prefers Republican Party)*
- \_\_\_\_\_

**Prosecuting Attorney**

- Deb Conklin  
*(Prefers Non-Partisan Party)*
- Stephanie Olsen  
*(Prefers Republican Party)*
- Larry Haskell  
*(Prefers Republican Party)*
- Stefanie Collins  
*(Prefers Republican Party)*
- \_\_\_\_\_

**Spokane County - Partisan Office**

**Sheriff**

- John Nowels  
*(Prefers Republican Party)*
- Michael Zollars  
*(Prefers Republican Party)*
- Wade Nelson  
*(Prefers Republican Party)*
- \_\_\_\_\_

**Treasurer**

- Michael Baumgartner  
*(Prefers Republican Party)*
- \_\_\_\_\_

**Spokane Valley Fire Department**

ONLY REGISTERED VOTERS IN  
**SPOKANE VALLEY FIRE** ARE ELIGIBLE  
TO VOTE ON THE FOLLOWING

Proposition No. 1  
Spokane Valley Fire Department  
Proposition Restoring Property Tax Levy  
for Fire Protection and Emergency  
Medical Services

The Board of Commissioners of Spokane  
Valley Fire Department adopted  
Resolution No. 2022-513 concerning a  
proposition to maintain and adequately  
fund District operations.

This proposition authorizes the District to  
restore its regular property tax levy to  
\$1.50 per \$1,000 of assessed value in 2022  
(collected in 2023) and authorizes  
adjustments by the greater of 1 % or the  
CPI referenced in Resolution 2022-513 for  
the five succeeding years not to exceed  
6% per year. The maximum allowable levy  
in 2027 for collection in 2028 shall serve as  
the base for subsequent levy limitations  
consistent with chapter 84.55 RCW.

Should this Proposition be:

- Approved
- Rejected

**Spokane County Fire  
Protection District No. 3**

ONLY REGISTERED VOTERS IN **FIRE  
DISTRICT NO. 3** ARE ELIGIBLE TO  
VOTE ON THE FOLLOWING

Proposition No. 1  
Spokane County Fire Protection District  
No. 3  
Emergency Medical Services Property Tax  
Levy

The Board of Fire Commissioners of  
Spokane County Fire Protection District  
No. 3 adopted Resolution 22-2 concerning  
a proposition to fund emergency medical  
services.

Will Spokane County Fire Protection  
District No. 3 be authorized to fund  
emergency medical services for its citizens  
by imposing a regular property tax levy of  
\$.50 or less per \$1,000.00 of assessed  
valuation for a period of six consecutive  
years to be collected beginning in 2023?

- Yes
- No

**Spokane County Fire Protection District No. 4**

**ONLY REGISTERED VOTERS IN FIRE DISTRICT NO. 4 ARE ELIGIBLE TO VOTE ON THE FOLLOWING**

Proposition No. 1  
Spokane County Fire Protection District No. 4  
Renewal of Emergency Medical Services Property Tax Levy

The Board of Commissioners of Spokane County Fire Protection District No. 4 adopted Resolution 22-03 concerning a proposition to renew its six-year Emergency Medical Services property tax levy.

Will Spokane County Fire Protection District No. 4 be authorized to continue to fund emergency medical services for its citizens by renewing a regular property tax levy of \$.50 or less per \$1,000.00 of assessed valuation (last approved by the voters in 2016) for a period of six consecutive years to be collected beginning in 2023?

- Yes
- No

INTENTIONALLY LEFT BLANK

**Spokane County Fire Protection District No. 13**

**ONLY REGISTERED VOTERS IN FIRE DISTRICT NO. 13 ARE ELIGIBLE TO VOTE ON THE FOLLOWING**

Proposition No. 1  
Spokane County Fire Protection District No. 13  
Property Tax Levy for Fire Protection and Emergency Medical Services

The Board of Spokane County Fire Protection District No. 13 adopted Resolution No. 2022-3 concerning a proposition to maintain and adequately fund District operations.

This proposition authorizes the District to maintain and/or improve service levels by restoring its regular property tax levy to \$1.50 per \$1,000 of assessed value to be collected in 2023 and authorizing adjustments of six percent or less, subject to otherwise applicable statutory limits, for each of the five succeeding years. The maximum allowable levy in the final year, shall serve as the base for subsequent levy limitations as provided by chapter 84.55 RCW.

Should this proposition be:

- Approved
- Rejected

INTENTIONALLY LEFT BLANK

**Precinct Committee Officer**

For this office only: In order to vote for precinct committee officer, a partisan office, you must affirm that you are a Democrat or a Republican and may vote only for one candidate from the party you select. Your vote for a candidate affirms your affiliation with the same party as the candidate. This preference is private and will not be matched to your name or shared.

**Election of Political Party Precinct Committee Officer**

- I affirm I am a Democrat
- I affirm I am a Republican

INTENTIONALLY LEFT BLANK

**August 2, 2022 Primary Information**

If you have changed your residence address, you may update your address and receive an updated ballot by visiting [VoteWA.gov](http://VoteWA.gov) or contacting our office until Monday, July 25, 2022.

Beginning on Tuesday, July 26, 2022, you may update your registration in person and receive an updated ballot at a Voter Service Center.

**Contact Information**

Spokane County Elections  
Online: [www.spokanecounty.org/elections](http://www.spokanecounty.org/elections)  
Email: [elections@spokanecounty.org](mailto:elections@spokanecounty.org)  
Phone: 509-477-2320

**Ballot Drop Box Locations**

Ballot Drop Boxes are available starting July 14, 2022 and close promptly at 8:00 p.m. on election day - August 2, 2022:

- Airway Heights Library - 1213 S Lundstrom St
- Argonne Library - 4322 N Argonne Rd
- CenterPlace - 2426 N Discovery Pl
- Central Library - 906 W Main Ave
- Cheney Library - 610 First St
- Deer Park Library - 208 S Forest Ave
- Elections Office - 1033 W Gardner Ave
- Fairfield Library - 305 E Main St
- Hillyard Library - 4110 N Cook St
- Latah Town Hall - 108 Market St
- Liberty Lake Library - 23123 E Mission Ave
- Liberty Park Library - 402 S Pittsburg St
- Medical Lake Library - 321 E Herb St
- Millwood City Hall - 9103 E Frederick Ave
- Moran Prairie Library - 6004 S Regal St
- North Spokane Library - 44 E Hawthorne Rd
- Otis Orchards Library - 22324 E Wellesley Ave
- Rockford Town Hall - 20 W Emma St
- Shadle Park Library - 2111 W Wellesley Ave
- Spangle Town Hall - 115 W 2nd St
- Spokane Valley Library - 12004 E Main Ave
- STA Plaza - 701 W Riverside Ave
- The Hive - 2904 E Sprague Ave
- Waverly Town Hall - 225 N Commercial St

Locations may also be found at [www.spokanecounty.org/elections](http://www.spokanecounty.org/elections) or [VoteWA.gov](http://VoteWA.gov).

**Voter Service Centers**

Voters may register to vote, drop off ballots, get replacement ballots, use an Accessible Voting Unit, or receive other assistance as needed at:

- Downtown Spokane**
  - Elections Office - 1033 W Gardner Ave
  - Monday - Friday: 8:30 a.m. to 4:00 p.m.
  - August 1st, Monday: 8:30 a.m. to 4:00 p.m.
  - Election Day August 2nd: 7:00 a.m. to 8:00 p.m.
- Spokane Valley**
  - CenterPlace - 2426 N Discovery Pl
  - August 1st, Monday: 8:30 a.m. to 4:00 p.m.
  - Election Day August 2nd: 7:00 a.m. to 8:00 p.m.

In order for your ballot to be counted, it must be either postmarked no later than election day or deposited at a ballot drop box no later than 8:00 p.m. on election day. If depositing your ballot in a US Postal Service box, Postage is Prepaid - no postage is required.