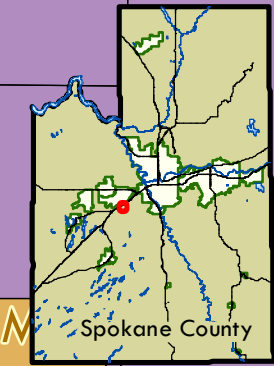


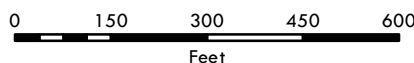
LI to LDR on approx. 10.92 acres



Proposed Comp Plan Amendment	Residential	NC	Industrial	UR
LDR-P	CC	LI	RAC	
LDR	RC	HI	Resource Lands	
MDR	Mixed Use	RT	LTA	
HDR	MU	R-5	STA	
LDAC		RCV	FZ	
			MZ	

2022 Comp Plan Amendment Requests
22-CPAIR-09

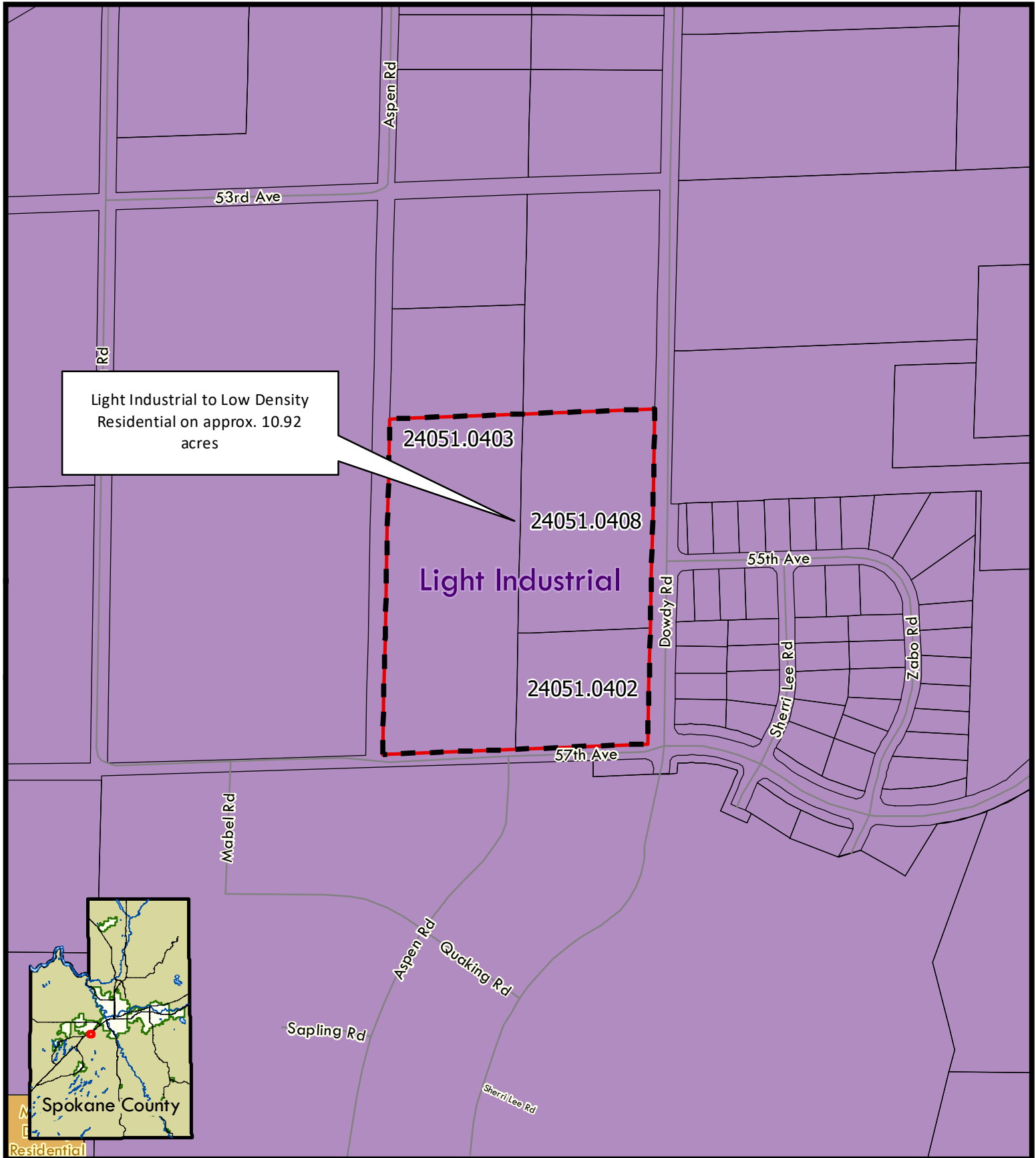
Zoning Map



1 inch = 300 feet
State Plane WA North

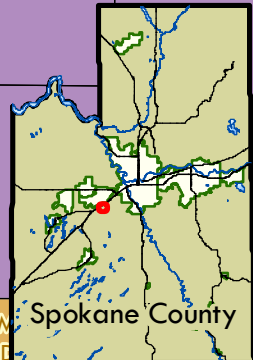
This map was published by the Spokane County Department of Building and Planning as a general planning tool. Due to the differing quality of source documents, the Department cannot accept responsibility for errors or omissions, and therefore, there are no warranties which accompany this material.

Map produced: February 2022
Spokane County GIS



Light Industrial to Low Density Residential on approx. 10.92 acres

24051.0403
24051.0408
Light Industrial
24051.0402
57th Ave



Proposed Comp Plan Amendment	UGA	R-5	LDR	Mixed Use
Resource Lands	RC	MDR	MU	
LTA	UR	HDR	CAC	
STA	RAC	Commercial	UAC	
FZ	LDAR	NC	Industrial	
MZ	LDAC	CC	LI	
Rural	Residential	RC	HI	
RT	LDR+			

**2022 Comp Plan Amendment Requests
22-CPAIR-09**

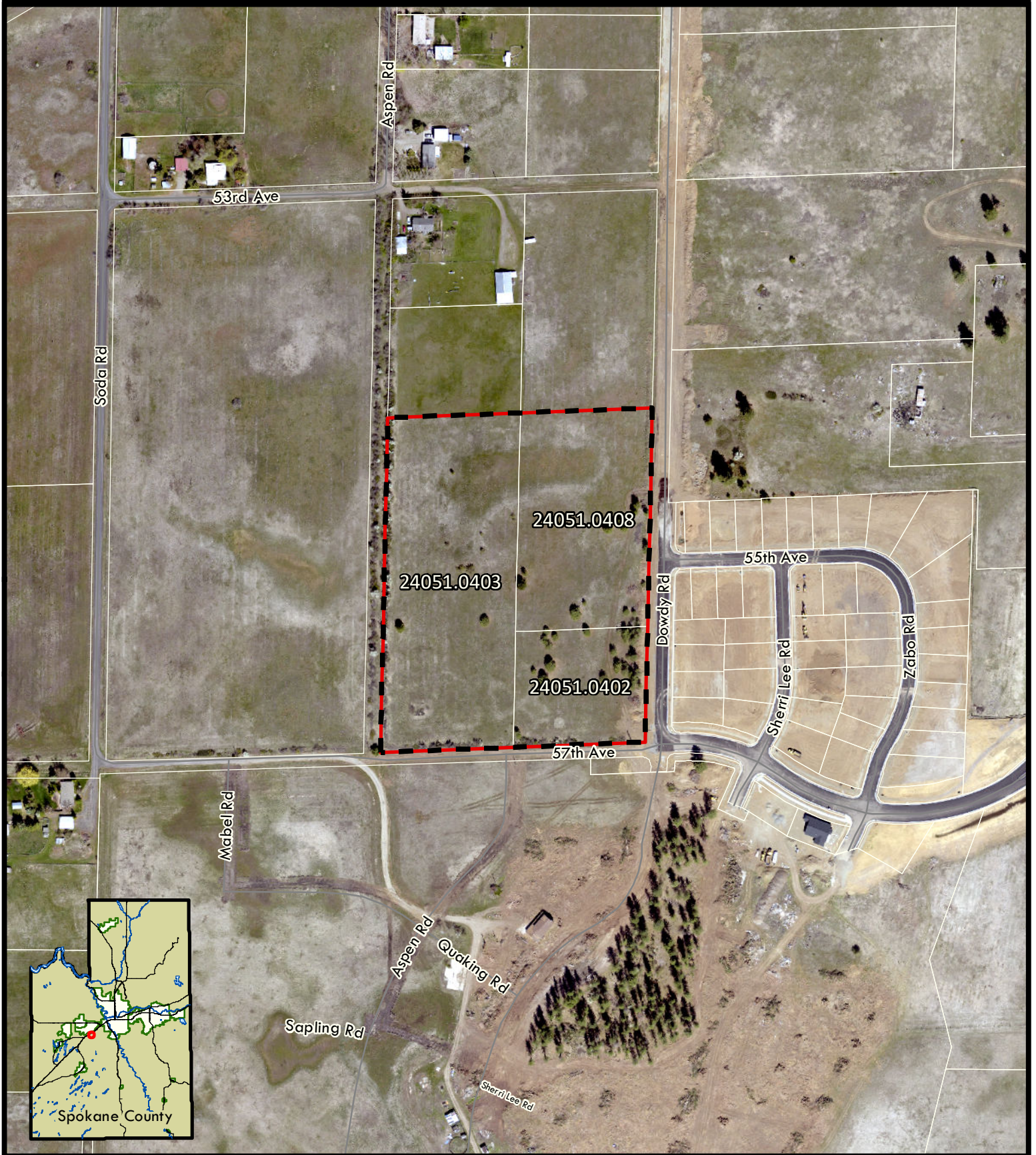
Comprehensive Plan Map

0 75 150 300 450 600 Feet

1 inch = 300 feet
State Plane WA North

This map was published by the Spokane County Department of Building and Planning as a general planning tool. Due to the differing quality of source documents, the Department cannot accept responsibility for errors or omissions, and therefore, there are no warranties which accompany this material.

Map produced: February 2022
Spokane County GIS

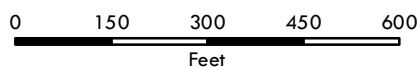


Legend
 Proposed Comp Plan Amendment

**2022 Comp Plan Amendment Requests
 22-CPAIR-09**

Aerial Map

2020 Imagery



1 inch = 300 feet
 State Plane WA North

This map was published by the Spokane County Department of Building and Planning as a general planning tool. Due to the differing quality of source documents, the Department cannot accept responsibility for errors or omissions, and therefore, there are no warranties which accompany this material.

Map produced: February 2022
 Spokane County GIS