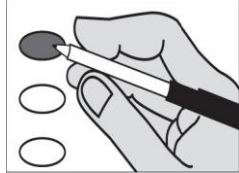


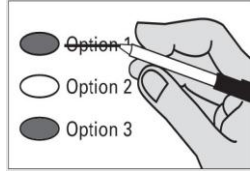
Sample Ballot
Spokane County Washington
February 14, 2012 Special Election

Instructions
 Marking Your Ballot



Completely fill in the oval to the left of your choice. Use a dark pen. Do not use pencil.

Unless specifically allowed by law, more than one vote for a ballot measure will be an over vote and no votes for that office or ballot measure will be counted.



If you make a correction, draw a line through the entire response. You then have the option of making another choice if you wish.

In order for your ballot to be counted, it must be either postmarked or deposited at a designated deposit site no later than 8:00 P.M on Election Day. A list of deposit sites may be found at www.spokanecounty.org/elections.

Proposition No. 1
 Tekoa School District No. 80-265
 Replacement Maintenance and Operation Levy

Shall Tekoa School District No. 265 levy the following excess taxes, in place of an expiring levy, upon all taxable property within the District, for support of the District's General Fund educational maintenance and operational expenses:

<u>Collection Years</u>	<u>Approximate Levy Rate/\$1,000 Assessed Value</u>	<u>Levy Amount</u>
2013	\$5.16	\$290,000
2014	\$5.16	\$290,000

Levy Yes
 Levy No

Proposition No. 1
 Spokane School District No. 81
 Replacement Educational Programs and Operations Levy

The Board of Directors of Spokane School District No. 81 adopted Resolution No. 2011-20, concerning a proposition to support educational programs and operation expenses. This proposition would authorize the District to levy the following excess taxes, in place of an expiring levy, upon all taxable property within the District, for support of the District's General Fund educational programs and operation expenses:

<u>Levy Year</u>	<u>Collection Year</u>	<u>Approximate Levy Rate/\$1,000 Assessed Value</u>	<u>Levy Amount</u>
2012	2013	\$4.49	\$71,500,000
2013	2014	\$4.46	\$72,500,000
2014	2015	\$4.44	\$73,500,000

all as provided in Resolution No. 2011-20. Should this proposition be approved?

Levy Yes
 Levy No

Proposition No. 1
 Great Northern School District No. 312
 Two-Year Maintenance and Operation Levy

The Board of Directors of Great Northern School District No. 312 adopted Resolution No. 2011-05, concerning this proposition to finance maintenance and operations expenses. The proposition would authorize the District to levy the following excess taxes upon all taxable property within the District for support of the District's educational maintenance and operation expenses:

<u>Collection Year</u>	<u>Approximate Levy Rate/\$1,000 Assessed Value</u>	<u>Levy Amount</u>
2013	\$1.9579	\$163,500
2014	\$1.9579	\$163,500

all as provided in Resolution No. 2011-05. Should this proposition be approved?

Levy Yes
 Levy No

Proposition No. 1
 Nine Mile Falls School District No. 325-179
 Replacement of Expiring Educational Programs, Maintenance and Operations Levy

The Board of Directors of Nine Mile Falls School District No. 325-179 adopted Resolution No. 14-11, concerning a proposition to finance educational programs, maintenance and operations expenses. This proposition would authorize the District to levy the following excess taxes, in place of an expiring levy, on all taxable property within the District, for support of the District's educational programs, maintenance and operations expenses:

<u>Collection Year</u>	<u>Approximate Levy Rate/\$1,000 Assessed Value</u>	<u>Levy Amount</u>
2013	\$3.43	\$2,780,000
2014	\$3.43	\$2,820,000
2015	\$3.43	\$2,880,000

all as provided in Resolution No. 14-11. Should this proposition be approved?

Levy Yes
 Levy No

Proposition No. 1
 Medical Lake School District No. 326
 Replacement Maintenance and Operation Levy

The Board of Directors of Medical Lake School District No. 326 adopted Resolution No. 11-12.02, concerning a proposition to finance maintenance and operation expenses. This proposition would authorize the District to meet the educational needs of its students by levying the following excess taxes, in place of an expiring levy, on all taxable property within the District, for support of the District's General Fund maintenance and operation expenses:

<u>Collection Year</u>	<u>Approximate Levy Rate/\$1,000 Assessed Value</u>	<u>Levy Amount</u>
2013	\$1.99	\$1,097,622
2014	\$1.99	\$1,130,551
2015	\$1.99	\$1,164,467

all as provided in Resolution No. 11-12.02. Should this proposition be approved?

Levy Yes
 Levy No

Proposition No. 1
 Mead School District No. 354
 Replacement Educational Programs and Operation Levy

The Board of Directors of Mead School District No. 354 adopted Resolution No. 11-12, concerning a proposition to support educational programs and operation expenses. This proposition would authorize the District to levy the following excess taxes, in place of an expiring levy, upon all taxable property within the District, for support of the District's General Fund educational programs and operation expenses:

<u>Levy Year</u>	<u>Collection Year</u>	<u>Approximate Levy Rate/\$1,000 Assessed Value</u>	<u>Levy Amount</u>
2012	2013	\$4.55	\$20,650,000
2013	2014	\$4.55	\$20,650,000
2014	2015	\$4.55	\$20,650,000

all as provided in Resolution No. 11-12. Should this proposition be approved?

Levy Yes
 Levy No

Proposition No. 1
 Central Valley School District No. 356
 Replacement School Programs and Operations Levy

The Board of Directors of Central Valley School District No. 356 adopted Resolution No. 11-10, concerning a proposition to support school programs and operation expenses. This proposition would authorize the District to levy the following excess taxes, in place of an expiring levy, upon all taxable property within the District, for support of the District's General Fund school programs and operation expenses:

<u>Levy Year</u>	<u>Collection Year</u>	<u>Approximate Levy Rate/\$1,000 Assessed Value</u>	<u>Levy Amount</u>
2012	2013	\$4.19	\$27,100,000
2013	2014	\$4.19	\$27,100,000
2014	2015	\$4.19	\$27,100,000

all as provided in Resolution No. 11-10. Should this proposition be approved?

Levy Yes
 Levy No

Proposition No. 1
 Freeman School District No. 358
 Replacement Educational Programs and Operation Levy

The Board of Directors of Freeman School District No. 358 adopted Resolution No. 5-2011/2012, concerning a proposition to support educational programs and operation expenses. This proposition would authorize the District to levy the following excess taxes, in place of an expiring levy, upon all taxable property within the District, for support of the District's General Fund educational programs and operation expenses:

<u>Levy Year</u>	<u>Collection Year</u>	<u>Approximate Levy Rate/\$1,000 Assessed Value</u>	<u>Levy Amount</u>
2012	2013	\$2.93	\$1,470,000
2013	2014	\$2.93	\$1,484,291
2014	2015	\$2.93	\$1,499,132

all as provided in Resolution No. 5-2011/2012. Should this proposition be approved?

Levy Yes
 Levy No

Proposition No. 1
 Cheney School District No. 360
 Replacement Educational Programs and Operation Levy

The Board of Directors of Cheney School District No. 360 adopted Resolution No. 7-11-12, concerning a proposition to support educational programs and operation expenses. This proposition would authorize the District to levy the following excess taxes, in place of an expiring levy, upon all taxable property within the District, for support of the District's General Fund educational programs and operation expenses:

<u>Levy Year</u>	<u>Collection Year</u>	<u>Approximate Levy Rate/\$1,000 Assessed Value</u>	<u>Levy Amount</u>
2012	2013	\$3.19	\$8,500,000
2013	2014	\$3.19	\$8,800,000
2014	2015	\$3.19	\$9,100,000

all as provided in Resolution No. 7-11-12. Should this proposition be approved?

Levy Yes
 Levy No

Proposition No. 1
 East Valley School District No. 361
 Replacement of Expiring Maintenance and Operation Levy

The Board of Directors of East Valley School District No. 361 adopted Resolution No. 2705, concerning a proposition to finance maintenance and operation expenses. This proposition would authorize the District to levy the following excess taxes, in place of an expiring levy, upon all taxable property within the District, for support of the District's maintenance and operation expenses:

<u>Collection Year</u>	<u>Approximate Levy Rate/\$1,000 Assessed Value</u>	<u>Levy Amount</u>
2013	\$4.44	\$10,976,643
2014	\$4.44	\$11,305,941
2015	\$4.44	\$11,645,119
2016	\$4.44	\$11,994,473

all as provided in Resolution No. 2705. Should this proposition be approved?

- Levy Yes
 Levy No

Proposition No. 1
 Liberty School District No. 362
 Replacement Maintenance and Operation Levy

The Board of Directors of Liberty School District No. 362 adopted Resolution No. 11-12/02, concerning a proposition to finance maintenance and operation expenses. This proposition would authorize the District to meet the educational needs of its students by levying the following excess taxes, in place of an expiring levy, on all taxable property within the District, for support of the District's General Fund maintenance and operation expenses:

<u>Collection Year</u>	<u>Approximate Levy Rate/\$1,000 Assessed Value</u>	<u>Levy Amount</u>
2013	\$2.95	\$1,430,000
2014	\$2.95	\$1,460,000
2015	\$2.95	\$1,520,000

all as provided in Resolution No. 11-12/02. Should this proposition be approved?

- Levy Yes
 Levy No

Proposition No. 2
 Liberty School District No. 362
 Replacement Capital Levy for Educational Technology Improvements

The Board of Directors of Liberty School District No. 362 adopted Resolution No. 11-12/03, concerning a proposition to finance educational technology improvements. This proposition would authorize the District to acquire and install educational technology equipment (including classroom computers) throughout existing school facilities to improve student learning and make other technology improvements, and levy the following excess taxes, in place of an expiring levy, on all taxable property within the District:

<u>Collection Year</u>	<u>Approximate Levy Rate/\$1,000 Assessed Value</u>	<u>Levy Amount</u>
2013	\$0.24	\$115,000
2014	\$0.23	\$115,000
2015	\$0.22	\$115,000

all as provided in Resolution No. 11-12/03. Should this proposition be approved?

- Levy Yes
 Levy No

Proposition No. 1
 West Valley School District No. 363
 Replacement of Expiring School Programs and Operations Levy

The Board of Directors of West Valley School District No. 363 adopted Resolution No. 11-20, concerning educational program and school support operations funding. This proposition authorizes the District to levy the following excess taxes to replace of an expiring levy, on all taxable property within the District to support of the District's educational programs and services, including teachers, staff, classroom materials and textbooks, technology, athletics, buildings and transportation:

<u>Collection Year</u>	<u>Approximate Levy Rate/\$1,000 Assessed Value</u>	<u>Levy Amount</u>
2013	\$4.69	\$7,840,000.00
2014	\$4.69	\$7,840,000.00
2015	\$4.69	\$7,840,000.00

Should this proposition be approved?

- Levy Yes
 Levy No

Proposition No. 2
 West Valley School District No. 363
 Replacement of Expiring Technology Capital Projects Levy

The Board of Directors of West Valley School District No. 363 adopted Resolution No. 11-21 concerning this proposition for a technology capital projects levy. The proposition would authorize modernization and upgrades of District technology and computer systems for instruction and operations, and other capital project expenditures; and authorizes the following taxes in excess of regular property tax levies, upon all taxable property within the District:

<u>Collection Year</u>	<u>Approximate Levy Rate/\$1,000 Assessed Value</u>	<u>Levy Amount</u>
2013	\$0.30	\$500,000.00
2014	\$0.30	\$500,000.00
2015	\$0.30	\$500,000.00

Should this proposition be approved?

- Levy Yes
 Levy No

Proposition No. 1
 St John School District No. 401-322
 Replacement Maintenance and Operation Levy

Shall St John School District No. 322 levy the following excess taxes, in place of an expiring levy, upon all taxable property within the District, for support of the District's General Fund educational maintenance and operational expenses:

<u>Collection Years</u>	<u>Approximate Levy Rate/\$1,000 Assessed Value</u>	<u>Levy Amount</u>
2013	\$2.32	\$380,000.00
2014	\$2.32	\$380,000.00

- Levy Yes
 Levy No

Proposition No. 1
 Rosalia School District No. 320
 Replacement Maintenance and Operation Levy

The Board of Directors of Rosalia School District No. 320, adopted Resolution No. 2011-15, concerning a proposition to finance maintenance and operation expenses. This proposition would authorize the District to levy the following excess taxes, in place of an expiring levy, upon all taxable property within the District, for support of the District's General Fund educational maintenance and operation expenses:

<u>Collection Years</u>	<u>Approximate Levy Rate/\$1,000 Assessed Value</u>	<u>Levy Amount</u>
2013	\$4.98	\$520,000.00
2014	\$4.98	\$520,000.00

all as provided in Resolution No. 2011-15. Should this proposition be approved?

- Levy Yes
 Levy No

Proposition No. 1
 Deer Park School District No. 414-200-61
 Maintenance and Operation Replacement Levy

The Board of Directors of Deer Park School District No. 414-200-61 adopted Resolution No. 3-2011-12, concerning a proposition to finance maintenance and operation expenses. This proposition would authorize the District to meet the educational needs of its students by levying the following excess taxes, in place of an expiring levy, on all taxable property within the District, for support of the District's General Fund educational maintenance and operation expenses:

<u>Collection Year</u>	<u>Approximate Levy Rate/\$1,000 Assessed Value</u>	<u>Levy Amount</u>
2013	\$2.59	\$1,962,665
2014	\$2.59	\$2,001,915
2015	\$2.59	\$2,041,953

all as provided in Resolution No. 3-2011-12. Should this proposition be approved?

- Levy Yes
 Levy No

Proposition No. 1
 Riverside School District No. 416-62
 Replacement Educational Programs and Operation Levy

The Board of Directors of Riverside School District No. 416-62 adopted Resolution No. 12-11-12, concerning a proposition to support educational programs and operation expenses. This proposition would authorize the District to levy the following excess taxes, in place of an expiring levy, upon all taxable property within the District, for support of the District's General Fund educational programs and operation expenses:

<u>Levy Year</u>	<u>Collection Year</u>	<u>Approximate Levy Rate/\$1,000 Assessed Value</u>	<u>Levy Amount</u>
2012	2013	\$3.91	\$3,270,000
2013	2014	\$4.09	\$3,460,000
2014	2015	\$4.34	\$3,700,000

all as provided in Resolution No. 12-11-12. Should this proposition be approved?

- Levy Yes
 Levy No

Proposition No. 2
 Riverside School District No. 416-62
 Facilities and Technology Capital Levy

The Board of Directors of Riverside School District No. 416-62 adopted Resolution No. 12-11-13, concerning a proposition to acquire District technology and capital improvements. This proposition would authorize the District to levy the following excess taxes upon the taxable property within the District for support of the District's Capital Projects Fund for technology improvements and capital improvements to the District's educational facilities:

<u>Levy Year</u>	<u>Collection Year</u>	<u>Approximate Levy Rate/\$1,000 Assessed Value</u>	<u>Levy Amount</u>
2012	2013	\$1.46	\$1,218,750
2013	2014	\$1.44	\$1,218,750
2014	2015	\$1.43	\$1,218,750
2015	2016	\$1.41	\$1,218,750

all as provided in Resolution No. 12-11-13. Should this proposition be approved?

- Levy Yes
 Levy No