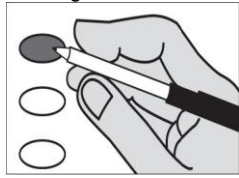


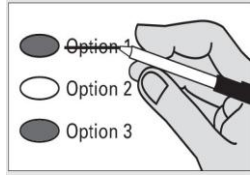
**Sample Ballot
Spokane County Washington
February 11, 2014 Special Election**

Instructions
Marking Your Ballot



Completely fill in the oval to the left of your choice. Use a dark pen.

Unless specifically allowed by law, more than one vote for a ballot measure will be an over vote and no votes for that ballot measure will be counted.



If you make a correction, draw a line through the entire response. You then have the option of making another choice if you wish.

In order for your ballot to be counted, it must be either postmarked or deposited at a designated deposit site no later than 8:00 P.M on Election Day(February 11). A list of deposit sites may be found at www.spokanecounty.org/elections.

**Proposition No. 1
Tekoa School District No. 265
Replacement Maintenance and Operation Levy**

Shall the Tekoa School District No. 265 levy the following excess taxes, in place of an expiring levy, upon all taxable property within the District, for support of the District's General Fund educational maintenance and operational expenses?

Collection Years	Approximate Levy Rate/\$1,000 Assessed Value	Levy Amount
2015	\$4.79	\$335,000
2016	\$4.79	\$335,000

Levy Yes
 Levy No

**Proposition No. 1
Great Northern School District #312
Two-Year Maintenance and Operation Levy**

The Board of Directors of Great Northern School District #312 adopted Resolution No. 2013-14-12, concerning a proposition to finance maintenance and operation expenses. This proposition would authorize the District to levy the following excess taxes upon all taxable property within the District for support of the District's educational maintenance and operation expenses:

Collection Years	Approximate Levy Rate/\$1,000 of Assessed Value	Levy Amount
2015	\$2.10	\$189,000
2016	\$2.10	\$189,000

all as provided in Resolution No. 2013-14-12. Should this proposition be approved?

Levy Yes
 Levy No

**Proposition No. 1
Rosalia School District No. 320
Replacement Maintenance and Operation Levy**

The Board of Directors of Rosalia School District No. 320, adopted Resolution No. 2013-14, concerning a proposition to finance maintenance and operation expenses. This proposition would authorize the District to levy the following excess taxes, in place of an expiring levy, upon all taxable property within the District, for support of the District's General Fund educational maintenance and operation expenses:

Collection Years	Approximate Levy Rate/\$1,000 Assessed Value	Levy Amount
2015	\$3.22	\$575,000.00
2016	\$3.30	\$595,000.00

all as provided in Resolution No. 2013-14. Should this proposition be approved?

Levy Yes
 Levy No

**Proposition No. 1
Reardan-Edwall School District No. 9
Bonds to Renovate School Facilities**

The Board of Directors of Reardan-Edwall School District No. 9 adopted Resolution No. 03-2013/14 concerning a proposition to renovate school facilities. This proposition would authorize the District to renovate Reardan Elementary School (including constructing classrooms, computer and science rooms, kitchen/multipurpose addition and new roof; and upgrading electrical and HVAC systems), renovate Smith Gym (including upgrading plumbing, electrical and HVAC systems and making ADA improvements), and reconfigure bus loading zones; issue no more than \$8,405,000 of general obligation bonds maturing within 30 years; and levy annual excess taxes to repay the bonds, as provided in Resolution No. 03-2013/14. Should this proposition be:

Approved
 Rejected

**Proposition No. 1
St. John School District No. 322-JT 401
Replacement Maintenance and Operation Levy**

The Board of Directors of St. John School District No. 322-JT 401 adopted Resolution No. 13-05, concerning a proposition to finance maintenance and operation expenses. This proposition would authorize the District to meet the educational needs of its students by levying the following excess taxes, in place of an expiring levy, on all taxable property within the District, for essential maintenance and operation expenses not funded by the State of Washington, including educational programs, student services and operations:

Collection Year	Approximate Levy Rate/\$1,000 Assessed Value	Levy Amount
2015	\$2.31	\$430,000
2016	\$2.31	\$430,000

all as provided in Resolution No. 13-05. Should this proposition be approved?

Levy Yes
 Levy No

**Proposition No. 1
Newport Consolidated Joint School District No. 56-415
Replacement of Expiring Educational Programs and Operation Levy**

The Board of Directors of Newport Consolidated Joint School District No. 56-415 adopted Resolution No. 1-2013-2014, concerning a proposition to maintain current educational programs and operation. The proposition would authorize the District to levy the following excess taxes, in place of an expiring levy, on all taxable property within the District, for support of the District's General Fund educational programs and operation expenses:

Amount for Collection	Year of Collection	Est. Cost/Thousand
\$1,606,851.00	2015	2.0601
\$1,655,056.00	2016	2.0601
\$1,704,708.00	2017	2.0601

as provided in Resolution No. 1-2013-2014. Should this proposition be approved?

Levy Yes
 Levy No

Voter Service Centers will be open on Election Day (February 11, 2014) only from 7:00 am to 8:00 pm.

Voters may drop off ballots; get replacement ballots; use an Accessible Voting Unit, or receive other assistance as needed on Election Day.

Downtown Spokane - Elections Office - 1033 W Gardner Ave

Ballot Drop Box locations are available 20 days prior to Election Day
*Airway Heights Library 1213 S Lundstrom St
*Elections Office -1033 W Gardner Ave

If depositing your ballot in a US Postal Service box, you must include first class postage (\$0.49).

The Spokane County Elections Office is open weekdays from 8:30 a.m. to 4:00 p.m. Voters may drop off ballots; get replacement ballots; use an Accessible Voting Unit, or receive other assistance as needed.

For more information please visit our website at www.spokanecounty.org/elections; call our office at 509-477-2320 or email us at elections@spokanecounty.org.

For a list of the people and organizations that donated to state and local candidates and ballot measure campaigns, visit www.pdc.wa.gov.