

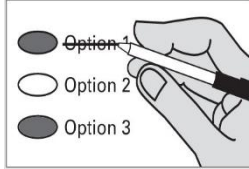
Instructions

Marking Your Ballot



Completely fill in the oval to the left of your choice. Use a dark pen. Unless specifically allowed by law, more than one vote for a ballot measure will be an over vote and no votes for that office or ballot measure will be counted.

Correcting Your Ballot



If you make a correction, draw a line through the entire response. You then have the option of making another choice if you wish.

In order for your ballot to be counted, it must be either postmarked or deposited at a designated deposit site no later than 8:00 p.m. on Election Day (February 9, 2016). A list of deposit sites may be found at www.spokanecounty.org/elections.

Proposition No. 1
 Tekoa School District No. 265
 Replacement Maintenance and Operation Levy

Shall the Tekoa School District No. 265 levy the following excess taxes, in place of an expiring levy, upon all taxable property within the District, for support of the District's General Fund educational maintenance and operational expenses?

<u>Collection Years</u>	<u>Approximate Levy Rate/\$1,000 Assessed Value</u>	<u>Levy Amount</u>
2017	\$4.83	\$365,000
2018	\$4.88	\$365,000

Levy Yes

Levy No

Proposition No. 1
 Orchard Prairie School District No. 123
 Bonds to Renovate Orchard Prairie School

The Board of Directors of Orchard Prairie School District No. 123 adopted Resolution No. 15-04, concerning a proposition to finance renovation of Orchard Prairie School. This proposition would authorize the District to renovate Orchard Prairie School (including constructing a new multipurpose building for District and community use, and modernizing and reconfiguring the 1970s building); issue no more than \$1,489,000 of general obligation bonds maturing within 20 years; and levy annual excess property taxes to repay the bonds, all as provided in Resolution No. 15-04. Should this proposition be:

Approved

Rejected

Proposition No. 1
 Great Northern School District No. 312
 Two-Year Maintenance and Operation Levy

The Board of Directors of Great Northern School District No. 312 adopted Resolution No. 2015-11-01, concerning a proposition to finance maintenance and operation expenses. This proposition would authorize the District to levy the following excess taxes upon all taxable property within the District for support of the District's educational maintenance and operation expenses:

<u>Collection Year</u>	<u>Approximate Levy Rate/\$1,000 Assessed Value</u>	<u>Levy Amount</u>
2017	\$2.05	\$200,000
2018	\$2.05	\$200,000

all as provided in Resolution No. 2015-11-01. Should this proposition be approved?

Levy Yes

Levy No

Proposition No. 1
 East Valley School District No. 361
 Replacement of Expiring Maintenance and Operation Levy

The Board of Directors of East Valley School District No. 361 adopted Resolution No. 2746, concerning a proposition a proposition to finance maintenance and operation expenses. This proposition would authorize the District to levy the following excess taxes, in place of an expiring levy, upon all taxable property within the District, for support of the District's maintenance and operation expenses:

<u>Collection Year</u>	<u>Approximate Levy Rate/\$1,000 Assessed Value</u>	<u>Levy Amount</u>
2017	\$4.40	\$12,400,000
2018	\$4.40	\$12,700,000
2019	\$4.40	\$13,000,000
2020	\$4.40	\$13,400,000

All as provided in Resolution No. 2746. Should this proposition be approved?

Levy Yes

Levy No

Proposition No. 1
Liberty School District No. 362
Bonds to Renovate, Improve and Construct School Facilities

The Board of Directors of Liberty School District No. 362 adopted Resolution No. 15-16/01, concerning a proposition to improve student safety, infrastructure and educational opportunities. This proposition would authorize the District to: make District-wide student safety and security improvements, renovate the 1960 portion of Liberty High School, construct a gymnasium and commons area at Liberty High School, and renovate Liberty Elementary/Junior High School; issue no more than \$12,200,000 of general obligation bonds maturing within 20 years; and levy annual excess property taxes to repay the bonds, all as provided in Resolution No. 15-16/01. Should this proposition be:

Approved

Rejected

Proposition No. 1
St. John School District No. 322- JT 401
Replacement Maintenance and Operation Levy

Shall the St. John School District No. 322 levy the following excess taxes, in place of an expiring levy, upon all taxable property within the District, for support of the District's General Fund educational maintenance and operational expenses?

<u>Collection Year</u>	<u>Approximate Levy Rate/\$1,000 Assessed Value</u>	<u>Levy Amount</u>
2017	\$2.4165	\$480,000
2018	\$2.4165	\$480,000

Levy Yes

Levy No

Proposition No. 2
St. John School District No. 322- JT 401
Capital Levy for Technology, Safety and Security Improvements

The Board of Directors of St. John School District No. 322 adopted Resolution No. 15-05, concerning a proposition to finance technology, safety and security improvements. This proposition would authorize the District to levy the following excess taxes, on all taxable property within the District to make technology, safety and security improvements at St. John School (including acquiring technology equipment and infrastructure to replace computer labs, and acquiring security systems, and a communication system for use in buses):

<u>Collection Year</u>	<u>Approximate Levy Rate/\$1,000 Assessed Value</u>	<u>Levy Amount</u>
2017	\$1.00	\$100,000
2018	\$1.00	\$100,000

Levy Yes

Levy No

Proposition No. 1
Rosalia School District No. 320
Replacement Maintenance and Operation Levy

The Board of Directors of Rosalia School District No. 320, adopted Resolution No. 2015-07, concerning a proposition to finance maintenance and operation expenses. This proposition would authorize the District to levy the following excess taxes, in place of an expiring levy, upon all taxable property within the District, for support of the District's General fund educational maintenance and operation expenses:

<u>Collection Year</u>	<u>Approximate Levy Rate/\$1,000 Assessed Value</u>	<u>Levy Amount</u>
2017	\$3.24	\$595,000
2018	\$3.20	\$595,000

all as provided in Resolution No. 2015.07. Should this proposition be approved?

Yes

No

Proposition No. 1
Reardan-Edwall School District No. 9
Bonds to Renovate School Facilities

The Board of Directors of Reardan-Edwall School District No. 9 adopted Resolution No. 02-2015/16 concerning a proposition to improve student safety, infrastructure and educational opportunities. This proposition would authorize the District to: renovate Reardan Elementary School (including constructing classrooms, new roof, computer and science rooms and kitchen/multipurpose addition; and upgrading electrical and HVAC systems), renovate Smith Gym, and reconfigure bus loading zones; issue no more than \$10,895,000 of general obligation bonds maturing within 25 years; and levy annual excess property taxes to repay the bonds, all as provided in Resolution No. 02-2015/16. Should this proposition be:

Approved

Rejected

Proposition No. 1
Spokane County Fire Protection District No. 9
Replacement Maintenance and Operation Levy

The Board of Commissioners of Spokane County Fire Protection District No. 9 adopted Resolution No. 15-7 concerning a proposition to meet the District's maintenance and operation needs. This proposition would authorize the District to levy the following taxes, in place of an existing levy, upon all taxable property within the District, for support of the District's Expense Fund expenditures for maintenance, operations and emergency medical services:

<u>Levy Year</u>	<u>Collection Year</u>	Approximate Levy Rate/\$1,000 <u>Assessed Value</u>	<u>Levy Amount</u>
2016	2017	\$1.80	\$7,100,000
2017	2018	\$1.80	\$7,450,000

Should this proposition be approved?

Levy Yes

Levy No

Voter Service Centers will be open on Election Day (February 9) only from 7:00 a.m. to 8:00 p.m. Voters may drop off ballots; get replacement ballots; use an Accessible Voting Unit, or receive other assistance as needed on Election Day.

Downtown Spokane - Elections Office - 1033 W Gardner Ave ; North Spokane – N. Spokane Library - 44 E Hawthorne Rd; Spokane Valley - CenterPlace - 2426 N Discovery Pl

Ballot Drop Box locations are available 20 days prior to Election Day

Airway Heights Library – 1213 S Lundstrom St; **Argonne Library** - 4322 N Argonne Rd; **Elections Office** -1033 W Gardner Ave; **Fairfield Library** – 305 E Main St; **Hillyard Library** - 4005 N Cook St;
Indian Trail Library - 4909 W Barnes Rd; **Liberty Lake Library** – 23123 E Mission Ave;
Moran Prairie Library - 6004 S Regal St; **North Spokane Library** - 44 E Hawthorne Rd;
Otis Orchards Library - 22324 E Wellesley Ave; **Shadle Library** - 2111 W Wellesley Ave; **Spokane Valley Library** - 12004 E Main Ave; **STA Plaza** - 701 W Riverside Ave

In order for your ballot to be counted, it must be either postmarked or deposited at a designated deposit site no later than 8:00 p.m. on Election Day (February 9, 2016). If depositing your ballot in a US Postal Service box, you must include first class postage (\$0.49). **The Elections Office is open from 8:30 a.m. to 4:00 p.m. weekdays** to answer questions; get replacement ballots; use an Accessible Voting Unit, or receive other assistance as needed.

Spokane County Elections 1033 W Gardner Ave Spokane WA 99260
509-477-2320 website: www.spokanecounty.org/elections email: elections@spokanecounty.org

For a list of the people and organizations that donated to ballot measure campaigns, visit www.pdc.wa.gov