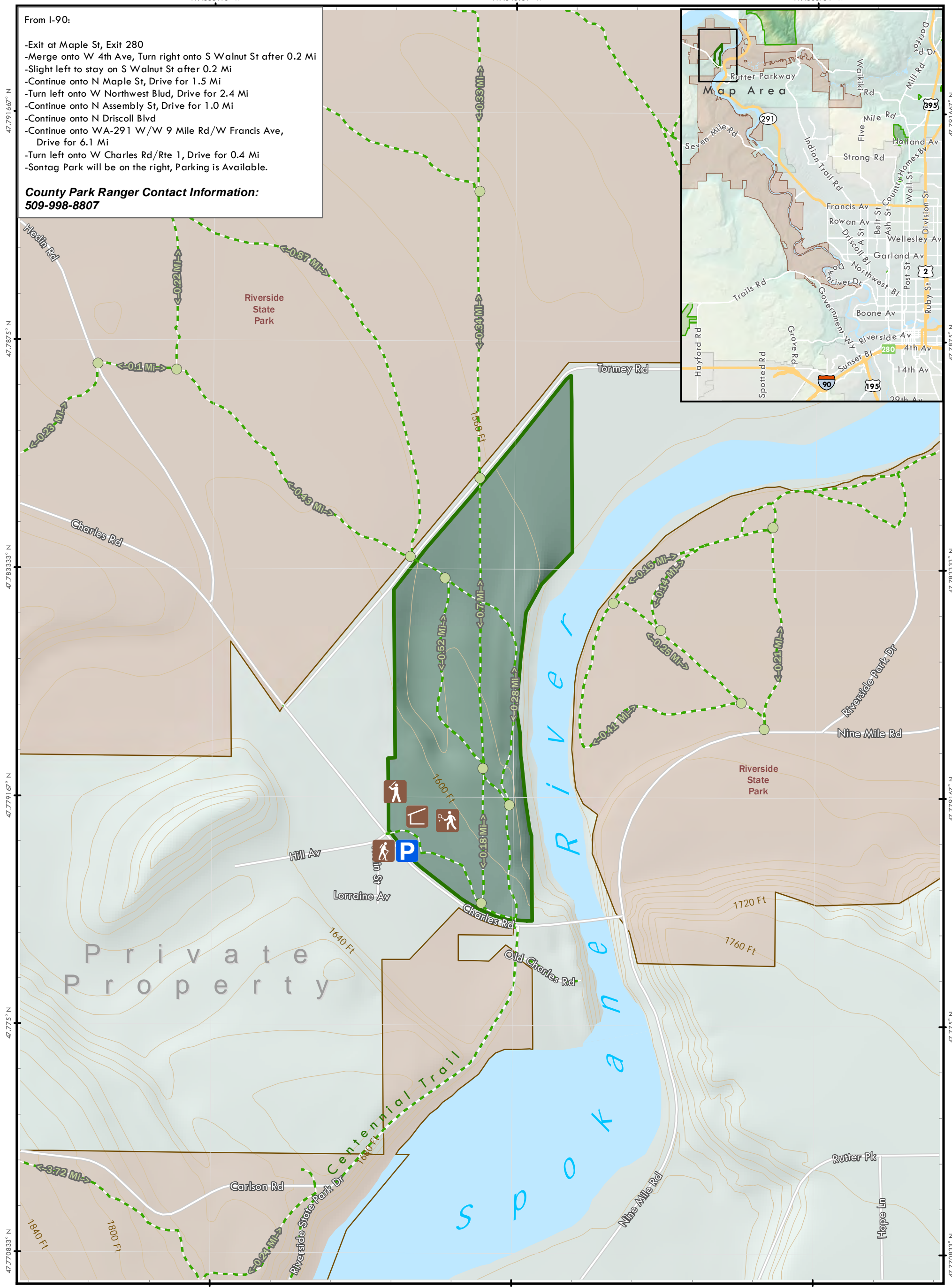
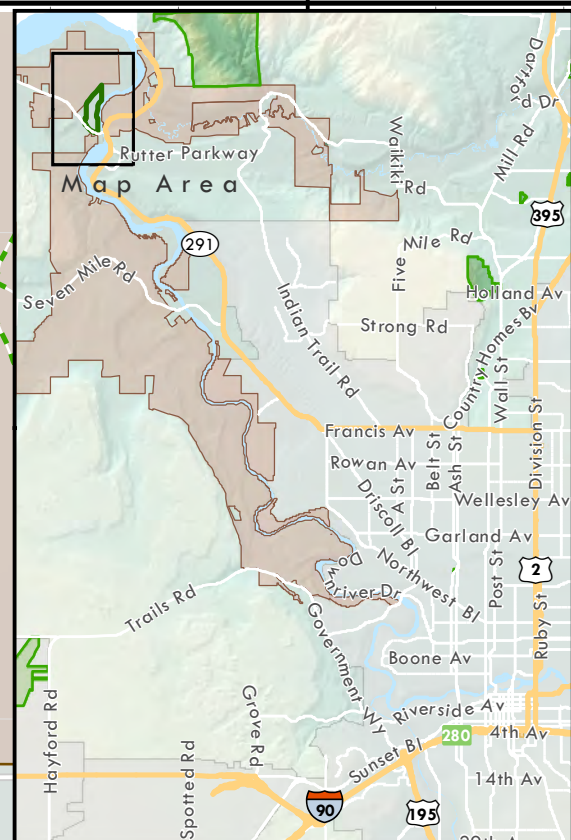


From I-90:

- Exit at Maple St, Exit 280
- Merge onto W 4th Ave, Turn right onto S Walnut St after 0.2 Mi
- Slight left to stay on S Walnut St after 0.2 Mi
- Continue onto N Maple St, Drive for 1.5 Mi
- Turn left onto W Northwest Blvd, Drive for 2.4 Mi
- Continue onto N Assembly St, Drive for 1.0 Mi
- Continue onto N Driscoll Blvd
- Continue onto WA-291 W/W 9 Mile Rd/W Francis Ave, Drive for 6.1 Mi
- Turn left onto W Charles Rd/Rte 1, Drive for 0.4 Mi
- Sontag Park will be on the right, Parking is Available.

**County Park Ranger Contact Information:**  
**509-998-8807**



Spokane County [\(Website\)](#)

- Sontag Park
- Other Spokane County Parks
- Other**
- Washington State Parks [\(Website\)](#)

- Trails
- Mileage Point
- Public Access
- Parking
- Tennis Court
- Shelter
- Baseball Field

# Sontag Park

Managed by  
Spokane County



Contour Interval: 20 Ft

Note: This is a GIS map showing base layers rendered for "best fit" with digital orthophotography. While every attempt is made to ensure the accuracy of this information, no warranty accompanies this map. If you have any additional questions, please contact the Spokane County Parks department at: 509-477-4730.