

117.130434° W

117.122267° W

117.1141° W

From I-90:

Take exit 293 for Barker Rd
Turn South onto N. Barker Rd, drive 0.5 miles
At Sprague Avenue, turn left, drive 1 mile
At S. Henry Rd, turn right and drive 0.9 miles
Parking will be on your left.

County Park Ranger Contact Information:
509-998-8807

47.645833° N

47.641667° N

47.6375° N

47.633333° N

47.629167° N

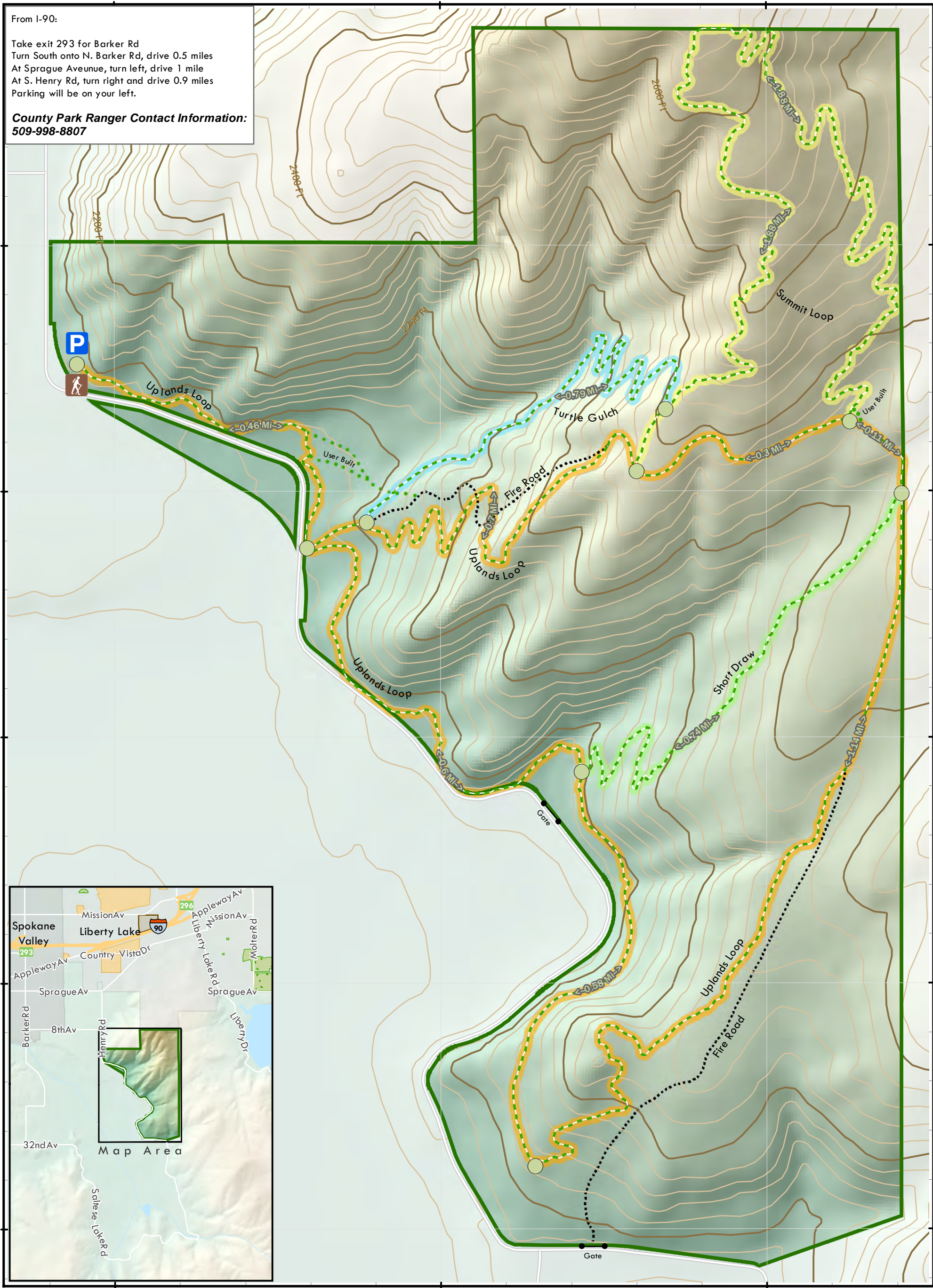
47.645833° N

47.641667° N

47.6375° N

47.633333° N

47.629167° N



117.130434° W

117.122267° W

117.1141° W

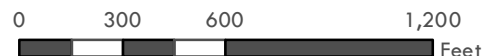
- Spokane County [\(Website\)](#)
- Saltese Uplands Conservation Area
- Other Spokane County Parks
- Other**
- Dept. of Natural Resources [\(Website\)](#)
- Inland Empire Paper Company [\(Website\)](#)

- Trails
- Unmaintained Route
- Fire Road
- Mileage Point
- Public Access
- Parking

Saltese Uplands Conservation Area

Owned and Managed by Spokane County

Spokane County Geographic Information Systems
Map Produced: June 2020



Contour Interval: 20 Ft

Note: This is a GIS map showing base layers rendered for "best fit" with digital orthophotography. While every attempt is made to ensure the accuracy of this information, no warranty accompanies this map. If you have any additional questions, please contact the Spokane County Parks department at: 509-477-4730.