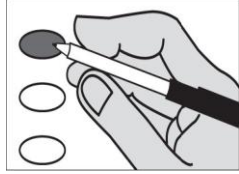
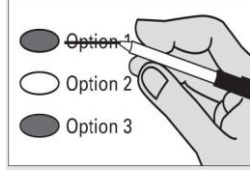


**Instructions**  
 Marking Your Ballot



Completely fill in the oval to the left of your choice.  
 Use a dark pen.  
 Unless specifically allowed by law, more than one vote for an office or ballot measure will be an overvote and no votes for that office or ballot measure will be counted. Vote for one candidate per office. To vote for a candidate whose name is not printed on the ballot, write the candidates name on the line provided and fill in the oval.

Correcting Your Ballot



If you make a correction, draw a line through the entire response. You then have the option of making another choice if you wish.  
 In order for your ballot to be counted, it must be either postmarked or deposited at a designated deposit site no later than 8:00 P.M. on Election Day (August 7). A list of Ballot Drop Box locations may be found at [www.spokanecounty.org/elections](http://www.spokanecounty.org/elections).

**Begin Voting Here**

**READ: Each candidate for partisan office may state a political party that he or she prefers. A candidate's preference does not imply that the candidate is nominated or endorsed by the party, or that the party approves of or associates with that candidate.**

Federal – Partisan Office

**U.S. Senator**

- Michael Baumgartner  
(Prefers Republican Party)
- Will Baker  
(Prefers Reform Party)
- Chuck Jackson  
(Prefers Republican Party)
- Timmy (Doc) Wilson  
(Prefers Democratic Party)
- Art Coday  
(Prefers Republican Party)
- Maria Cantwell  
(Prefers Democratic Party)
- Glen (Stocky) R. Stockwell  
(Prefers Republican Party)
- Mike the Mover  
(Prefers Republican Party)
- 

**U.S. Representative District 5**

- Ian Moody  
(States No Party Preference)
- Rich Cowan  
(Prefers Democratic Party)
- Randall L. Yearout  
(Prefers Republican Party)
- Cathy McMorris Rodgers  
(Prefers Republican Party)
- 

The Spokane County Elections Office will be open Monday – Friday 8:30 am to 4:00 pm to assist voters. Voters may drop off ballots, get replacement ballots, use an Accessible Voting unit, or receive other assistance as needed. Additional information may be found at:

Spokane County Elections  
 1033 W Gardner Ave  
 Spokane WA 99260  
 509-477-2320  
 Website: [www.spokanecounty.org/elections](http://www.spokanecounty.org/elections)  
 Email: [elections@spokanecounty.org](mailto:elections@spokanecounty.org)

**Vote Both Sides of Ballot**

State of Washington – Partisan Office

**Governor**

- Rob Hill  
(Prefers Democratic Party)
- Rob McKenna  
(Prefers Republican Party)
- Jay Inslee  
(Prefers Democratic Party)
- James White  
(Prefers Independent Party)
- Christian Joubert  
(States No Party Preference)
- Shahram Hadian  
(Prefers Republican Party)
- L. Dale Sorgen  
(Prefers Independent Party)
- Max Sampson  
(Prefers Republican Party)
- Javier O. Lopez  
(Prefers Republican Party)
- 

**Lt. Governor**

- Glenn Anderson  
(Prefers Indep Republican Party)
- Brad Owen  
(Prefers Democrat Party)
- James Robert Deal  
(States No Party Preference)
- Bill Finkbeiner  
(Prefers Republican Party)
- Dave T. Sumner IV  
(Prefers Neopopulist Party)
- Mark Greene  
(Prefers Democracy Indep. Party)
- 

**Secretary of State**

- Jim Kastama  
(Prefers Democratic Party)
- David J. Anderson  
(Prefers No Party Preference)
- Sam Wright  
(Prefers The Human Rights Party)
- Karen Murray  
(Prefers Constitution Party)
- Kathleen Drew  
(Prefers Democratic Party)
- Kim Wyman  
(Prefers Republican Party)
- Greg Nickels  
(Prefers Democratic Party)
- 

State of Washington – Partisan Office

**State Treasurer**

- Jim McIntire  
(Prefers Democratic Party)
- 

**State Auditor**

- Troy Kelley  
(Prefers Democratic Party)
- James Watkins  
(Prefers Republican Party)
- Mark Miloscia  
(Prefers Democratic Party)
- Craig Pridemore  
(Prefers Democratic Party)
- 

**Attorney General**

- Bob Ferguson  
(Prefers Democratic Party)
- Reagan Dunn  
(Prefers Republican Party)
- Stephen Pidgeon  
(Prefers Republican Party)
- 

**Commissioner of Public Lands**

- Stephen A. Sharon  
(States No Party Preference)
- Peter J. Goldmark  
(Prefers Democratic Party)
- Clint Didier  
(Prefers Republican Party)
- 

State of Washington – Nonpartisan Office

**Superintendent of Public Instruction**

- James Bauckman
- Randy I. Dorn
- Don Hansler
- John Patterson Blair
- Ronald L. (Ron) Higgins
- 

State of Washington – Partisan Office

**Insurance Commissioner**

- John R. Adams  
(Prefers Republican Party)
- Mike Kreidler  
(Prefers Democratic Party)
- Scott Reilly  
(Prefers Republican Party)
- Brian C. Berend  
(Prefers Independent Party)
-

**Legislative District 3 – Partisan Office**  
**State Senator**  
 Nancy McLaughlin  
(Prefers G.O.P. Party)  
 Andy Billig  
(Prefers Democratic Party)  
 -----

**State Representative Pos 1**  
 Tim Benn  
(Prefers G.O.P. Party)  
 Marcus Riccelli  
(Prefers Democratic Party)  
 Bob Apple  
(Prefers Democratic Party)  
 Jon Snyder  
(Prefers Democratic Party)  
 Morgan Oyler  
(Prefers Republican Party)  
 -----

**State Representative Pos 2**  
 Dave White  
(Prefers Republican Party)  
 Timm Ormsby  
(Prefers Democratic Party)  
 -----

**Legislative District 4 – Partisan Office**  
**State Senator**  
 Mike Padden  
(Prefers Republican Party)  
 -----

**State Representative Pos 1**  
 Larry Crouse  
(Prefers Republican Party)  
 -----

**State Representative Pos 2**  
 Matt Shea  
(Prefers Republican Party)  
 Amy C. Biviano  
(Prefers Democratic Party)  
 -----

**Legislative District 6 – Partisan Office**  
**State Representative Pos 1**  
 Kevin Parker  
(Prefers Republican Party)  
 -----

**State Representative Pos 2**  
 Jeff Holy  
(Prefers Republican Party)  
 Ben Oakley  
(Prefers Republican Party)  
 Dennis Dellwo  
(Prefers Democratic Party)  
 Larry Keller  
(Prefers Republican Party)  
 -----

**Legislative District 7 – Partisan Office**  
**State Representative Pos 1**  
 Shelly Short  
(Prefers Republican Party)  
 -----

**State Representative Pos 2**  
 Robert (Bob) Wilson  
(Prefers Republican Party)  
 Joel Kretz  
(Prefers Republican Party)  
 -----

**Legislative District 9 – Partisan Office**  
**State Senator**  
 Mark G. Schoesler  
(Prefers G.O.P. Party)  
 -----

**State Representative Pos 1**  
 Susan Fagan  
(Prefers Republican Party)  
 -----

**State Representative Pos 2**  
 Joe Schmick  
(Prefers Republican Party)  
 -----

**Spokane County – Partisan Office**  
**County Commissioner District 1**  
 John Roskelley  
(Prefers Democratic Party)  
 Todd Mielke  
(Prefers Republican Party)  
 -----

**County Commissioner District 2**  
 Shelly O'Quinn  
(Prefers Republican Party)  
 Rob Chase  
(Prefers Republican Party)  
 Daryl Romeyn  
(Prefers Democratic Party)  
 -----

**Judicial – Nonpartisan Office**  
**Supreme Court Justice Pos 2**  
 Douglas W. McQuaid  
 Susan Owens  
 Scott Stafne  
 -----

**Supreme Court Justice Pos 8  
(Six year short and full term)**  
 Bruce O. Danielson  
 Steve Gonzalez  
 -----

**Supreme Court Justice Pos 9**  
 Bruce Hilyer  
 Sheryl Gordon McCloud  
 Richard B. Sanders  
 John W. Landenburg  
 -----

**Court of Appeals Division 3 District 1 Position 1**  
 Laurel Siddoway  
 -----

**Local Ballot Measures**  
**City of Cheney**  
Proposition No. 1 -- City of Cheney  
Proposition Submitted by the Cheney City Council for Renewal  
of Residential Street Utility Tax  
The Cheney City Council adopted Resolution E-040 which  
concerns the continued repair and replacement of residential  
streets and sidewalks by renewing and extending the voter  
approved four percent tax on electrical energy and natural gas  
businesses to January 1, 2027. Should this proposition be:  
 Approved  
 Rejected

Proposition No. 2 -- City of Cheney  
Proposition Submitted by the Cheney City Council for  
Emergency Medical Services - Six Year Levy  
Shall the City of Cheney be authorized, pursuant to RCW  
84.52.069, to renew regular property tax levies upon the taxable  
property within the City of Cheney at rate of fifty cents (.50) per  
thousand dollars of assessed valuation for six consecutive  
years, commencing in 2012 for collection in 2013 for the  
purpose of funding emergency medical service.  
 Yes  
 No

**Local Ballot Measures**  
**Spokane Valley Fire Department**  
Proposition No. 1  
Spokane Valley Fire Department  
Replacement Maintenance and Operation Levy  
The Board of Fire Commissioners of Spokane Valley Fire  
Department adopted Resolution No. 2012-356 concerning a  
proposition to meet the District's maintenance and operation  
needs. This proposition would authorize the District to levy the  
following taxes, in replacement of an existing levy, upon all  
taxable property within the District, for support of the District's  
Expense Fund maintenance and operation expenditures as  
follows:  
Levy in 2012 for collection in 2013, a levy rate of approximately  
\$1.70 per \$1,000 of assessed value, to provide a levy amount of  
\$16,400,000; levy in 2013 for collection in 2014, a levy rate of  
approximately \$1.70 per \$1,000 of assessed value, to provide a  
levy amount of \$16,400,000; and levy in 2014 for collection in  
2015, a levy rate of approximately \$1.70 per \$1,000 of assessed  
value, to provide a levy amount of \$16,400,000. As specified in  
Resolution No. 2012-356.  
Should the proposition be approved?  
 Levy Yes  
 Levy No

**Fire Protection District No. 9**  
Proposition No. 1  
Spokane County Fire Protection District No. 9  
Replacement Maintenance and Operation Levy  
The Board of Commissioners of Spokane County Fire Protection  
District No. 9 adopted Resolution No. 12-11 concerning a  
proposition to meet the District's maintenance and operation  
needs. This proposition would authorize the District to levy the  
following taxes, in place of an existing levy, upon all taxable  
property within the District, for support of the District's Expense  
Fund expenditures for maintenance, operations and emergency  
medical services:  
Levy in 2012 for collection in 2013, a levy rate of approximately  
\$1.73 per \$1,000 of assessed value, to provide a levy amount of  
\$6,091,000; Levy in 2013 for collection in 2014, a levy rate of  
approximately \$1.77 per \$1,000 of assessed value, to provide a  
levy amount of \$6,294,000.  
Should the proposition be approved?  
 Levy Yes  
 Levy No

**For this office only:** In order to vote for a precinct  
committee officer, a partisan office, you must affirm  
that you are a Democrat or a Republican and may  
vote only for one candidate from the party you  
select. Your vote for a candidate affirms your  
affiliation with the same party as the candidate.  
This preference is private and will not be matched  
to your name or shared.

- Democrat  
I affirm I am a Democrat  
 Republican  
I affirm I am a Republican.

**Voter Service Centers will be open on election  
day only from 7:00 am to 8:00 pm.**  
Voters may drop off ballots; get replacement  
ballots; use an Accessible Voting Unit, or receive  
other assistance as needed on election day.

Downtown Spokane – Elections Office – 1033 W  
Gardner Ave  
Downtown Spokane – STA Plaza – 701 W  
Riverside Ave  
North Spokane – North Spokane Library – 44 E  
Hawthorne Rd  
South Hill – St. Mark's Church – 316 E 24<sup>th</sup> Ave  
Spokane Valley – CenterPlace – 2426 N Discovery  
Pl  
West Plains – Cheney Library – 610 First St

**Vote Both Sides of Ballot**

**End of Ballot**