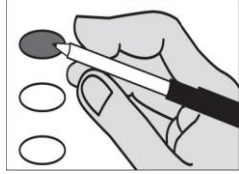


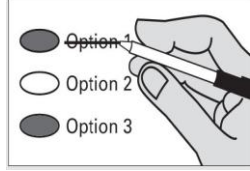
Instructions

Marking Your Ballot



Completely fill in the oval to the left of your choice.
 Use a dark pen.
 Unless specifically allowed by law, more than one vote for an office or ballot measure will be an overvote and no votes for that office or ballot measure will be counted. Vote for one candidate per office. To vote for a candidate whose name is not printed on the ballot, write the candidates name on the line provided and fill in the oval.

Correcting Your Ballot



To make a correction, draw a line through the entire response. You then have the option of making another choice if you wish.
 In order for your ballot to be counted, it must be either postmarked or deposited at a designated deposit site no later than 8:00 p.m. on Election Day (August 5). A list of Ballot Drop Box locations may be found at www.spokanecounty.org/elections.

Begin Voting Here

READ: Each candidate for partisan office may state a political party that he or she prefers. A candidate's preference does not imply that the candidate is nominated or endorsed by the party, or that the party approves of or associates with that candidate.

Federal – Partisan Office

U.S. Representative District 5

- Cathy McMorris Rodgers
(Prefers Republican Party)
- Dave Wilson
(Prefers Independent Party)
- Joseph (Joe) Pakootas
(Prefers Democratic Party)
- Tom Horne
(Prefers Republican Party)
-

Legislative District 3 – Partisan Office

State Representative Pos 1

- Tim Benn
(Prefers Independent R Party)
- Marcus Riccelli
(Prefers Democratic Party)
- Randy McGlenn II
(Prefers Libertarian Party)
-

State Representative Pos 2

- Paul Delaney
(Prefers Libertarian Party)
- Timm Ormsby
(Prefers Democratic Party)
-

Legislative District 4 – Partisan Office

State Representative Pos 1

Two Year Term Short and Full

- Leonard Christian
(Prefers Republican Party)
- Diana Wilhite
(Prefers Republican Party)
- Bob McCaslin
(Prefers Republican Party)
-

State Representative Pos 2

- Josh Arritola
(Prefers Republican Party)
- Matt Shea
(Prefers Republican Party)
-

Legislative District 6 – Partisan Office

State Senator

- Michael Baumgartner
(Prefers Republican Party)
- Rich Cowan
(Prefers Democratic Party)
-

State Representative Pos 1

- Donald Dover
(Prefers Democratic Party)
- Kevin Parker
(Prefers Republican Party)
-

State Representative Pos 2

- Jeff Holy
(Prefers Republican Party)
-

Legislative District 7 – Partisan Office

State Senator

- Tony Booth
(Prefers Republican Party)
- Brian Dansel
(Prefers Republican Party)
-

State Representative Pos 1

- Shelly Short
(Prefers Republican Party)
- James R. Apker
(Prefers Libertarian Party)
-

State Representative Pos 2

- Joel Kretz
(Prefers Republican Party)
- Ronnie Rae
(Prefers Centralist Party)
-

Legislative District 9 – Partisan Office

State Representative Pos 1

- Susan Fagan
(Prefers Republican Party)
-

State Representative Pos 2

- Joe Schmick
(Prefers G.O.P. Party)
-

Spokane County – Partisan Office

County Commissioner District 3

- Al French
(Prefers G.O.P. Party)
- Bonnie Mager
(Prefers Independent Party)
- Mary Lou Johnson
(Prefers Democratic Party)
-

Spokane County – Partisan Office

County Assessor

- Vicki Horton
(Prefers Republican Party)
- Roger E. Trainor
(Prefers Republican Party)
-

County Auditor

- Vicky M. Dalton
(Prefers Democratic Party)
- Alene Lindstrand
(Prefers G.O.P Party)
-

County Clerk

Four Year Term Full and Short

- Timothy W. Fitzgerald
(Prefers Republican Party)
-

County Prosecuting Attorney

- Breean L. Beggs
(Prefers Democratic Party)
- Larry Haskell
(Prefers Republican Party)
-

County Sheriff

- Ozzie D. Knezovich
(Prefers Republican Party)
- Doug Orr
(Prefers Republican Party)
-

County Treasurer

- Amy Biviano
(Prefers Democratic Party)
- Mary Kuney
(Prefers G.O.P Party)
- Rob Chase
(Prefers Republican Party)
-

The Spokane County Elections Office will be open Monday – Friday 8:30 am to 4:00 pm to assist voters. Voters may drop off ballots, get replacement ballots, use an Accessible Voting unit, or receive other assistance as needed. Additional information may be found at:

Spokane County Elections
 1033 W Gardner Ave
 Spokane WA 99260
 509-477-2320
 Website: www.spokanecounty.org/elections
 Email: elections@spokanecounty.org

Vote Both Sides of Ballot

Local Ballot Measures

Fire Protection District No. 4

Proposition No. 1
Fire Protection District No. 4
Bonds for Land, Fire Stations, Vehicles and
Equipment

The Board of Fire Commissioners of Fire Protection District No. 4, Spokane County, Washington adopted Resolution No. 14-01, concerning a proposition to finance land, fire stations, vehicles and equipment. This proposition would authorize the District to acquire land, construct and equip three new fire stations and a new fire training center, renovate existing fire stations and support facilities, acquire fire fighting and emergency medical service vehicles and equipment, and upgrade District-wide communication and information systems; issue no more than \$9,595,000 of general obligation bonds maturing within 20 years; and levy annual excess property taxes to repay the bonds, all as provided in Resolution No. 14-01. Should this proposition be:

Approved

Rejected

Fire Protection District No. 9

Proposition No. 1
Spokane County Fire Protection District No. 9
Replacement Maintenance and Operation Levy

The Board of Commissioners of Spokane County Fire Protection District No. 9 adopted Resolution No. 14-4 concerning a proposition to meet the District's maintenance and operation needs. This proposition would authorize the District to levy the following taxes, in place of an existing levy, upon all taxable property within the District, for support of the District's Expense Fund expenditures for maintenance, operations and emergency medical services:

Levy in 2014 for collection in 2015, a levy rate of approximately \$1.79 per \$1,000 of assessed value, to provide a levy amount of \$6,400,000; Levy in 2015 for collection in 2016, a levy rate of approximately \$1.79 per \$1,000 of assessed value, to provide a levy amount of \$6,530,000.

Should the proposition be approved?

Levy Yes

Levy No

For this office only: In order to vote for a precinct committee officer, a partisan office, you must affirm that you are a Democrat or a Republican and may vote only for one candidate from the party you select. Your vote for a candidate affirms your affiliation with the same party as the candidate. This preference is private and will not be matched to your name or shared.

Democrat
I affirm I am a Democrat.

Republican
I affirm I am a Republican.

Vote Both Sides of Ballot

Voter Service Centers will be open on Election Day only from 7:00 a.m. to 8:00 p.m.

Voters may drop off ballots; get replacement ballots; use an Accessible Voting Unit, or receive other assistance as needed on Election Day.

Downtown Spokane – Elections Office – 1033 W Gardner Ave
Downtown Spokane – STA Plaza – 701 W Riverside Ave
North Spokane – North Spokane Library – 44 E Hawthorne Rd
South Hill – St. Mark’s Church – 316 E 24th Ave
Spokane Valley – CenterPlace – 2426 N Discovery Pl
West Plains – Cheney Library – 610 First St

Ballot Drop Box Locations are available 20 days prior to Election Day

Airway Heights Library - 1213 S Lundstrom St
Argonne Library - 4322 N Argonne Rd
Cheney Library - 610 First St
Deer Park Library - 208 S Forest Ave
Downtown Spokane Library - 906 W Main Ave
East Side Library - 524 S Stone St
Elections Office -1033 W Gardner Ave
Fairfield Library - 305 E Main St
Hillyard Library - 4005 N Cook St
Indian Trail Library - 4909 W Barnes Rd
Liberty Lake Library - 23123 E Mission Ave
Medical Lake Library - 321 E Herb St
Moran Prairie Library - 6004 S Regal St
North Spokane Library - 44 E Hawthorne Rd
Otis Orchards Library - 22324 E Wellesley Ave
Shadle Library - 2111 W Wellesley Ave
South Hill Library - 3324 S Perry St
Spokane Valley Library - 12004 E Main Ave
STA Plaza - 701 W Riverside Ave

In order for your ballot to be counted, it must be either postmarked or deposited at a designated deposit site no later than 8:00 p.m. on Election Day. If depositing your ballot in a US Postal Service box, you must include first class postage (\$0.49).

For a list of the people and organizations that donated to state and local candidates and ballot measure campaigns, visit www.pdc.wa.gov.

End of Ballot