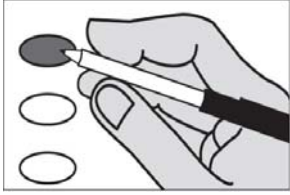


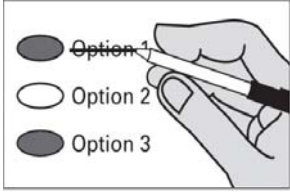
Instructions

Marking Your Ballot



Completely fill in the oval to the left of your choice.
Use a dark pen.
Unless specifically allowed by law, more than one vote for a contest will be an overvote and no votes for that ballot contest will be counted.

Correcting Your Ballot



If you make a correction, draw a line through the entire response. You then have the option of making another choice if you wish.

In order for your ballot to be counted, it must either be postmarked or deposited at a designated deposit site no later than 8:00 P.M. on Election Day (April 23, 2013). A list of Ballot Drop Box locations may be found at www.spokanecounty.org.

Reardan-Edwall School District

Proposition No. 1
Reardan-Edwall School District No. 9
Bonds to Renovate, Construct and Improve School Facilities

The Board of Directors of Reardan-Edwall School District No. 9 adopted Resolution No. 03-2012/13 concerning a proposition to renovate, construct and improve school facilities. This proposition would authorize the District to renovate the Elementary School, Middle/High School, Smith Gym and AG Building, construct a new elementary school in the Northeast portion of the District, and make District-wide energy efficiency, safety, security, technology, infrastructure and site improvements; issue no more than \$18,400,000 of general obligation bonds maturing within 25 years; and levy annual excess property taxes to repay the bonds, all as provided in Resolution No. 03-2012/13. Should this proposition be:

- Approved
- Rejected

Sample Ballot

Voter Service Centers will be open on Election Day (April 23, 2013) only from 7:00 am to 8:00 pm.

Voters may drop off ballots; get replacement ballots; use an Accessible Voting Unit, or receive other assistance as needed on Election Day.

Downtown Spokane - Elections Office - 1033 W Gardner Ave

Ballot Drop Box locations are available 20 days prior to Election Day

*Airway Heights Library 1213 S Lundstrom St

*Elections Office -1033 W Gardner Ave

If depositing your ballot in a US Postal Service box, you must include first class postage.

The Spokane County Elections Office is open weekdays from 8:30 a.m. to 4:00 p.m. Voters may drop off ballots; get replacement ballots; use an Accessible Voting Unit, or receive other assistance as needed.

For more information please visit our website at www.spokanecounty.org/elections; call our office at 509-477-2320 or email us at elections@spokanecounty.org.