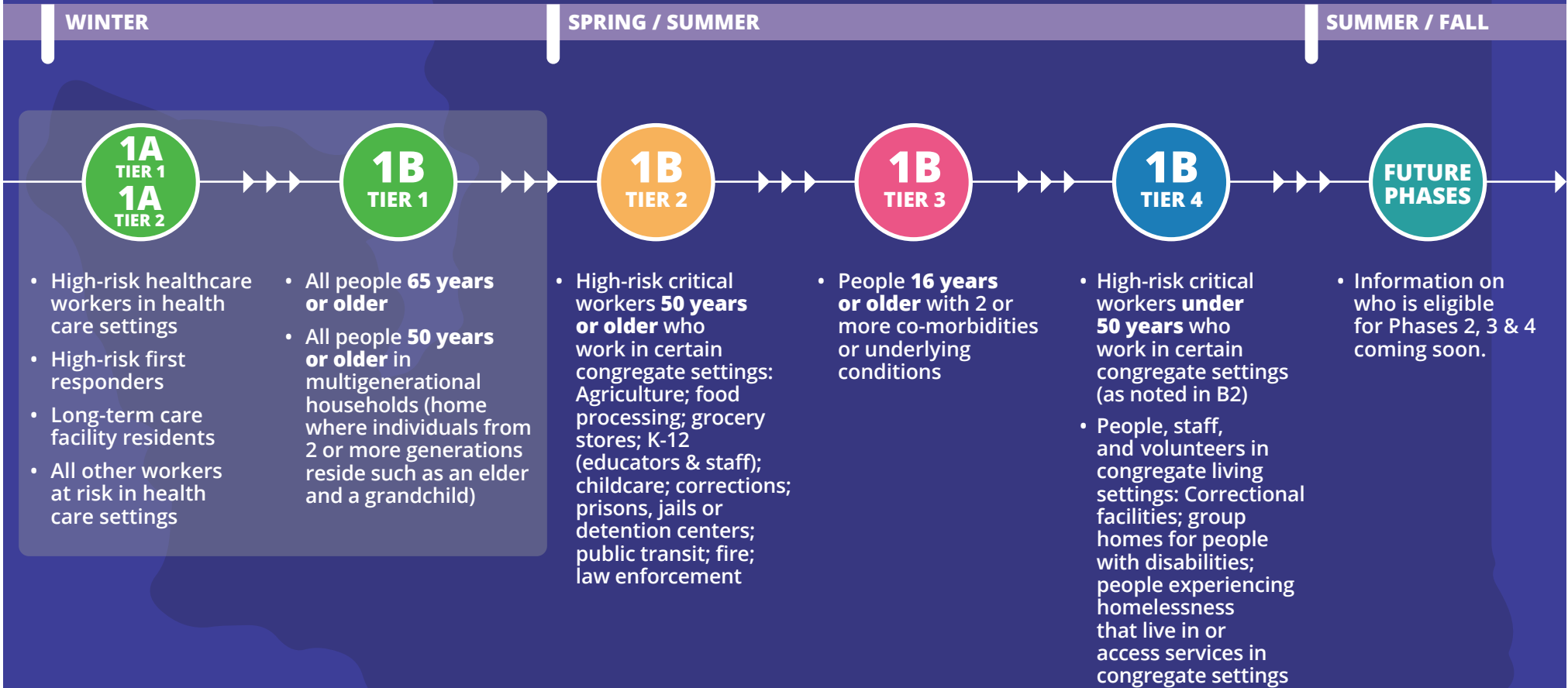


WASHINGTON'S COVID-19 VACCINE PHASES

Phase 1 Estimated Start Dates (Tiers A and B)

Find out if it's your turn at [FindYourPhaseWA.org](https://www.findyourphasewa.org)



FOCUS ON EQUITY: This approach prioritizes population groups that have been disproportionately impacted by COVID-19 due to external social factors and systemic inequities.

The timelines represented here are estimates and subject to change.

**Vaccinate
WA** 

[CovidVaccineWA.org](https://www.covidvaccinewa.org)

GLOSSARY OF TERMS

CO-MORBIDITIES

Morbidity is a medical term that means illness or disease. Co-morbidities means more than one illness or disease occurring in one person at the same time. Phase 1 – Tier 3 includes people with 2 more comorbidities or underlying conditions that put them at increased risk for severe illness if infected with COVID. This list of these conditions can be found on the CDC website: <https://www.cdc.gov/coronavirus/2019-ncov/need-extra-precautions/people-with-medical-conditions.html>.

CONGREGATE SETTING

An environment where individuals work and/or reside in an enclosed space and where they are interacting with a high volume of people over an extended period of time and not able to consistently maintain physical distance.

CRITICAL WORKERS

Individuals working in an industry that maintains critical infrastructure for social and economic systems in our state. (See reverse side for detailed list.)

HIGH-RISK WORKERS IN A HEALTHCARE SETTING

Workers who are at higher risk of COVID-19 infection because they meet one or more of the following criteria:

- Administer COVID-19 testing or handle COVID-19 specimens
- Administer COVID-19 vaccine or have patient contact in a COVID-19 vaccination site.
- Work at a community-based, congregate living facility (for example, long-term care facility, adult family home or residential care community) where people over 65 years old receive care, supervision or assistance.
- A professional care provider to someone who is at higher risk of severe outcomes if infected with COVID-19 (for example, home health aide, dialysis provider, or cancer treatment provider).

HIGH-RISK WORKERS IN A HEALTHCARE SETTING (CON'T)

- Worker (for example, healthcare provider, security, environmental management) in a setting that provides direct care for suspected or confirmed COVID-19 patients.
- First responder (for example, EMS, police or firefighter) in settings where direct care is provided to suspected or confirmed COVID-19 patients.
- Worker at high risk of infection and transmission of COVID-19 because of exposure to the general public.

LONG-TERM CARE FACILITY

For the purposes of the vaccine allocation guidance, long-term care facilities are defined as community-based, congregate living settings where most individuals over 65 years of age are receiving care, supervision, or assistance and are unable to reside independently in the community.

MULTIGENERATIONAL HOUSEHOLD

Household where individuals from 2 or more generations reside such as an elder and a grandchild. Does **not** include a parent or guardian caring for a child or teen.

WORKERS IN HEALTHCARE SETTINGS

Includes the full spectrum of workers at health agencies including all types of staff (e.g., contracted, part-time, unpaid/volunteer) and the spectrum of staff who provide services (e.g., ambulatory, direct patient care, support services).

To request this document in another format, call 1-800-525-0127. Deaf or hard of hearing customers, please call 711 (Washington Relay) or email civil.rights@doh.wa.gov.



CovidVaccineWA.org

DOH 348-785 January 2021