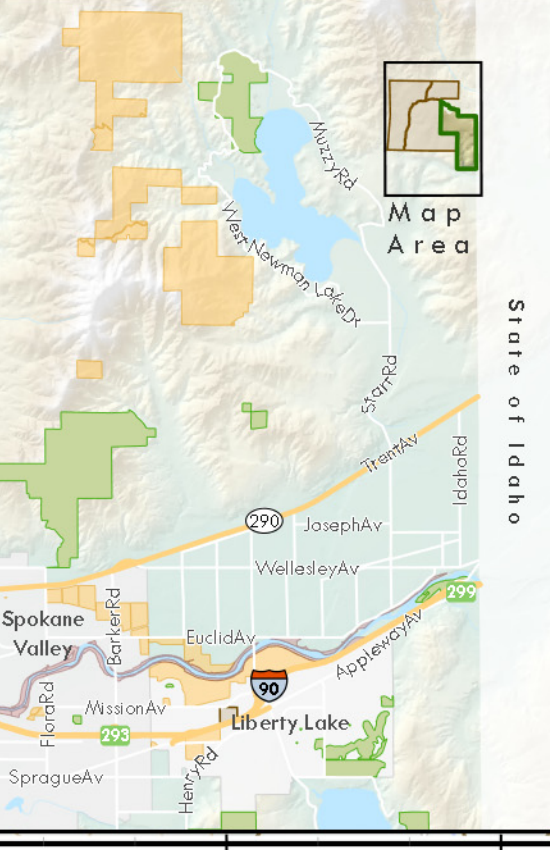
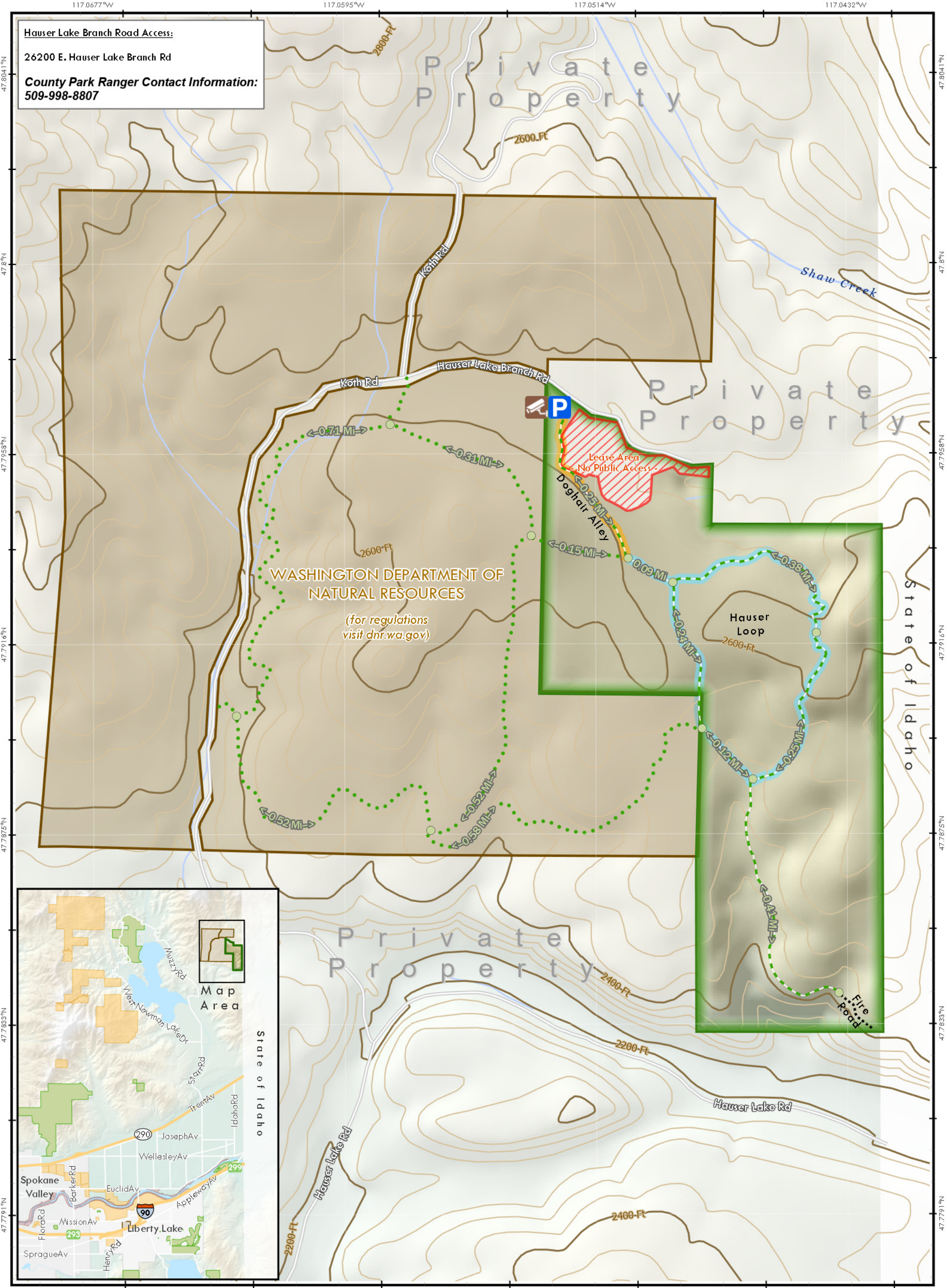


**Hauser Lake Branch Road Access:**  
 26200 E. Hauser Lake Branch Rd  
**County Park Ranger Contact Information:**  
 509-998-8807

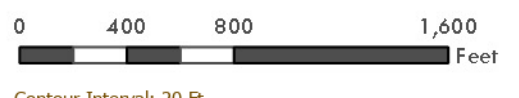


- Spokane County ([Website](#))
- Hauser Conservation Area
- Other Spokane County Parks
- Other
  - Dept. of Natural Resources ([Website](#))
  - Inland Empire Paper Company ([Website](#))
- Trails
- Unmaintained Route
- Fire Road
- Mileage Point
- Web Camera
- Parking

## Hauser Conservation Area

Owned and Managed by Spokane County

Spokane County Geographic Information Systems  
 Map Produced: June 2021



Contour Interval: 20 Ft

Note: This is a GIS map showing base layers rendered for "best fit" with digital orthophotography. While every attempt is made to ensure the accuracy of this information, no warranty accompanies this map. If you have any additional questions, please contact the Spokane County Parks department at: 509-477-4730.