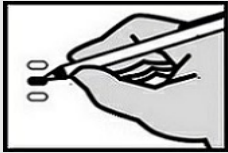
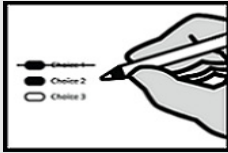


Sample Ballot
Spokane County Washington
November 3, 2020 General Election



Completely fill in the oval to the left of your choice. Vote for only one candidate in each contest. Use a dark blue or black pen.

Unless specifically allowed by law, more than one vote for a contest will be an overvote and no votes for that ballot contest will be counted. To vote for a candidate whose name is not printed on the ballot, write the name on the line provided and fill in the oval.



If you make a correction or mismark your ballot, draw a line through the entire response. You then have the option of making another choice.

In order for your ballot to be counted, it must either be postmarked or deposited at a designated deposit site no later than 8:00 p.m. on Election Day (November 3, 2020).

Referendum Measure

Referendum Measure No. 90

The legislature passed Engrossed Substitute Senate Bill 5395 concerning comprehensive sexual health education. This bill would require school districts to adopt or develop, consistent with state standards, comprehensive age-appropriate sexual health education, as defined, for all students, and excuse students if their parents request.

Should this bill be:

- Approved
- Rejected

Advisory Votes

Advisory Vote No. 35
Engrossed Senate Bill 6690

The legislature increased, without a vote of the people, the business and occupation tax on manufacturers of commercial airplanes, including components or tooling, costing \$1,024,000,000 in its first ten years, for government spending.

This tax increase should be:

- Repealed
- Maintained

Federal - Partisan Office

President/Vice President of the United States

Joseph R. Biden / Kamala D. Harris
 Democratic Party Nominees

Donald J. Trump / Michael R. Pence
 Republican Party Nominees

Jo Jorgensen / Jeremy "Spike" Cohen
 Libertarian Party Nominees

Howie Hawkins / Angela Walker
 Green Party Nominees

Gloria La Riva / Sunil Freeman
 Socialism and Liberation Party Nominees

Alyson Kennedy / Malcolm M. Jarrett
 Socialist Workers Party Nominees

Proposed Constitutional Amendment

Engrossed Senate Joint Resolution No. 8212

The legislature has proposed a constitutional amendment on investment of public funds. This amendment would allow public money held in a fund for long-term care services and supports to be invested by governments as authorized by state law, including investments in private stocks.

Should this constitutional amendment be:

- Approved
- Rejected

READ: Each candidate for President and Vice President is the official nominee of a political party. For other partisan offices, each candidate may state a political party that he or she prefers. A candidate's preference does not imply that the candidate is nominated or endorsed by the party, or that the party approves of or associates with that candidate.

Advisory Votes

Advisory Vote No. 32
Engrossed Substitute Senate Bill 5323

The legislature imposed, without a vote of the people, a retail sales tax on pass-through charges retail establishments collect for specified carryout bags, costing \$32,000,000 in its first ten years, for government spending.

This tax increase should be:

- Repealed
- Maintained

U.S. Representative

Cathy McMorris Rodgers
 (Prefers Republican Party)

Dave Wilson
 (Prefers Democratic Party)

Advisory Vote No. 33
Substitute Senate Bill 5628

The legislature imposed, without a vote of the people, a tax on heavy equipment rentals to consumers by heavy equipment rental property dealers, costing \$103,000,000 in its first ten years, for government spending.

This tax increase should be:

- Repealed
- Maintained

State of Washington - Partisan Office

Governor

Jay Inslee
 (Prefers Democratic Party)

Loren Culp
 (Prefers Republican Party)

Advisory Vote No. 34
Engrossed Substitute Senate Bill 6492

The legislature increased, without a vote of the people, the business and occupation tax rate for certain businesses, while reducing certain surcharges, costing \$843,000,000 in its first ten years, for government spending.

This tax increase should be:

- Repealed
- Maintained

For a list of the people and organizations that donated to state and local candidates and ballot measure campaigns, visit www.pdc.wa.gov.

Spokane County Elections
 Online: spokanecounty.org/elections
 Email: elections@spokanecounty.org
 Phone: 509-477-2320

State of Washington - Partisan Office

Lt. Governor

- Denny Heck
(Prefers Democratic Party)
- Marko Liias
(Prefers Democratic Party)
- _____

Secretary of State

- Kim Wyman
(Prefers Republican Party)
- Gael Tarleton
(Prefers Democratic Party)
- _____

State Treasurer

- Mike Pellicciotti
(Prefers Democratic Party)
- Duane A. Davidson
(Prefers Republican Party)
- _____

State Auditor

- Pat (Patrice) McCarthy
(Prefers Democratic Party)
- Chris Leyba
(Prefers Republican Party)
- _____

Attorney General

- Bob Ferguson
(Prefers Democratic Party)
- Matt Larkin
(Prefers Republican Party)
- _____

Commissioner of Public Lands

- Hilary Franz
(Prefers Democratic Party)
- Sue Kuehl Pederson
(Prefers Republican Party)
- _____

State of Washington - Nonpartisan Office

Superintendent of Public Instruction

- Chris Reykdal
- Maia Espinoza
- _____

State of Washington - Partisan Office

Insurance Commissioner

- Mike Kreidler
(Prefers Democratic Party)
- Chirayu Avinash Patel
(Prefers Republican Party)
- _____

Legislative District 3 - Partisan Office

ONLY REGISTERED VOTERS IN LEGISLATIVE DISTRICT 3 ARE ELIGIBLE TO VOTE ON THE FOLLOWING

State Senator

- Andy Billig
(Prefers Democratic Party)
- Dave Lucas
(Prefers Republican Party)
- _____

State Representative Pos. 1

- Marcus Riccelli
(Prefers Democratic Party)
- Laura D Carder
(Prefers Republican Party)
- _____

State Representative Pos. 2

- Timm Ormsby
(Prefers Democratic Party)
- Bob Apple
(Prefers R Party)
- _____

Legislative District 4 - Partisan Office

ONLY REGISTERED VOTERS IN LEGISLATIVE DISTRICT 4 ARE ELIGIBLE TO VOTE ON THE FOLLOWING

State Senator

- Mike Padden
(Prefers Republican Party)
- John Roskelley
(Prefers Democrat Party)
- _____

State Representative Pos. 1

- Bob McCaslin
(Prefers Republican Party)
- Lori Feagan
(Prefers Democratic Party)
- _____

State Representative Pos. 2

- Lance Gurel
(Prefers Democrat Party)
- Rob Chase
(Prefers Republican Party)
- _____

Legislative District 6 - Partisan Office

ONLY REGISTERED VOTERS IN LEGISLATIVE DISTRICT 6 ARE ELIGIBLE TO VOTE ON THE FOLLOWING

State Representative Pos. 1

- Mike Volz
(Prefers Republican Party)
- Zack Zappone
(Prefers Democratic Party)
- _____

Legislative District 6 - Partisan Office

ONLY REGISTERED VOTERS IN LEGISLATIVE DISTRICT 6 ARE ELIGIBLE TO VOTE ON THE FOLLOWING

State Representative Pos. 2

- Jenny Graham
(Prefers Republican Party)
- Tom McGarry
(Prefers Democratic Party)
- _____

Legislative District 7 - Partisan Office

ONLY REGISTERED VOTERS IN LEGISLATIVE DISTRICT 7 ARE ELIGIBLE TO VOTE ON THE FOLLOWING

State Representative Pos. 1

- Jacquelin Maycumber
(Prefers Republican Party)
- Georgia D. Davenport
(Prefers Democratic Party)
- _____

State Representative Pos. 2

- Joel Kretz
(Prefers Republican Party)
- JJ Wandler
(Prefers Independent Party)
- _____

Legislative District 9 - Partisan Office

ONLY REGISTERED VOTERS IN LEGISLATIVE DISTRICT 9 ARE ELIGIBLE TO VOTE ON THE FOLLOWING

State Senator

- Mark G. Schoesler
(Prefers GOP Party)
- Jenn Goulet
(Prefers Democratic Party)
- _____

State Representative Pos. 1

- Mary Dye
(Prefers Republican Party)
- Brett Borden
(Prefers Libertarian Party)
- _____

State Representative Pos. 2

- Joe Schmick
(Prefers GOP Party)
- _____

INTENTIONALLY LEFT BLANK

Spokane County - Partisan Office

Commissioner District 1

- Josh Kerns
(Prefers Republican Party)
- Ted Cummings
(Prefers Democratic Party)
-

Commissioner District 2

- Mary Kunej
(Prefers Republican Party)
- David Green
(Prefers Democratic Party)
-

Judicial - Nonpartisan Office

**Supreme Court Justice Position 3
Six year short and full term**

- Dave Larson
- Raquel Montoya-Lewis
-

Supreme Court Justice Position 4

- Charles W. Johnson
-

**Supreme Court Justice Position 6
Two year unexpired term**

- Richard S. Serns
- G. Helen Whitener
-

Supreme Court Justice Position 7

- Debra L. Stephens
-

Court of Appeals Division 3 District 1 Position 2

- Marshall Casey
- Tracy Arlene Staab
-

Public Utility District - Nonpartisan Office

ONLY REGISTERED VOTERS IN PUBLIC UTILITY DISTRICT - 001 ARE ELIGIBLE TO VOTE ON THE FOLLOWING

PUD Commissioner District 2

- Howie Kubik
-

Town of Rockford

ONLY REGISTERED VOTERS IN TOWN OF ROCKFORD ARE ELIGIBLE TO VOTE ON THE FOLLOWING

Proposition No. 1

Town of Rockford
Fire Protection Service Excess Levy

The Rockford Town Council enacted Resolution 20-05 concerning a proposition to finance 2021 fire protection services. This proposition would authorize the Town to levy an excess property tax in 2021 on all taxable property within the Town of Rockford at an approximate rate of \$.51 per \$1,000 of assessed value to raise \$17,458.79 to be used to provide adequate services in 2021. This levy replaces an expired levy, which the Town has collected in past years.

Should this proposition be approved?

- Yes
- No

Town of Spangle

ONLY REGISTERED VOTERS IN TOWN OF SPANGLE ARE ELIGIBLE TO VOTE ON THE FOLLOWING

Proposition No. 1

Town of Spangle
Fire Protection Service Excess Levy

The Spangle Town Council enacted ordinance NO. 439 concerning a proposition to finance the 2021 fire protection services. This proposition would authorize the Town to levy an excess property tax in 2021 on all taxable property within the Town of Spangle in an approximate rate of \$1.50 per \$1,000 of assessed value to raise \$23,000 to be used to provide adequate fire protection services in 2021.

Should this proposition be approved?

- Yes
- No

Proposition No. 2

Town of Spangle
Police Protection Service Excess Levy

The Spangle Town Council enacted Ordinance NO. 440 concerning a proposition to finance the 2021 Police Protection Services. This proposition would authorize the Town to levy an excess property tax in 2021 on all taxable property within the Town of Spangle in an approximate rate of \$1.19 per \$1,000 of assessed value to raise \$17,000.00 to be used to provide adequate police protection services in 2021.

Should this proposition be approved?

- Yes
- No

Fire Protection District No. 12

ONLY REGISTERED VOTERS IN FD12 ARE ELIGIBLE TO VOTE ON THE FOLLOWING

Proposition No. 1

Spokane County Fire Protection District No. 12
Emergency Medical Services Regular Property Tax Levy

Shall Spokane County Fire Protection District No. 12 be authorized to levy a regular property tax in the sum of \$.50 per \$1000 assessed valuation each year for six consecutive years beginning in 2021 to be collected in 2021 through 2026, inclusive, for the provision of Emergency Medical Services all as provided in Spokane County Fire Protection District No. 12 - Resolution No. 20-1 and the Laws of the State of Washington RCW 84.52.069?

- Yes
- No

Spangle Cemetery District 1

ONLY REGISTERED VOTERS IN CD-01 SPANGLE ARE ELIGIBLE TO VOTE ON THE FOLLOWING

Proposition No. 1

Spangle Cemetery District No. 1
Maintenance and Operation Support Levy

The Board of Directors of Spangle Cemetery District No. 1 adopted Resolution #14-01 on May 15, 2020 concerning a proposition to finance 2021 maintenance and operation expenses. This proposition would authorize the District to levy excess tax upon all taxable property within the District for support of the District's maintenance and operation expenses as follows: Levy a rate of approximately \$0.20 per \$1,000 of assessed value, for collection of \$20,000.00 in 2021, all as provided in Resolution #14-01.

Should this proposition be approved?

- Levy Yes
- Levy No

INTENTIONALLY LEFT BLANK