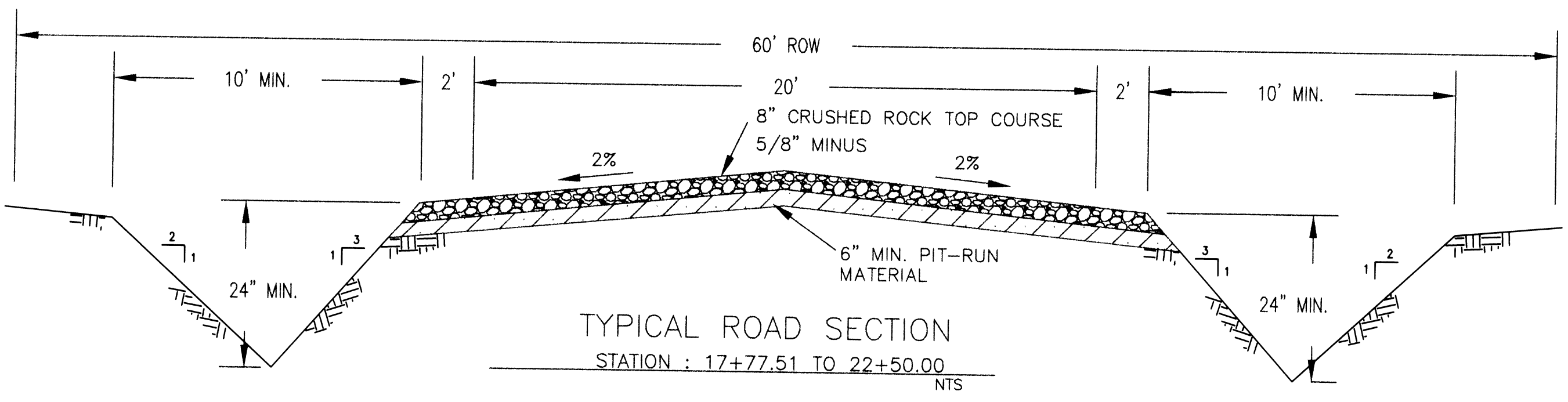
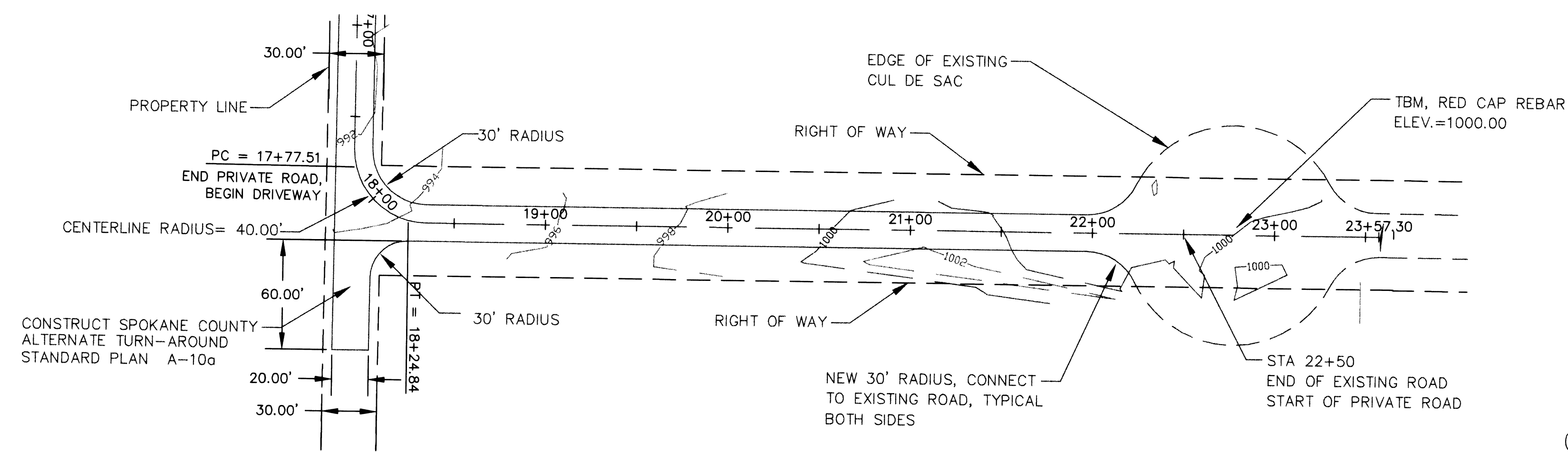
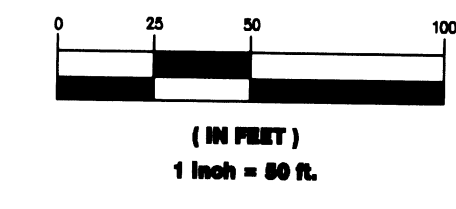


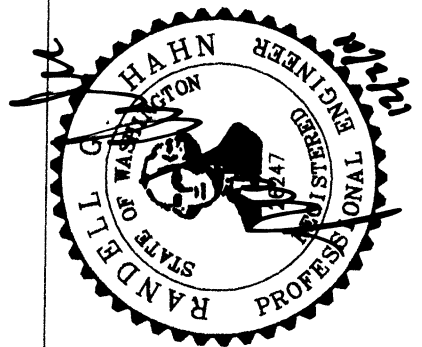
SPokane County Engineers Office
 OFFICIAL PUBLIC DOCUMENT ORIGINAL
CONSTRUCTION PLANS
 PROJECT # **F-0131**
 DATE ACCEPTED **12/14/11**
 ACCEPTED BY **12/14/11**
 PROJECT LICENSE # **0009**
 RECORD COPY TO BE FILED PRIOR TO COUNTY/STATE DEPARTMENT OF THE ROADS AND DISTRICT ENGINEER'S OFFICE.
 PERMIT REQUIRED (1) (2) (3) (4) (5) (6) (7) (8) (9) (10) (11) (12) (13) (14) (15) (16) (17) (18) (19) (20) (21) (22) (23) (24) (25) (26) (27) (28) (29) (30) (31) (32) (33) (34) (35) (36) (37) (38) (39) (40) (41) (42) (43) (44) (45) (46) (47) (48) (49) (50) (51) (52) (53) (54) (55) (56) (57) (58) (59) (60) (61) (62) (63) (64) (65) (66) (67) (68) (69) (70) (71) (72) (73) (74) (75) (76) (77) (78) (79) (80) (81) (82) (83) (84) (85) (86) (87) (88) (89) (90) (91) (92) (93) (94) (95) (96) (97) (98) (99) (100)
 NOTIFY PERMIT ENGINEER 2 BUSINESS DAYS PRIOR TO CONSTRUCTION



NOTE:
 ON-SITE GRADING SHALL BE IN ACCORDANCE WITH THE APPROVED PLAN AND ESC PLAN. ANY IMPORT OR EXPORT OF MATERIAL SHALL BE FROM A PRE-APPROVED SOURCE/DESTINATION AND COORDINATED WITH SPOKANE COUNTY. GRADING ON THIS SITE OR ANY OTHER SITE MUST COMPLY WITH ALL DEVELOPMENT REGULATIONS INCLUDING, BUT NOT LIMITED TO GRADING PERMITS, SEPA REVIEW, TIMBER HARVEST PERMITS, CRITICAL AREAS, FLOODPLAINS, DESIGNATED DRAINAGE WAYS, ETC.

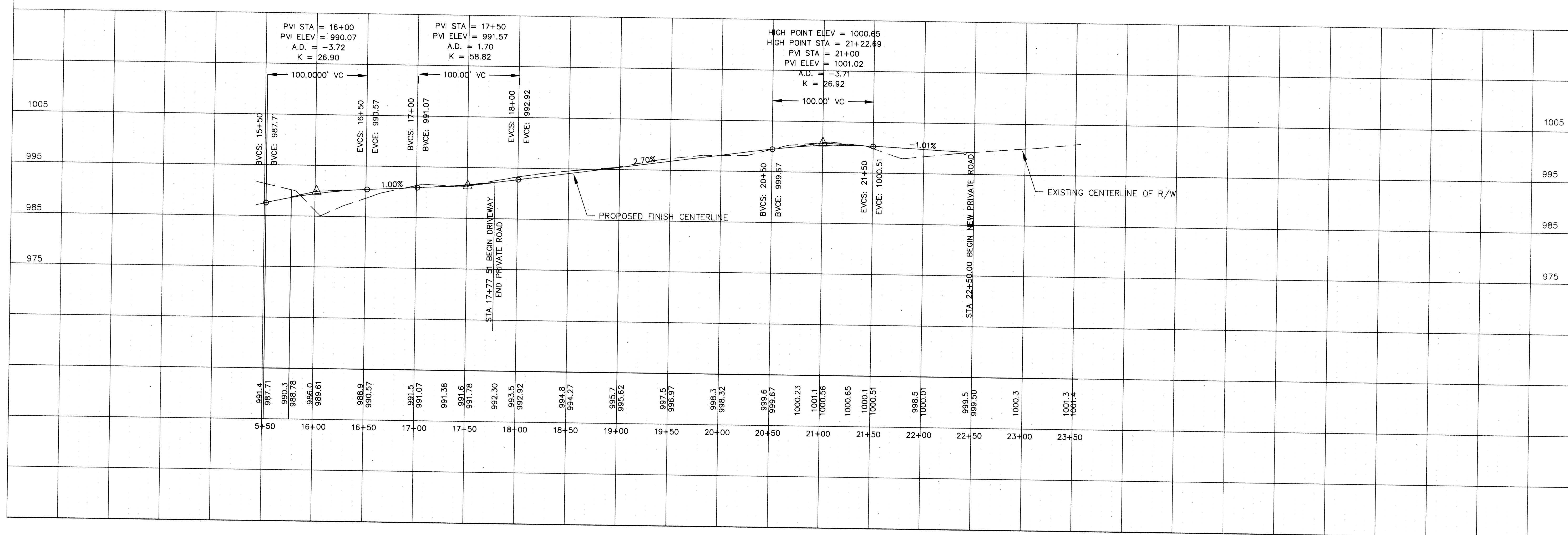
BENCH MARK:
 TEMPORARY BENCH MARK SET 1/2" REBAR SET IN CENTER OF CUL DE SAC, LOCAL DATUM = ELEVATION 1000.00.

- GENERAL SPECIFICATIONS**
- 1) ALL WORK AND MATERIALS SHALL BE IN CONFORMANCE WITH SPOKANE COUNTY ROAD STANDARDS AS AMENDED.
 - 2) LOCATIONS OF EXISTING UTILITIES SHOWN IN THE PLANS ARE APPROXIMATE. THE CONTRACTOR SHALL BE RESPONSIBLE FOR LOCATING ALL UNDERGROUND UTILITIES. ANY CONFLICTING UTILITIES SHALL BE RELOCATED PRIOR TO CONSTRUCTION OF DRAINAGE FACILITIES.
 - 3) THE CONTRACTOR IS REQUIRED TO HAVE A COMPLETE SET OF THE APPROVED PLANS ON THE JOB SITE WHENEVER CONSTRUCTION IS IN PROGRESS.
 - 4) IF THE CONTRACTOR DISCOVERS ANY DISCREPANCIES BETWEEN THE PLANS AND EXISTING CONDITIONS ENCOUNTERED, THE CONTRACTOR SHALL IMMEDIATELY NOTIFY THE DESIGN ENGINEER.
 - 5) PRIOR TO SITE CONSTRUCTION, THE CONTRACTOR IS RESPONSIBLE FOR LOCATING UNDERGROUND UTILITIES. CALL THE UNDERGROUND UTILITY LOCATION SERVICE AT 1-800-424-5555 BEFORE YOU DIG.
 - 6) EXISTING TOPOGRAPHIC INFORMATION IS FOR REFERENCE ONLY. IF ANY DISCREPANCIES ARE NOTED, CONTACT HAHN ENGINEERING @ (509) 467-1550.



HAHN ENGINEERING, INC.
 905 E. HASTINGS RD.
 SPOKANE, WA 99218
 (509) 467-1550 FAX (509) 467-8189
 www.hahnengr.com

KIM GALLAGHER
 WHISPERING PINES ROAD
PRIVATE ROAD PLAN



STREET
 SHEET NO.
 1 / 1