

1. ALL REINFORCING STEEL SHALL BE THE HIGHEST GRADE PER THE STANDARD SPECIFICATIONS FOR REINFORCING STEEL FOR BRIDGES AND SHALL BE SUPPLIED BY THE CONTRACTOR TO THE PROJECT OFFICE.

2. THE CONTRACTOR SHALL BE RESPONSIBLE FOR OBTAINING ALL NECESSARY PERMITS AND APPROVALS FROM THE LOCAL, STATE AND FEDERAL AGENCIES FOR THE CONSTRUCTION OF THIS PROJECT.

3. THE CONTRACTOR SHALL MAINTAIN A RECORD OF ALL MATERIALS USED IN THE CONSTRUCTION OF THIS PROJECT AND SHALL SUBMIT THIS RECORD TO THE PROJECT OFFICE FOR REVIEW AND APPROVAL.

4. THE CONTRACTOR SHALL MAINTAIN A RECORD OF ALL LABORERS EMPLOYED ON THIS PROJECT AND SHALL SUBMIT THIS RECORD TO THE PROJECT OFFICE FOR REVIEW AND APPROVAL.

5. THE CONTRACTOR SHALL MAINTAIN A RECORD OF ALL EQUIPMENT USED ON THIS PROJECT AND SHALL SUBMIT THIS RECORD TO THE PROJECT OFFICE FOR REVIEW AND APPROVAL.

6. THE CONTRACTOR SHALL MAINTAIN A RECORD OF ALL SAFETY INCIDENTS THAT OCCUR ON THIS PROJECT AND SHALL SUBMIT THIS RECORD TO THE PROJECT OFFICE FOR REVIEW AND APPROVAL.

7. THE CONTRACTOR SHALL MAINTAIN A RECORD OF ALL ACCIDENTS THAT OCCUR ON THIS PROJECT AND SHALL SUBMIT THIS RECORD TO THE PROJECT OFFICE FOR REVIEW AND APPROVAL.

8. THE CONTRACTOR SHALL MAINTAIN A RECORD OF ALL DEFECTS THAT OCCUR ON THIS PROJECT AND SHALL SUBMIT THIS RECORD TO THE PROJECT OFFICE FOR REVIEW AND APPROVAL.

9. THE CONTRACTOR SHALL MAINTAIN A RECORD OF ALL INSPECTIONS THAT OCCUR ON THIS PROJECT AND SHALL SUBMIT THIS RECORD TO THE PROJECT OFFICE FOR REVIEW AND APPROVAL.

10. THE CONTRACTOR SHALL MAINTAIN A RECORD OF ALL TESTS THAT OCCUR ON THIS PROJECT AND SHALL SUBMIT THIS RECORD TO THE PROJECT OFFICE FOR REVIEW AND APPROVAL.

11. THE CONTRACTOR SHALL MAINTAIN A RECORD OF ALL MEETINGS THAT OCCUR ON THIS PROJECT AND SHALL SUBMIT THIS RECORD TO THE PROJECT OFFICE FOR REVIEW AND APPROVAL.

12. THE CONTRACTOR SHALL MAINTAIN A RECORD OF ALL CORRECTIONS THAT OCCUR ON THIS PROJECT AND SHALL SUBMIT THIS RECORD TO THE PROJECT OFFICE FOR REVIEW AND APPROVAL.

13. THE CONTRACTOR SHALL MAINTAIN A RECORD OF ALL CHANGES THAT OCCUR ON THIS PROJECT AND SHALL SUBMIT THIS RECORD TO THE PROJECT OFFICE FOR REVIEW AND APPROVAL.

14. THE CONTRACTOR SHALL MAINTAIN A RECORD OF ALL DELAYS THAT OCCUR ON THIS PROJECT AND SHALL SUBMIT THIS RECORD TO THE PROJECT OFFICE FOR REVIEW AND APPROVAL.

15. THE CONTRACTOR SHALL MAINTAIN A RECORD OF ALL COSTS THAT OCCUR ON THIS PROJECT AND SHALL SUBMIT THIS RECORD TO THE PROJECT OFFICE FOR REVIEW AND APPROVAL.

16. THE CONTRACTOR SHALL MAINTAIN A RECORD OF ALL RISKS THAT OCCUR ON THIS PROJECT AND SHALL SUBMIT THIS RECORD TO THE PROJECT OFFICE FOR REVIEW AND APPROVAL.

17. THE CONTRACTOR SHALL MAINTAIN A RECORD OF ALL COMPLAINTS THAT OCCUR ON THIS PROJECT AND SHALL SUBMIT THIS RECORD TO THE PROJECT OFFICE FOR REVIEW AND APPROVAL.

18. THE CONTRACTOR SHALL MAINTAIN A RECORD OF ALL LEGAL ACTIONS THAT OCCUR ON THIS PROJECT AND SHALL SUBMIT THIS RECORD TO THE PROJECT OFFICE FOR REVIEW AND APPROVAL.

19. THE CONTRACTOR SHALL MAINTAIN A RECORD OF ALL OTHER MATTERS THAT OCCUR ON THIS PROJECT AND SHALL SUBMIT THIS RECORD TO THE PROJECT OFFICE FOR REVIEW AND APPROVAL.

CONTRACTOR'S SIGNATURE

OWNER'S APPROVAL

GENERAL NOTES



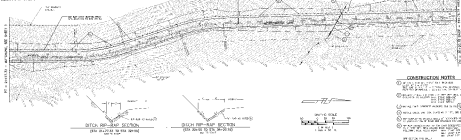
PROJECT NO.	
DATE	
SCALE	
BY	
CHECKED BY	
DATE	

Professional Engineer Seal for the State of Florida

DATE

PROPOSED 12' WIDE
 12' WIDE ROAD
 12' WIDE ROAD
 12' WIDE ROAD

LEGEND
 [Symbol] 1/2" = 100' HORIZ.
 [Symbol] 1" = 10' VERT.



- CONSTRUCTION NOTES**
1. ALL EXISTING UTILITIES TO REMAIN.
 2. ALL EXISTING UTILITIES TO BE DELETED.
 3. ALL EXISTING UTILITIES TO BE DELETED.
 4. ALL EXISTING UTILITIES TO BE DELETED.
 5. ALL EXISTING UTILITIES TO BE DELETED.
 6. ALL EXISTING UTILITIES TO BE DELETED.
 7. ALL EXISTING UTILITIES TO BE DELETED.
 8. ALL EXISTING UTILITIES TO BE DELETED.

COUNTY DATA
 12' WIDE ROAD
 12' WIDE ROAD
 12' WIDE ROAD

SEC. 28, T.24 N., R.43 E., WM.
 SPOKANE COUNTY, WASHINGTON

PLATE INFORMATION

DATE	NO.	BY	CHKD.
12/1/20	1	J. SMITH	J. SMITH

John A. Smith
 DESIGNER'S APPROVAL
 DATE



12' WIDE ROAD
 12' WIDE ROAD
 12' WIDE ROAD
 12' WIDE ROAD

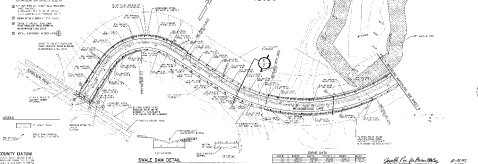
ISLAND PLANNING CORPORATION
 12' WIDE ROAD
 12' WIDE ROAD
 12' WIDE ROAD

THE WIDE AT HARBOR
 EMERGENCY ACCESS ROAD
 12' WIDE ROAD
 12' WIDE ROAD

CONSTRUCTION NOTES

- 1. ALL PAVEMENT SHALL BE 4" ASPHALT ON 4" GRANULAR FILL ON 4" GRANULAR SUBGRADE.
- 2. ALL CURBS SHALL BE 4" HIGH CONCRETE ON 4" GRANULAR FILL ON 4" GRANULAR SUBGRADE.
- 3. ALL SIDEWALKS SHALL BE 4" CONCRETE ON 4" GRANULAR FILL ON 4" GRANULAR SUBGRADE.
- 4. ALL UTILITY LINES SHALL BE 4" DIA. CONCRETE PIPE ON 4" GRANULAR FILL ON 4" GRANULAR SUBGRADE.

SEC. 36, T.29 N., R.43 E., W.4
SPOKANE COUNTY, WASHINGTON

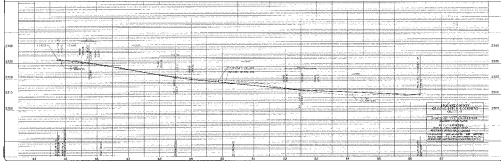


COUNTY DATUM
NAD 83
SPOKANE COUNTY
SPOKANE, WASHINGTON

SCALE 24X DETAIL
1" = 20'



Spokane County
Public Works Division
DATE



VERTICAL CURVE DATA
 GRADE 1: -1.5%
 GRADE 2: -0.5%
 PVI: 1015.0'
 L: 100.0'
 BVC: 1000.0'
 EVC: 1100.0'
 HIGHEST POINT: 1015.0'
 LOWEST POINT: 1005.0'

M. J. M. and Associates, Inc.
 ENGINEERS
 1000 N. W. 10th St.
 STE. 1000
 SEASIDE, WA 99158
 TEL: 425-225-1100

