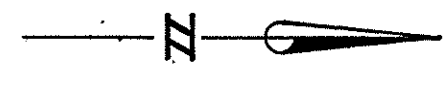


- NOTES:
- "WILBERT VAULT" OUTFALL BOX # 4016 OR APPROVED EQUAL.
  - (2) 18" CMP'S OR APPROVED EQUAL TO BE ALIGNED W/ DRAINAGE FLOW LINE. MIN. WALL THICKNESS TO BE 0.004"
- INLET I.E. = 2018.75  
OUTLET I.E. = 2018.50



PERMIT REQUIRED!  
NOTIFY THE PERMIT ENGINEER  
456-3600  
24 HRS. PRIOR TO CONSTRUCTION

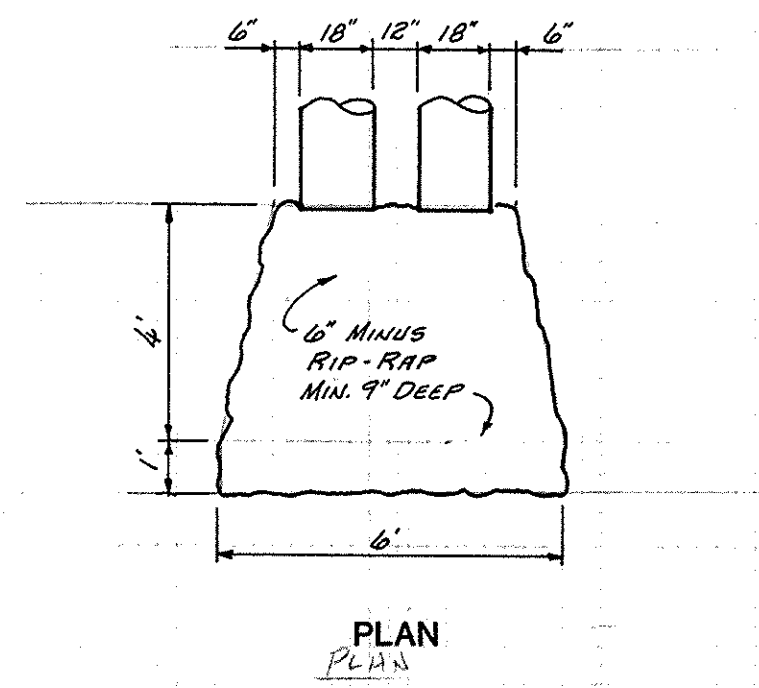
DEVELOPER'S APPROVAL: *[Signature]* 10/3/90

GRADE ORDINANCE LIST					COUNTY DATUM	SCALE	DATE
FROM	TO	ORD. NO.	DATE	FILE NO.	TBM FROM COUNTY SEWER PROJECT	HORIZONTAL 1" = 50'	DATE
					ELEVATION 2025.54 <th>VERTICAL 1" = 10'</th> <th>DATE</th>	VERTICAL 1" = 10'	DATE
					LOCATION "A" ON FIRE HYDRANT N.E. QUAD., 32nd and ADAMS <td></td> <td></td>		

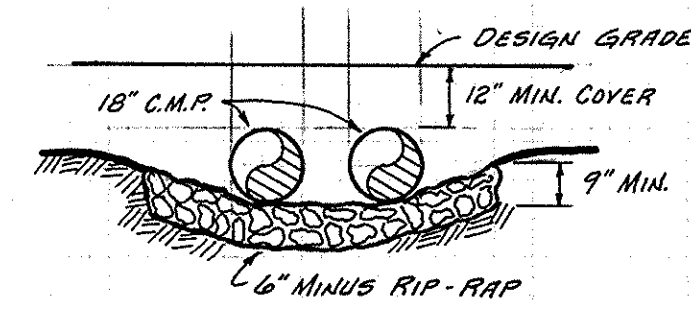
  

BY	REVISIONS	DATE	PROJ.	FROM AS BUILT	TO	ACCEPT

LAZY FOX ESTATES		TYPE OF IMPROVEMENT: STREET	
WARREN LANE - STA. 46+89.19 TO 52+80		PROJECT NUMBER	PLAN NUMBER

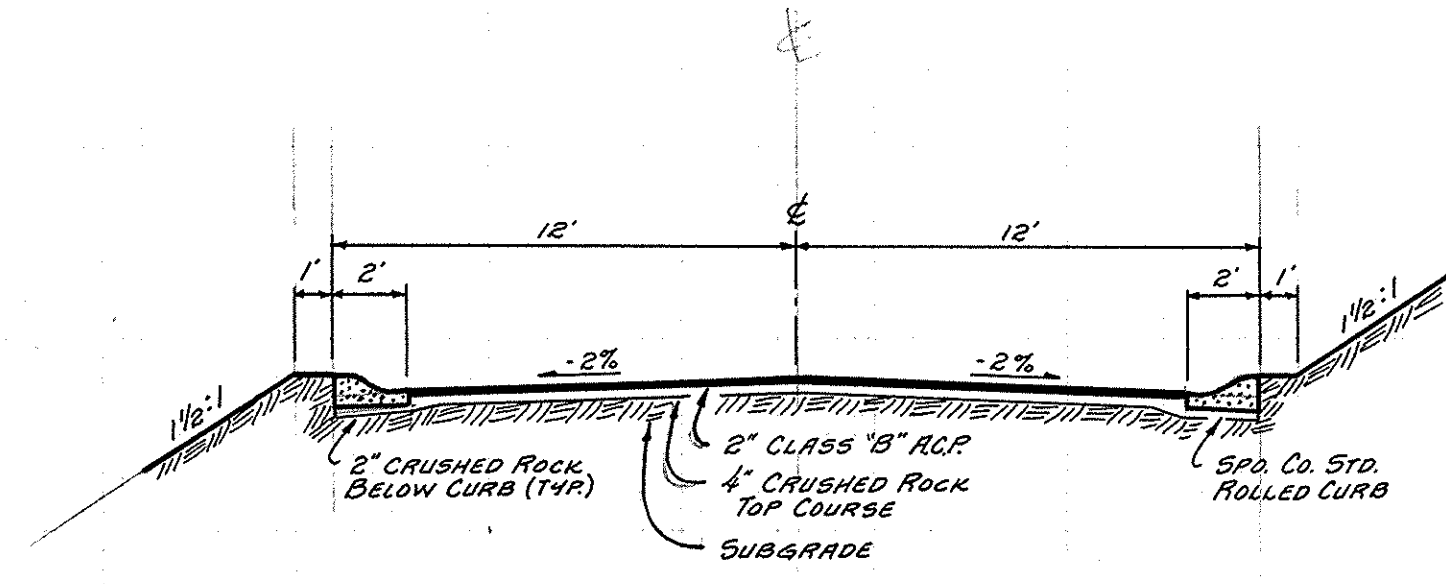


PLAN  
PLAN

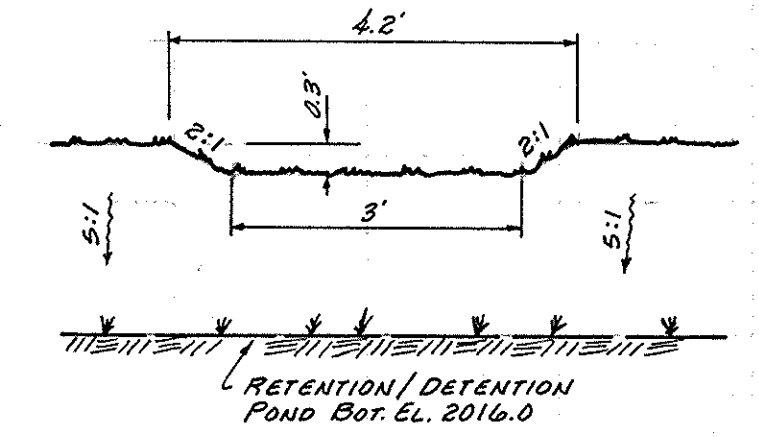


SECTION

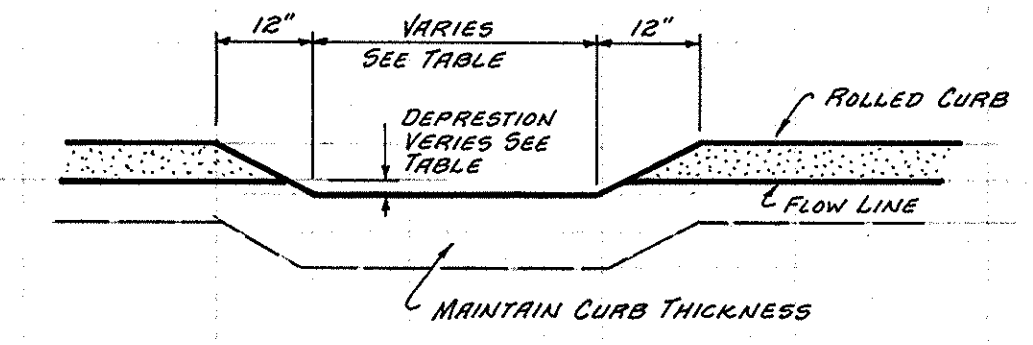
1 CULVERT RIP-RAP DETAIL  
7 N.T.S. N.T.S.



2 TYPICAL STREET SECTION  
7 N.T.S.



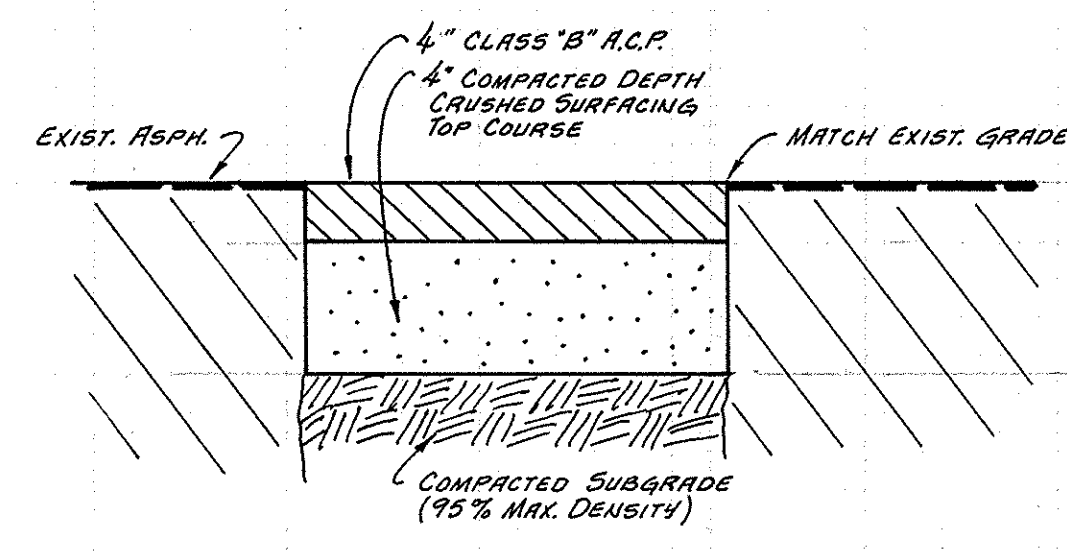
3 OUTLET AND DITCH SECTION FROM RETENTION / DETENTION POND  
7 N.T.S.



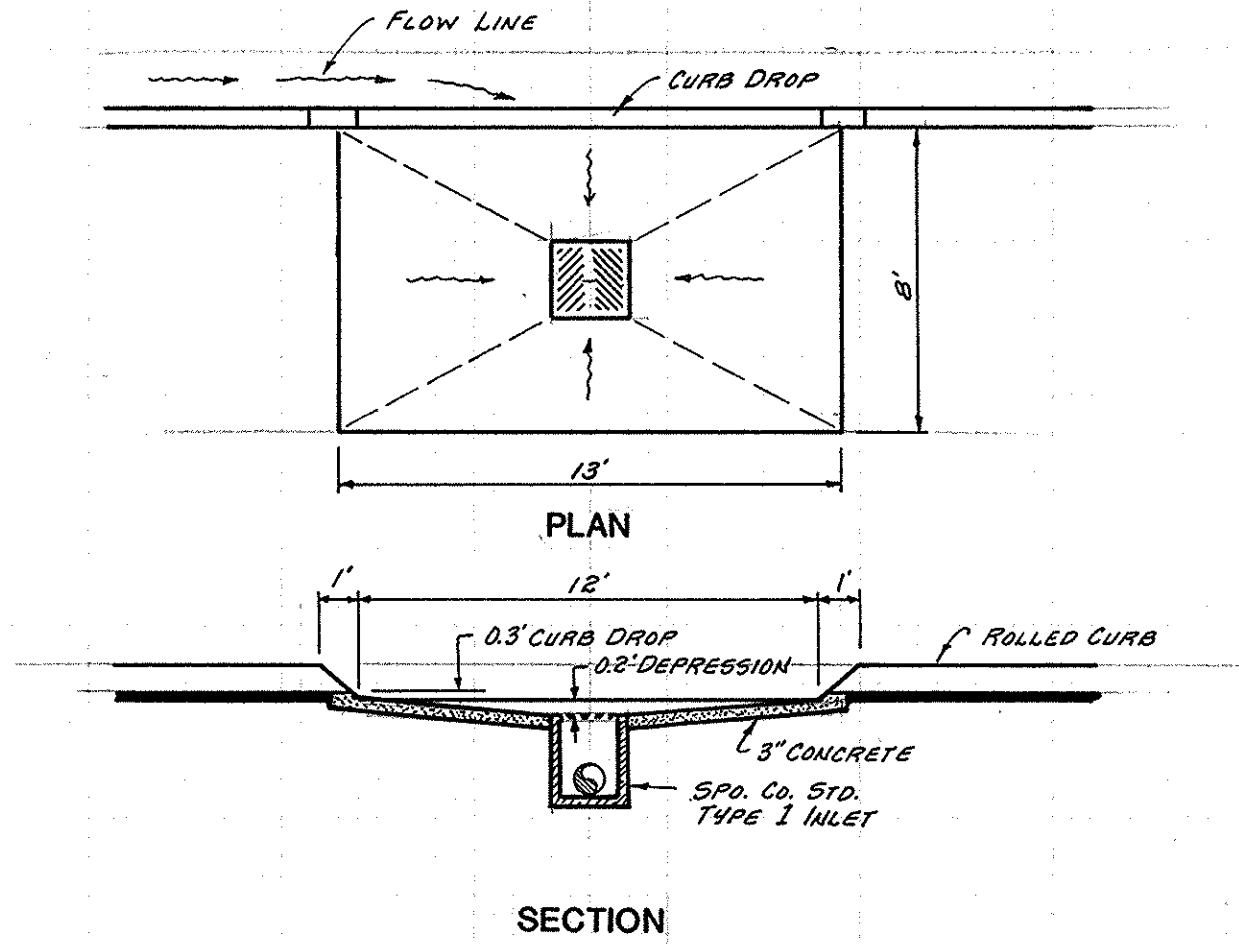
4 CURB DROP DETAIL  
7 N.T.S.

**CURB DROP TABLE**

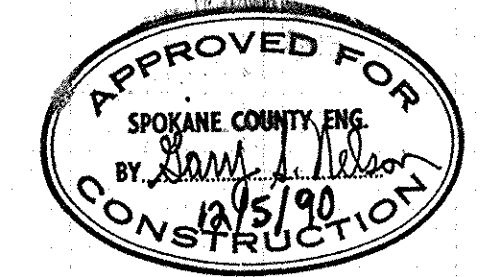
LOCATION	FLOW WIDTH	DEPRESSION
52+00 LT.	1'	0.1'
51+97.7 RT.	1'	0.1'
50+48 LT.	5'	0.2'
50+48 RT.	12'	0.3'



5 REPLACEMENT OF ASPHALT ON 32nd.  
7 N.T.S.



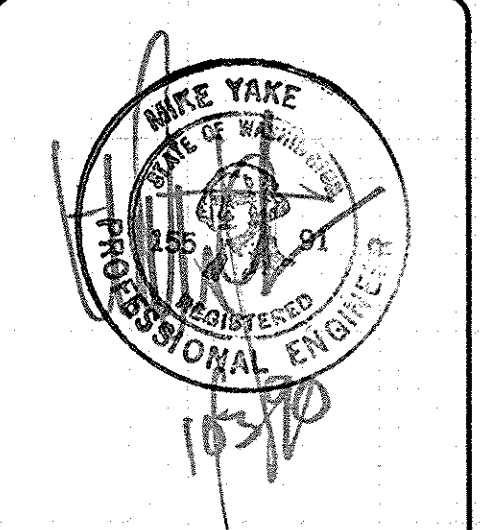
6 CONCRETE INLET DEPRESSION  
7 N.T.S.



**PERMIT REQUIRED!**  
NOTIFY THE PERMIT ENGINEER  
456-3600  
24 HRS. PRIOR TO CONSTRUCTION

PROJECT TITLE:  
LAZY FOX ESTATES

SHEET TITLE:  
CONSTRUCTION DETAILS



Date Drawn: 8-30-90  
Drawn By: D.E.H.  
Designed By: J.L.  
Checked By:  
Field Book No.:  
Sec. 35, T. 25N., R. 44E., W.M.  
Project No.: 90-0422  
Revision: By: Date:

NORTH  
SCALE  
SHEET  
7/17