

Bench Mark - Spokane County Road Datum  
 Elevation 2140.72  
 Spike in pavement on  $\Delta$  North Five Mile Road at sta. 0+00

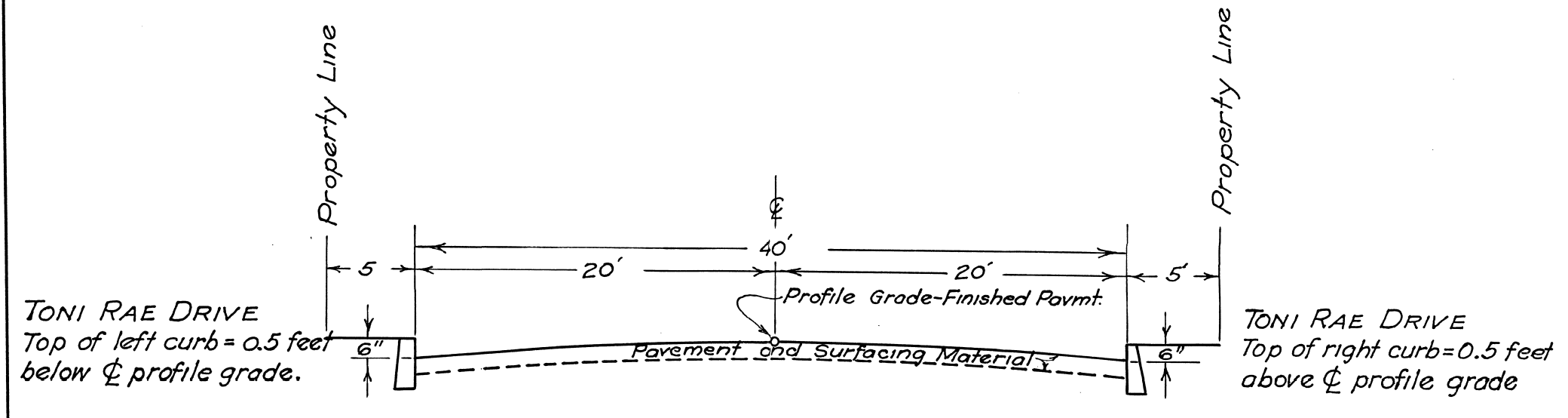
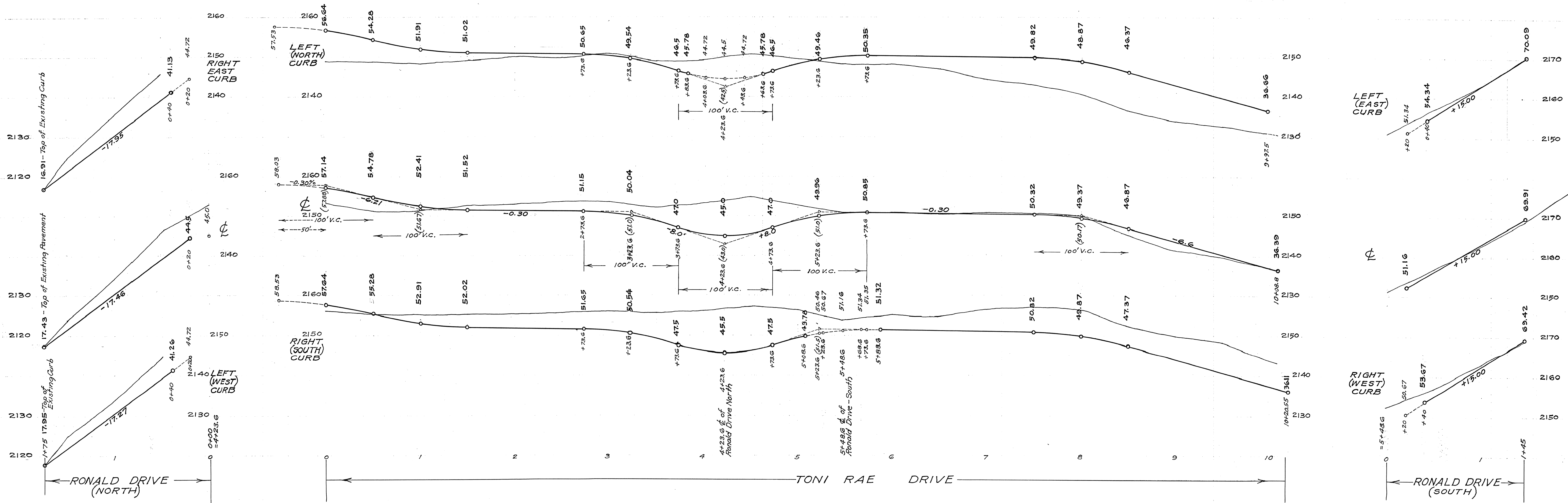
APPROVED  
 Approved \_\_\_\_\_  
 Date \_\_\_\_\_  
 By \_\_\_\_\_

**STREET PLANS  
 TONI RAE DRIVE  
 FOREST HILLS FIRST ADDITION  
 SPOKANE COUNTY WASH.**

Scale -- Plan - 1" = 100'  
 Profile  
 Hor. 1" = 100'  
 Vert. 1" = 6'

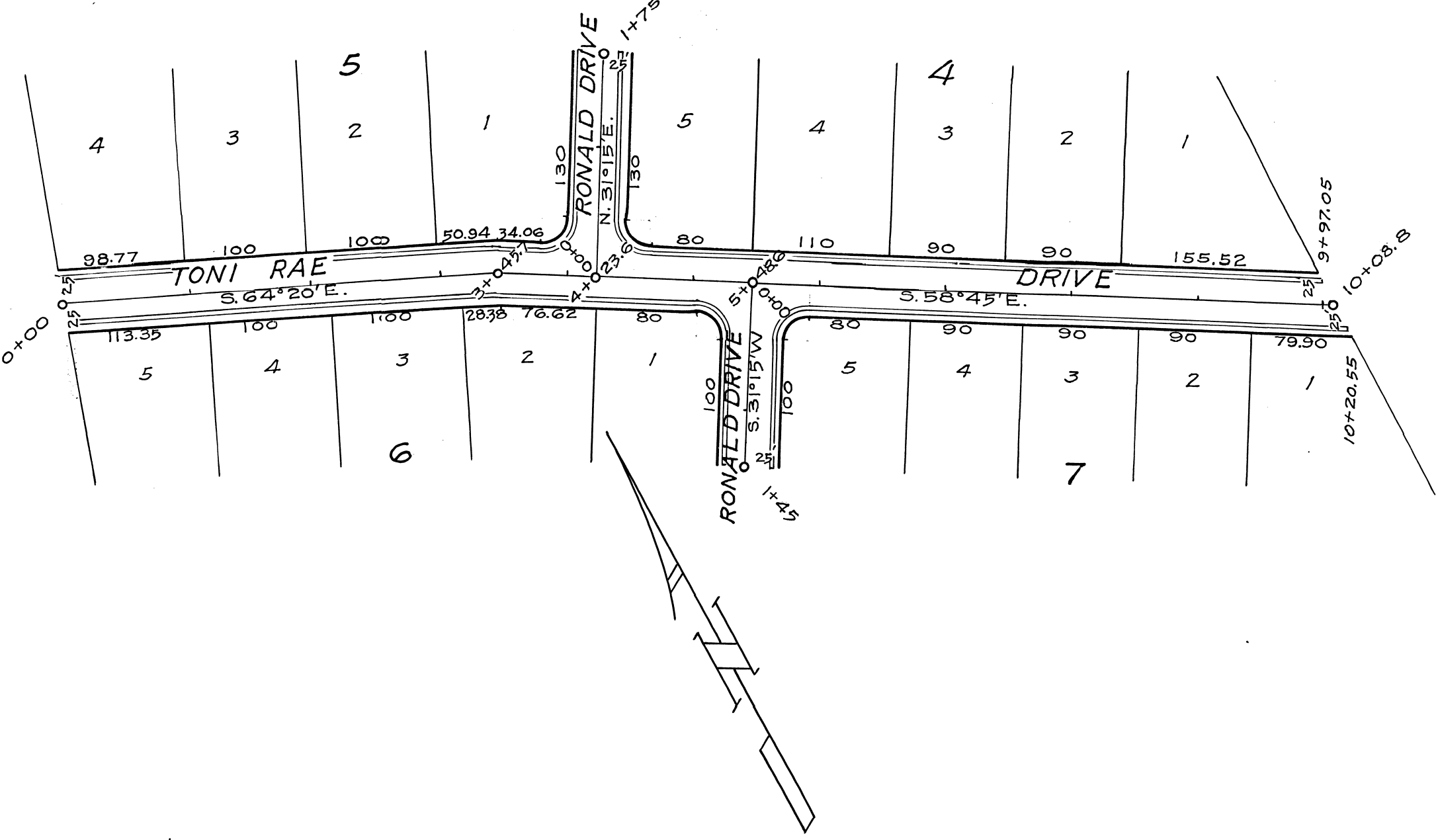
December 14, 1963

PHILIP L. SARGENT  
 Registered Land Surveyor  
 1012 W. Garland Avenue  
 Spokane Washington



TYPICAL STREET SECTION

Bench Mark - Spokane County Road Datum  
 Elevation 2097.00  
 Top of south bolt in fire hydrant at the  
 N.E. corner of Ronald Drive and Ardmore Drive  
 Elevation 2150.00  
 Spike in 8" pine tree at N.E. corner of  
 Ronald Drive and Toni Rae Drive



APPROVED \_\_\_\_\_  
 Approved Date \_\_\_\_\_  
 BY \_\_\_\_\_

STREET PLANS  
 TONI RAE DRIVE  
 RONALD DRIVE  
 FOREST HILLS FIRST ADDITION  
 SPOKANE COUNTY WASH.

Scale: - Plan - 1" = 100'  
 Profile - 1" = 50'  
 Vert. 1" = 12'

December 14, 1963

PHILIP L. SARGENT  
 Registered Land Surveyor  
 1012 W. Garland Avenue  
 Spokane, Washington