

1 OF 1

19-028 P&L STUDY 25x34 CP

DATE: 11/27/2018

PROJECT: ZAKHEIM YOUTH SPORTS COMPLEX

LOCATION: GLENROSE & 37TH, SPOKANE COUNTY, WASHINGTON

PROJECT TITLE: SCHEMATIC SITE PLAN ZAKHEIM YOUTH SPORTS COMPLEX GLENROSE & 37TH SPOKANE COUNTY, WASHINGTON

storhäug
civil engineering | planning
landscape architecture | surveying

330 east third avenue | spokane, wa 99201
509.343.1000 | 509.343.1001

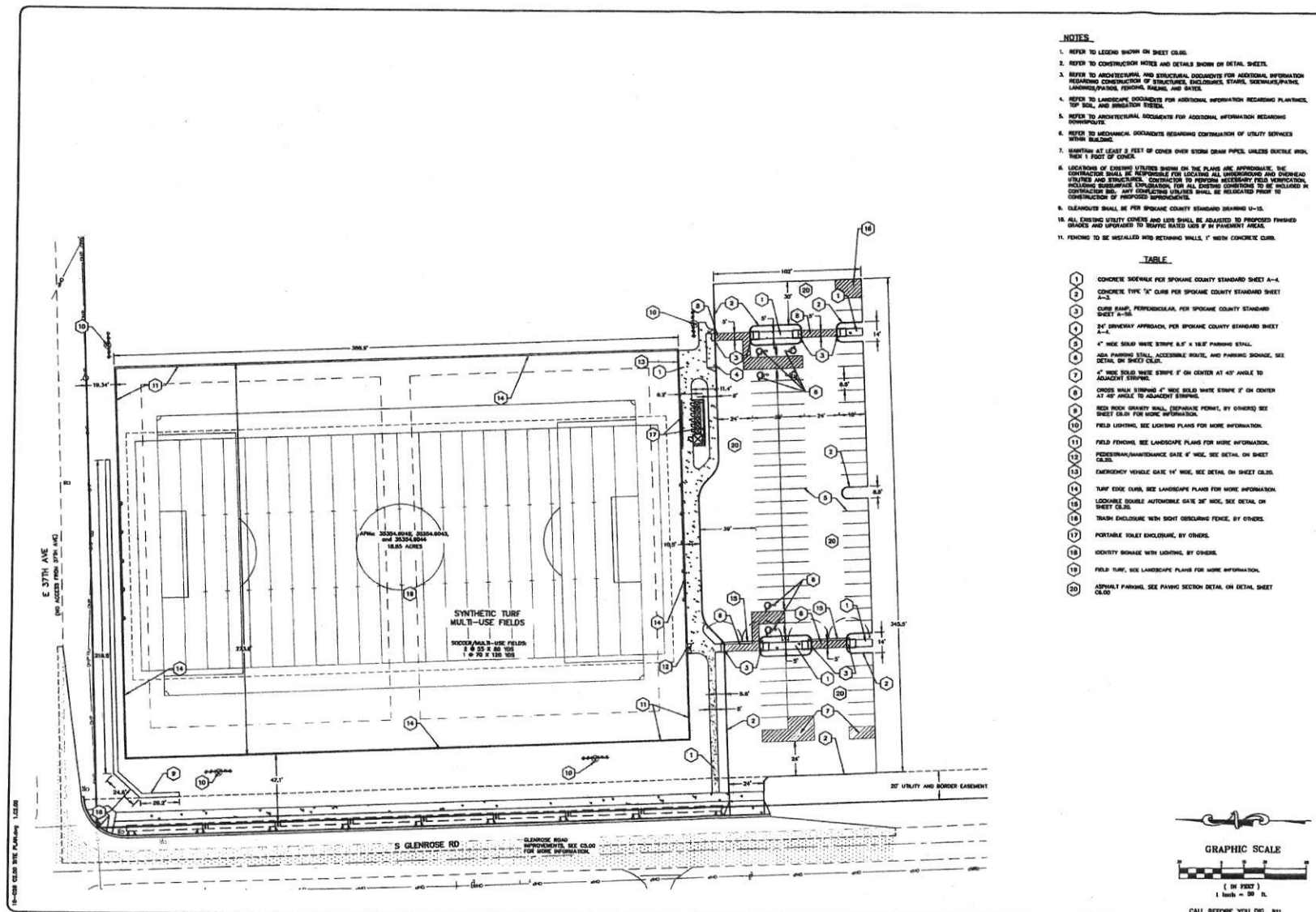
NO.	DATE	BY	REVISION

tabbles

EXHIBIT

D

PHASE 1



- NOTES**
1. REFER TO LEGEND SHOWN ON SHEET C2.01.
 2. REFER TO CONSTRUCTION NOTES AND DETAILS SHOWN ON DETAIL SHEETS.
 3. REFER TO ARCHITECTURAL AND STRUCTURAL DOCUMENTS FOR ADDITIONAL INFORMATION REGARDING CONSTRUCTION OF STRUCTURES, ENCLOSURES, STAIRS, SCREENS/PARTS, LANDSCAPING, FENCING, WALLS, AND SIGNS.
 4. REFER TO LANDSCAPE DOCUMENTS FOR ADDITIONAL INFORMATION REGARDING PLANTINGS, TOP SOIL, AND BIRDBATH SYSTEMS.
 5. REFER TO ARCHITECTURAL DOCUMENTS FOR ADDITIONAL INFORMATION REGARDING CONSTRUCTION.
 6. REFER TO MECHANICAL DOCUMENTS REGARDING CONTRIBUTION OF UTILITY SERVICES WITHIN BUILDING.
 7. MAINTAIN AT LEAST 2 FEET OF COVER OVER STORM DRAIN PIPES UNLESS EXCUTE WITHIN 1 FOOT OF COVER.
 8. LOCATIONS OF EXISTING UTILITIES SHOWN ON THE PLAN ARE APPROXIMATE. THE CONTRACTOR SHALL BE RESPONSIBLE FOR LOCATING ALL UNDERGROUND AND OVERHEAD UTILITIES AND STRUCTURES. CONTRACTOR TO PROVIDE NECESSARY FIELD PROTECTION, INCLUDING SURFACE EMPLOYMENT, FOR ALL EXISTING CONDITIONS TO BE MAINTAINED BY CONTRACTOR. ANY CONDITIONS UNLAWFULLY SHALL BE RELOCATED PRIOR TO CONSTRUCTION OF PROPOSED IMPROVEMENTS.
 9. CLEARCUTS SHALL BE PER SPOKANE COUNTY STANDARD DRAWING U-15.
 10. ALL EXISTING UTILITY COVERS AND LIDS SHALL BE ADJUSTED TO PROPOSED FINISHED GRADES AND ELEVATIONS TO MATCH BASED LIDS IF IN PAVED AREAS.
 11. FENCING TO BE INSTALLED INTO RETAINING WALLS 1' WITH CONCRETE CURB.

TABLE

1	CONCRETE SIDEWALK PER SPOKANE COUNTY STANDARD SHEET A-4.
2	CONCRETE TYPE "C" CURB PER SPOKANE COUNTY STANDARD SHEET A-3.
3	CURB RAMP, PERPENDICULAR, PER SPOKANE COUNTY STANDARD SHEET A-3A.
4	24" DRIVEWAY APPROACH, PER SPOKANE COUNTY STANDARD SHEET A-4.
5	4" WIDE SOLID WHITE STRIPE 8.5' x 18.5' PARKING STALL.
6	ADA PARKING STALL, ACCESSIBLE DRIVE, AND PARKING SIGNAGE, SEE DETAIL ON SHEET C2.01.
7	4" WIDE SOLID WHITE STRIPE 7' ON CENTER AT 45° ANGLE TO ADJACENT STRIPE.
8	CROSS WALK STRIPING 4" WIDE SOLID WHITE STRIPE 7' ON CENTER AT 90° ANGLE TO ADJACENT STRIPE.
9	RED ROCK GRANITE WALL, SEPARATE POINT, BY OTHERS, SEE SHEET C2.01 FOR MORE INFORMATION.
10	FIELD LIGHTING, SEE LIGHTING PLANS FOR MORE INFORMATION.
11	FIELD FENCING, SEE LANDSCAPE PLANS FOR MORE INFORMATION.
12	FENCE/MANTENANCE GATE 4' WIDE, SEE DETAIL ON SHEET C2.01.
13	EMERGENCY VEHICLE GATE 14' WIDE, SEE DETAIL ON SHEET C2.01.
14	TURF EDGE CURB, SEE LANDSCAPE PLANS FOR MORE INFORMATION.
15	LOCKABLE DOUBLE AUTOMOBILE GATE 20' WIDE, SEE DETAIL ON SHEET C2.01.
16	TRASH ENCLOSURE WITH SIGN OBTAINING FENCE, BY OTHERS.
17	PORTABLE TOILET ENCLOSURE, BY OTHERS.
18	IDENTITY SIGNAGE WITH LIGHTING, BY OTHERS.
19	FIELD TURF, SEE LANDSCAPE PLANS FOR MORE INFORMATION.
20	ASPHALT PARKING, SEE PAVING SECTION DETAIL ON DETAIL SHEET C2.01.

DESIGNED BY	
DRAWN BY	
CHECKED BY	
DATE	

storhäug
 civil engineering planning
 landscape architecture
 502 west third avenue | spokane, wa 99201
 p 509.465.2000 | f 509.465.0021

CIVIL SITE PLAN
 ZAKHEM YOUTH SPORTS COMPLEX
 SPOKANE YOUTH SPORTS ASSOCIATION
 SPOKANE COUNTY, WASHINGTON

PRELIMINARY

DATE: 12/06/2018
 DRAWN: LMC
 CHECKED: JDS
 PROJECT NUMBER: 18-028
 DRAWING NO.: 1.C2.00
 SITE

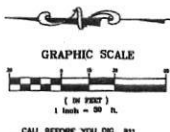


EXHIBIT
6