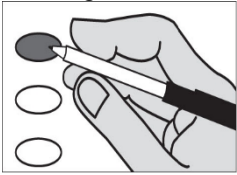


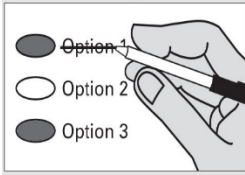
Instructions

Marking Your Ballot



Completely fill in the oval to the left of your choice.
 Use a dark pen.
 Unless specifically allowed by law, more than one vote for a ballot measure will be an overvote and no votes for that office or ballot measure will be counted.

Correcting Your Ballot



If you make a correction, draw a line through the entire response. You then have the option of making another choice if you wish.

In order for your ballot to be counted, it must be either postmarked or deposited at a designated deposit site no later than 8:00 p.m. on Election Day (February 11, 2020). A list of Ballot Drop Box locations is found on the last page of this sample ballot.

Proposition No. 1

**Central Valley School District No. 356
 Supplemental School Programs and Operations Levy**

The Board of Directors of Central Valley School District No. 356 adopted Resolution No. 19-40, concerning a proposition to supplement its school programs and operations levy. This proposition would authorize the District to levy the following excess taxes, in addition to previously authorized excess taxes, upon all taxable property within the District, for support of the District's General Fund to provide for school programs and operations expenses:

<u>Collection Year</u>	<u>Approximate Levy Rates/ \$1,000 Assessed Value</u>	<u>Supplemental Levy Amount</u>
2021	\$1.00	\$11,750,000

all as provided in Resolution No. 19-40. Should this proposition be approved?

- Levy Yes
- Levy No

Proposition No. 1

**East Valley School District No. 361
 Replacement Educational Programs and Operation Levy**

The Board of Directors of East Valley School District No. 361 adopted Resolution No. 2776, concerning a proposition to finance educational programs and operation expenses. This proposition would authorize the District to levy the following excess taxes, replacing an expiring levy, upon all taxable property within the District, for educational programs and operation expenses not funded by the State:

<u>Collection Year</u>	<u>Estimated Levy Rate/ \$1000 Assessed Value</u>	<u>Levy Amount</u>
2021	\$2.50	\$9,945,273
2022	\$2.50	\$10,939,800
2023	\$2.50	\$12,033,780
2024	\$2.50	\$13,237,159

all as provided in Resolution No. 2776 and subject to legal limits on levy rates and amounts at the time of levy. Should this proposition be approved?

- Levy Yes
- Levy No



Proposition No. 2
East Valley School District No. 361
Replacement Capital Levy for Safety, Security and Infrastructure Improvements

The Board of Directors of East Valley School District No. 361 adopted Resolution No. 2777, concerning a proposition for a levy for capital improvements. This proposition would authorize the District to levy the following excess taxes, in place of an expiring levy, upon all taxable property within the District, for District-wide safety, security and infrastructure improvements (including making parking and traffic improvements; making safety, security and communication system improvements; and replacing plumbing, HVAC, roofs and electrical systems):

<u>Collection Year</u>	<u>Estimated Levy Rate/ \$1000 Assessed Value</u>	<u>Levy Amount</u>
2021	\$0.90	\$3,372,941
2022	\$0.90	\$3,566,885

all as provided in Resolution No. 2777. Should this proposition be approved?

- Levy Yes
- Levy No

Proposition No. 1
Newport Consolidated Joint School District No. 26-056
Replacement of Expiring Educational Programs and Operation Levy

The Board of Directors of Newport Consolidated Joint School District NO. 26-056 adopted Resolution No. 01-2019-2020, concerning a proposition to maintain current educational programs and operation. The proposition would authorize the District to levy the following excess taxes, in place of an expiring levy, on all taxable property within the District, for support of the District's General Fund educational programs and operation expenses:

<u>Amount for Collection</u>	<u>Year of Collection</u>	<u>Est. Cost/Thousand</u>
\$1,573,148.00	2021	\$1.78
\$1,606,681.00	2022	\$1.78
\$1,637,634.00	2023	\$1.78

As provided in Resolution 01-2019-2020. Should this proposition be approved?

- Levy Yes
- Levy No

Proposition No. 1
Rosalia School District – 320
Replacement Educational Programs and Operation Levy

The Board of Directors of Rosalia School District No. 320 adopted Resolution No. 2019-08, concerning a proposition to finance educational programs and operation expenses. This proposition would authorize the District to levy the following excess taxes, in place of an expiring levy on all taxable property within the District, for essential educational programs and operation expenses not funded by the State of Washington:

<u>Collection Year</u>	<u>Estimated Levy Rate/ \$1,000 Assessed Value</u>	<u>Levy Amount</u>
2021	\$2.50	\$448,000
2022	\$2.50	\$448,000

all as provided in Resolution No. 2019-08 and subject to legal limits on levy rates and amounts at the time of levy. Should this proposition be approved?

- Levy Yes
- Levy No



Proposition No. 1
St. John School District - 322
Educational Programs and Operation Replacement Levy

The Board of Directors of St. John School District No. 322-JT 401 adopted Resolution No. 20-03, concerning a proposition to finance educational programs and operation expenses. This proposition would authorize the District to levy the following excess taxes, in place of an expiring levy, on all taxable property within the District, for essential educational programs and operation expenses not funded by the State of Washington:

<u>Collection Year</u>	<u>Estimated Levy Rate/ \$1,000 Assessed Value</u>	<u>Levy Amount</u>
2021	\$1.72	\$400,000
2022	\$1.70	\$415,000

all as provided in Resolution No. 20-03 and subject to legal limits on levy rates and amounts at the time of levy. Should this proposition be approved?

- Levy Yes
 Levy No
-

Proposition No. 2
St. John School District - 322
Replacement Capital Levy for Health, Safety and Facilities Improvements

The Board of Directors of St. John School District No. 322-JT 401 adopted Resolution No. 20-04, concerning a proposition to finance health, safety and facilities improvements. This proposition would authorize the District to levy the following excess taxes, in place of an expiring levy, on all taxable property within the District, to make health, safety and facilities improvements at St. John School (including replacing an aging fire alarm system, repairing sidewalks and making other capital improvements):

<u>Collection Year</u>	<u>Estimated Levy Rate/ \$1,000 Assessed Value</u>	<u>Levy Amount</u>
2021	\$1.08	\$250,000
2022	\$1.02	\$250,000

all as provided in Resolution No. 20-04. Should this proposition be approved?

- Levy Yes
 Levy No
-

Proposition No.1
Tekoa School District - 265
Replacement Educational Programs and Operation Levy

The Board of Directors of Tekoa School District No. 265 adopted Resolution No. 02-2020, concerning a proposition to finance educational programs and operation expenses. This proposition would authorize the District to meet the educational needs of its students by levying the following excess taxes, in place of an expiring levy, on all taxable property within the District, for essential educational programs and operation expenses not funded by the State of Washington:

<u>Collection Year</u>	<u>Estimated Levy Rate/ \$1,000 Assessed Value</u>	<u>Levy Amount</u>
2021	\$2.50	\$236,818
2022	\$2.50	\$236,818

all as provided in Resolution No. 02-2020. Should this proposition be approved?

- Levy Yes
 Levy No
-



Proposition No. 2
Tekoa School District - 265
Replacement Capital Levy for Health, Safety and Technology Improvements

The Board of Directors of Tekoa School District No. 265 adopted Resolution No. 03-2020, concerning a proposition for a levy for capital improvements. This proposition would authorize the District to levy the following excess taxes, in place of an expiring levy on all taxable property within the District, to continue funding health, safety and technology improvements (including enhancing security, upgrading roofs, heating, electrical and flooring, and acquiring and installing technology equipment and infrastructure):

<u>Collection Year</u>	<u>Estimated Levy Rate/ \$1,000 Assessed Value</u>	<u>Levy Amount</u>
2021	\$1.50	\$142,090
2022	\$1.50	\$142,090

all as provided in Resolution No. 30-2020. Should this proposition be approved?

- Levy Yes
 Levy No

February 11, 2020 Election Information

Voters may register to vote, update their address, drop off ballots, get replacement ballots, use an Accessible Voting Unit, or receive other assistance as needed at:

Downtown Spokane – Elections Office - 1033 W Gardner Avenue

- January 22 – February 10, 2020: Monday - Friday 8:30 a.m. to 4:00 p.m.
- Election Day February 11, 2020: 7:00 a.m. to 8:00 p.m.

Spokane Valley – CenterPlace Event Center- 2426 N Discovery Place

- February 10, 2020: Monday 8:30 a.m. to 4:00 p.m.
- Election Day February 11, 2020: 7:00 a.m. to 8:00 p.m.

Ballot Drop Boxes are available January 22, 2020 through 8:00 p.m. Election Day at the following locations:

- Argonne Library - 4322 N Argonne Rd
- Downtown Spokane Library - 906 W Main Ave
- Liberty Lake Library – 23123 E Mission Ave
- Millwood City Hall – 9103 E Frederick Ave
- Otis Orchards Library - 22324 E Wellesley Ave
- Spokane Valley Library - 12004 E Main Ave
- STA Plaza - 701 W Riverside Ave
- Spokane County Elections Office - 1033 W Gardner Ave

In order for your ballot to be counted, it must be either postmarked or deposited at a designated deposit site no later than 8:00 p.m. on Election Day (February 11, 2020). If depositing your ballot in a US Postal Service box, postage is prepaid.

Spokane County Elections
1033 W Gardner Ave
Spokane, WA 99260

Online: www.spokanecounty.org/elections
Email: elections@spokanecounty.org
Phone: 509-477-2320

For a list of the people and organizations that donated to ballot measure campaigns, visit www.pdc.wa.gov