

Memorandum

Workshop 2 Results

May 22, 2019
 Exercise Summary



Introduction

On Wednesday, May 22, the second of two public workshops, entitled “Project & Strategy Workshop” was held in support of the Mead-Mt. Spokane Transportation Area Plan. The meeting was held at Colbert Elementary School from 6:00 pm to 8:00 pm. Approximately 55 residents attended and took part in exercises, not including County staff, elected officials or consultants. A copy of the meeting agenda is attached with this memo, along with a copy of the worksheet used in the group activities. A PDF copy of the slideshow/presentation from the meeting is available from County Public Works, along with photos and other materials from the event.

Following a presentation outlining the plan’s scope and the results of the first workshop, the evening’s group activities were introduced, asking small groups (3-6 persons per table) to review 24 recommended projects or studies, indicating general approval, disapproval, or neutral support for each. Groups were also asked to rate each project according to level of urgency, and finally, to select no more than five projects as “top priority” for County implementation. Additional space was provided for groups to write in their own project recommendations, and all were encouraged to make notes and further comments on an adjacent project map.

Upon completion of the worksheets, each group presented their findings and preferences to the larger assembly.

Summary Results – Exercise 1

Ten worksheets were completed or partially completed; all comments were transcribed and are available from Spokane County Public Works staff. The table below presents the total number of indicators circled by the groups, arranged by preference, priority, and “Top Five Choice” columns. Projects receiving the largest numbers of marks by column have been highlighted.

Projects		Preference				Priority				Top 5 Choice
No.	Description	Dislike	Indifferent	Like	No Answer	Low	Medium	High	No Answer2	
1	Freya Street Connection (<i>Lane Park Road to Deer Road</i>)	0	3	5	2	1	4	1	4	2
2	Highland Road Connection (<i>US-2 to Freya</i>)	0	3	5	2	1	3	2	4	2

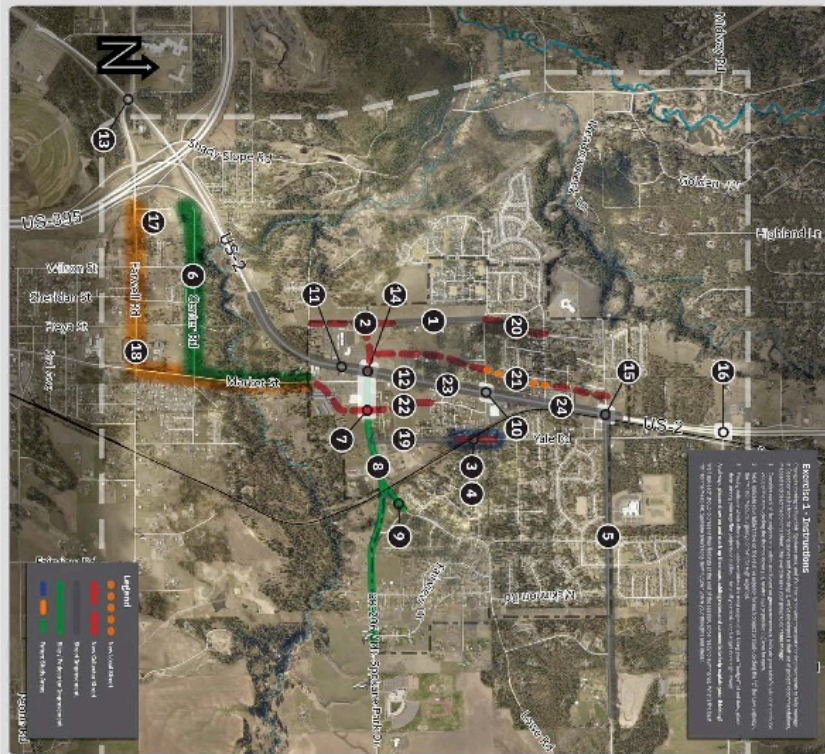
Projects		Preference				Priority				
No.	Description	Dislike	Indifferent	Like	No Answer	Low	Medium	High	No Answer2	Top 5 Choice
3	Yale Road Bike & Ped Bridge	3	0	6	1	2	1	4	3	5
4	Yale Road Street Connection Feasibility Study	1	3	5	1	1	2	3	4	2
5	Safety & Multimodal Improvements (<i>Day Mt. Spokane Road</i>)	2	2	4	2	3	1	3	3	1
6	Bicycle Connection Study (<i>Market Street & Center Road</i>)	0	2	5	3	1	3	2	4	2
7	Market Street to SR-206 Connection	0	0	9	1	0	1	6	3	10
8	Mt. Spokane Park Drive Multi-Use Trail	0	0	6	4	1	1	4	4	1
9	Lowe Road Multi-Use Trail	0	1	5	4	1	3	2	4	1
10	US-2/Lane Park Road Intersection Improvements	1	2	5	2	0	1	6	3	7
11	US 2 Median South of SR-206 (<i>Barrier to prevent left turns</i>)	2	0	4	4	2	1	3	4	1
12	Additional US 2 Left Turn Restrictions	2	2	3	3	3	3	0	4	0
13	Enhanced Safety Improvements at US-2/Farwell	1	1	5	3	2	3	1	4	2
14	Enhanced Safety Improvements at US-2/SR-206	0	1	7	2	1	2	4	3	2
15	Enhanced Safety Improvements at US-2/Day Mt. Spokane	0	1	5	4	1	1	3	5	0
16	Enhanced Safety Improvements at US-2/Greenbluff	0	1	6	3	1	2	2	5	0
17	Park & Ride at US-395 & Farwell	1	2	3	4	3	1	2	4	1
18	Transit Service Extension Study	1	3	3	3	3	1	2	4	1
19	Yale Road Reconstruction	0	2	5	3	0	4	2	4	1
20	Freya Street Connection (<i>Moody Road to Lane Park Road</i>)	2	3	1	4	2	3	1	4	0
21	Medina or Neptune Commercial Access (<i>Day Mt. Spokane to Highland Road</i>)	1	1	4	4	1	2	3	4	2
22	Chris Court to Black Road Connection	1	2	3	4	1	2	3	4	0
23	US-2 Signalized Pedestrian Crossings	1	2	4	3	3	2	2	3	2
24	US-2 Buffered Sidewalks	1	0	6	3	1	3	2	4	1
25	Other (<i>Write-in</i>)	0	0	3	7	0	0	2	8	5
26	Other (<i>Write-in</i>)	0	0	0	10	0	0	0	10	0

As shown above, groups strongly favored Project 7, “Market Street to SR-206 Connection”, which envisions re-directing Market street eastward as it approaches SR-206 in order to provide space between that intersection and the SR-206/US-2 intersection.¹ Project 7 was noted on all worksheets as a top-five priority. The second-most favored project among all

¹ This project was shown on the map in alignment with Project 22, Chris Court to Black Road connection, which may have leveraged additional support.

groups' selections was Project 10, "US-2/Lane Park Road Intersection Improvements", which would address functional and safety concerns at that location. Significant support was also expressed for Project 3, "Yale Road Bike & Ped Bridge", which would span the railroad tracks that now separate north and south segments of Yale Road.

The following page presents a blank copy of the worksheet.



Exercise 1 - Instructions

1. Review the map and identify the project locations. 2. Review the project descriptions and identify the project types. 3. Review the project descriptions and identify the project impacts. 4. Review the project descriptions and identify the project benefits. 5. Review the project descriptions and identify the project risks. 6. Review the project descriptions and identify the project opportunities. 7. Review the project descriptions and identify the project challenges. 8. Review the project descriptions and identify the project solutions. 9. Review the project descriptions and identify the project outcomes. 10. Review the project descriptions and identify the project metrics. 11. Review the project descriptions and identify the project indicators. 12. Review the project descriptions and identify the project outputs. 13. Review the project descriptions and identify the project results. 14. Review the project descriptions and identify the project impacts. 15. Review the project descriptions and identify the project benefits. 16. Review the project descriptions and identify the project risks. 17. Review the project descriptions and identify the project opportunities. 18. Review the project descriptions and identify the project challenges. 19. Review the project descriptions and identify the project solutions. 20. Review the project descriptions and identify the project outcomes. 21. Review the project descriptions and identify the project metrics. 22. Review the project descriptions and identify the project indicators. 23. Review the project descriptions and identify the project outputs. 24. Review the project descriptions and identify the project results.

Project #	Project Name	Project Type	Impact	Benefit	Risk	Opportunity	Challenge	Solution	Outcome	Metric	Indicator	Output	Result
1	Project 1: [Description]	Transportation	+	+	-	+	-	+	+	+	+	+	+
2	Project 2: [Description]	Transportation/Development	+	+	-	+	-	+	+	+	+	+	+
3	Project 3: [Description]	Transportation	+	+	-	+	-	+	+	+	+	+	+
4	Project 4: [Description]	Transportation	+	+	-	+	-	+	+	+	+	+	+
5	Project 5: [Description]	Transportation	+	+	-	+	-	+	+	+	+	+	+
6	Project 6: [Description]	Transportation	+	+	-	+	-	+	+	+	+	+	+
7	Project 7: [Description]	Transportation	+	+	-	+	-	+	+	+	+	+	+
8	Project 8: [Description]	Transportation	+	+	-	+	-	+	+	+	+	+	+
9	Project 9: [Description]	Transportation	+	+	-	+	-	+	+	+	+	+	+
10	Project 10: [Description]	Transportation	+	+	-	+	-	+	+	+	+	+	+
11	Project 11: [Description]	Transportation	+	+	-	+	-	+	+	+	+	+	+
12	Project 12: [Description]	Transportation	+	+	-	+	-	+	+	+	+	+	+
13	Project 13: [Description]	Transportation	+	+	-	+	-	+	+	+	+	+	+

Project #	Project Name	Project Type	Impact	Benefit	Risk	Opportunity	Challenge	Solution	Outcome	Metric	Indicator	Output	Result
14	Project 14: [Description]	Transportation	+	+	-	+	-	+	+	+	+	+	+
15	Project 15: [Description]	Transportation	+	+	-	+	-	+	+	+	+	+	+
16	Project 16: [Description]	Transportation	+	+	-	+	-	+	+	+	+	+	+
17	Project 17: [Description]	Transportation	+	+	-	+	-	+	+	+	+	+	+
18	Project 18: [Description]	Transportation	+	+	-	+	-	+	+	+	+	+	+
19	Project 19: [Description]	Transportation	+	+	-	+	-	+	+	+	+	+	+
20	Project 20: [Description]	Transportation	+	+	-	+	-	+	+	+	+	+	+
21	Project 21: [Description]	Transportation	+	+	-	+	-	+	+	+	+	+	+
22	Project 22: [Description]	Transportation	+	+	-	+	-	+	+	+	+	+	+
23	Project 23: [Description]	Transportation	+	+	-	+	-	+	+	+	+	+	+
24	Project 24: [Description]	Transportation	+	+	-	+	-	+	+	+	+	+	+

Scanned copies of all worksheets are available from the County. Notes from worksheets were transcribed and are copied below, with associative data added for reference.

Table 01

(Project 4) *Bad idea! Traffic speed.*

(Project 5) *Pedestrian bridge for kids.*

(Project 9) *Graffiti needs to be cleaned up.*

(General notes) *1. Street lights to reduce upward light pollution, i.e., lights shine down, protect night sky. 2. Shade trees emphasis along new sidewalks. 3. Attention for possible wildlife corridor (Wow! Great for PR). 4. No BNSF horn zone!*

Table 02

(Project 7) *To include gas station exit to Yokes and Market St. south.*

(Map) *Roundabout.*

(Write-in project) *Way to get from NE Corner of HWY-2 and SR-206 to Market Street.*

(Write-in project) *Roundabout at HWY-2 and Colbert Road.*

Table 03

(Write-in project) *Bruce/Day Mt. Spokane. Hard to make left from Bruce.*

(Write-in project) *Remove curves on US-2; allow longer return lane to Day Mt. Spokane.*

(Write-in project) *Way to get from NE Corner of HWY-2 and SR-206 to Market Street.*

(Write-in project) *Red curb/no parking in front of Colbert; use parking lot.*

Table 04

(Project 2) *No left turns on Deer Road.*

(Project 23) *Pedestrian bridge or tunnel (crossing US-2).*

(Project 11) *Do this at the same time as #7.*

Table 06

(Project 1,2) *Make connector road for housing traffic.*

(Project 3) *Don't spend money on pedestrian crossing. Save for #4 because auto and pedestrian access on Yale is going to alleviate future traffic and existing problem at HWY-2 and 206.*

(Project 5) *Bottle-necking traffic.*

(Project 5) *Need to keep flow; already sidewalks here and pedestrian crossing with light.*

(Project 18) *Transit use on Farwell makes sense, but not up Market because of poor intersection at 206/Market.*

(Map note) *Closed to motor traffic. Bike and pedestrian only.*

(Project 6) *Bike lanes are OK, but don't take road space; add a buffered trail next to the road.*

(Project 7) *Keep flow from going through Yoke's parking lot, so keep it coming around behind.*

(Project 8) *Plenty of space to create/keep four-lane road, plus include bike trail with buffer between cars.*

(Project 10) *Please don't congest HWY-2 by putting in more left-turn barriers!*

(Project 23) *Pedestrian bridge?*

(Project 25) *Suggest four-lane road continues on Day Mt. Spokane to Bruce Road with yield turn lanes. Then, four-lane Bruce Road and improve roundabout to serve four lanes. Also, continue four lanes onto Mt. Spokane Park Drive because you have a bunch of high school traffic making that loop from HWY-2 > Day Mt. Spokane > Bruce > Mt. Spokane.*

(Project 13) *Include a right-hand turn from HWY-2 onto Farwell southbound. There is some empty property there to create a yield lane like all the other directions on that same intersection.*

(Project 26) *Visit traffic issue once Mead Sports Park, down by (project) 18.*

Table 07

(Project 14) *Pedestrian count down.*

(Project 15) *Same as #14.*

(Project 16) *We agree.*

(Project 23) *We want a bridge.*

(Write-in project) *Extend Yale Road to Colbert Road.*

Table 08

(Project 23) *Has a bridge been considered?*

Table 09

(Write-in project) *Closed to motor traffic, bike and pedestrian only!*

(Project 10) *Needs to be (signalized).*

(Write-in project) *Close Lowe Road from Howe to the power lines eastward to motor vehicle traffic. Bike and pedestrian only.*

(Write-in project) *More stop lights, speed should be lower.*

Table 1-

(Misc. comment) *(Misc.) Help Colbert Road!*

(Project 3) *Bike/people bridge a good idea.*

(Project 7) *Need.*

(Project 8) *Yes.*

(Project 24) *Streetscape on HWY-2.*

(Write-in project) *Roundabout or traffic light at Colbert Road/HWY-2.*

Agenda

Public Workshop

May 22, 2019
Colbert Elementary School



Time	Activity
6:00 pm	Welcome, Introductions (<i>Mowery, others</i>)
6:15 pm	Presentation (<i>Breiland, Picard</i>) Slides and materials covering plan background, project scope, review of pressing issues, activity introduction
6:45 pm	Activity 1 – Project & Study Assessment (<i>Participant groups</i>) Project & Study map, value and priority
7:40 pm	Reporting (<i>Participant groups</i>) Result reports, ea. table; facilitated summary
7:50 pm	Wrap up/Adjourn (<i>Staff</i>) <ul style="list-style-type: none">▪ Q/A▪ Next steps

Thank you very much for your participation in this process. Results will help define local desires and objectives for County transportation efforts, shaping project designs and priorities policies for future improvements. Please attend any and all future meetings - times and places will be posted at: <http://www.mead-mtspokane-plan.com/>

Project Contacts:

Spokane County
Kara Mowery, Project Manager
509-477-3600
kmowery@spokanecounty.org

Fehr & Peers
Patrick Picard, Consultant Lead
720-539-72370
p.picard@fehrandpeers.com