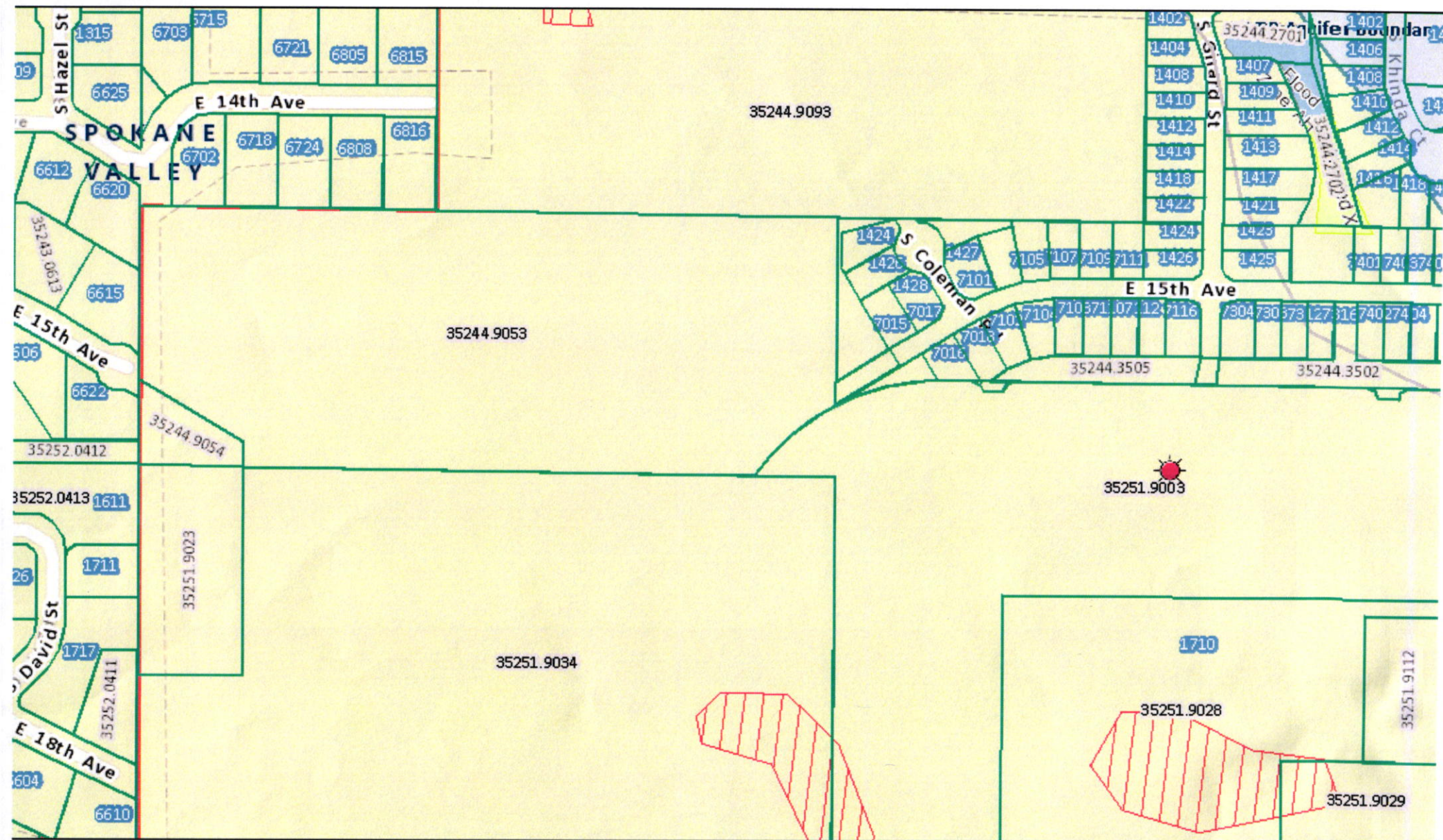
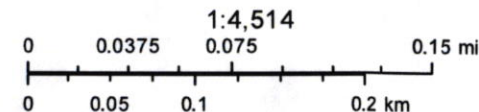


1500 S GIRARD ST - IMPORT & DISPERSION OF 32,000 CU YDS STOCKPILE DIRT



January 18, 2019



Spokane County IT
 Sources: Esri, HERE, Garmin, USGS, Intermap, INCREMENT P, NRCan, Esri Japan, METI, Esri China (Hong Kong), Esri Korea, Esri (Thailand), NGCC, OpenStreetMap contributors, and the GIS User Community

Building and Planning
 This map is a composite of "best available data layers. This map is for reference only. No warranties are expressed or implied.