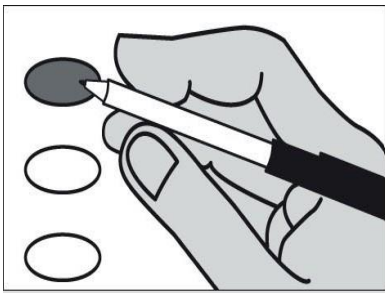


Instructions Marking Your Ballot



Completely fill in the oval to the left of your choice.

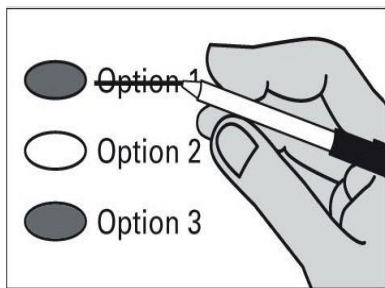
Vote for only one candidate in each contest.

Use a dark blue or black pen.

Unless specifically allowed by law, more than one vote for a contest will be an overvote and no votes for that ballot contest will be counted.

To vote for a candidate whose name is not printed on the ballot, write the name on the line provided and fill in the oval.

Correcting Your Ballot



If you make a correction or mismatch your ballot, draw a line through the entire response. You then have the option of making another choice.

In order for your ballot to be counted, it must be either postmarked or deposited at a designated deposit site no later than 8:00 p.m. on Election Day (August 7, 2018).

For a list of the people and organizations that donated to state and local candidates and ballot measure campaigns, visit www.pdc.wa.gov.

READ: Each candidate for partisan office may state a political party that he or she prefers. A candidate's preference does not imply that the candidate is nominated or endorsed by the party, or that the party approves of or associates with that candidate.

**Federal - Partisan Office
 U.S. Senator
 Six Year Term Vote for One**

- Thor Amundson
(Prefers Independent Party)
- Dave Strider
(Prefers Independent Party)
- Joey Gibson
(Prefers Republican Party)
- Mike Luke
(Prefers Libertarian Party)
- GoodSpaceGuy
(Prefers Republican Party)
- Clint R. Tannehill
(Prefers Democratic Party)
- Maria Cantwell
(Prefers Democratic Party)
- Susan Hutchison
(Prefers Republican Party)
- Brad Chase
(Prefers FDFR Party)
- Tim Owen
(Prefers Republican Party)
- Matthew D. Heines
(Prefers Republican Party)
- Sam Wright
(Prefers The Human Rights Party)
- Art Coday
(Prefers Republican Party)
- John Orlinski
(Prefers Republican Party)
- Charlie R Jackson
(Prefers Independent Party)
- Keith Swank
(Prefers Republican Party)
- Alex Tsimerman
(Prefers StandupAmerica Party)
- RC Smith
(Prefers Republican Party)
- Don L. Rivers
(Prefers Democratic Party)
- Jennifer Gigi Ferguson
(Prefers Independent Party)
- Steve Hoffman
(Prefers Freedom Socialist Party)
- George H. Kalberer
(Prefers Democratic Party)
- James Robert "Jimmie" Deal
(Prefers Green Party)
- Roque "Rocky" De La Fuente
(Prefers Republican Party)
- Jon Butler
(Prefers Independent Party)
- Dave Bryant
(Prefers Republican Party)
- Mohammad Said
(Prefers Democratic Party)
- Matt Hawkins
(Prefers Republican Party)
- Glen R Stockwell
(Prefers Republican Party)
-

**Federal - Partisan Office
 U.S. Representative District 5
 Two Year Term Vote for One**

- Cathy McMorris Rodgers
(Prefers Republican Party)
- Dave Saulbio
(Prefers Trump Populist Party)
- Jered Gavin Bonneau
(Prefers Republican Party)
- Lisa Brown
(Prefers Democratic Party)
- Kari Olavi Ilonummi
(Prefers Republican Party)
-

Legislative District 3 - Partisan Office

**State Representative Pos 1
 Two Year Term Vote for One**

- Marcus Riccelli
(Prefers Democratic Party)
- Tom Taylor
(Prefers Republican Party)
-

**State Representative Pos 2
 Two Year Term Vote for One**

- Dave Lucas
(Prefers Republican Party)
- Timm Ormsby
(Prefers Democratic Party)
-

Legislative District 4 - Partisan Office

**State Representative Pos 1
 Two Year Term Vote for One**

- Ted Cummings
(Prefers Democratic Party)
- Matt Shea
(Prefers Republican Party)
-

**State Representative Pos 2
 Two Year Term Vote for One**

- Mary May
(Prefers Democratic Party)
- Bob McCaslin
(Prefers Republican Party)
-

Continued on Next Page

Legislative District 6 - Partisan Office

State Senator

Four Year Term Vote for One

- Jeff Holy
(Prefers Republican Party)
- Jessa Lewis
(Prefers Democratic Party)

State Representative Pos 1

Two Year Term Vote for One

- Kay Murano
(Prefers Democratic Party)
- Mike Volz
(Prefers Republican Party)

State Representative Pos 2

Two Year Term Vote for One

- Jenny Graham
(Prefers Republican Party)
- Dave Wilson
(Prefers Democratic Party)
- John W. Aiken Jr
(Prefers Republican Party)
- Rion Ametu
(Prefers Democratic Party)

Legislative District 7 - Partisan Office

State Senator

Four Year Term Vote for One

- Shelly Short
(Prefers Republican Party)
- Karen Hardy
(Prefers Democratic Party)

Legislative District 7 - Partisan Office

State Representative Pos 1

Two Year Term Vote for One

- Randall (Randy) Michaelis
(Prefers Democratic Party)
- Jacquelin Maycumber
(Prefers Republican Party)

Legislative District 7 - Partisan Office

State Representative Pos 2

Two Year Term Vote for One

- Joel Kretz
(Prefers Republican Party)
- Crystal Oliver
(Prefers Democratic Party)
- Mike Bell
(Prefers Democratic Party)
- Christine A. Ives
(States No Party Preference)

Legislative District 9 - Partisan Office

State Representative Pos 1

Two Year Term Vote for One

- Jenn Goulet
(Prefers Democratic Party)
- Mary Dye
(Prefers Republican Party)

State Representative Pos 2

Two Year Term Vote for One

- Matthew Sutherland
(Prefers Democratic Party)
- Joe Schmick
(Prefers GOP Party)

Spokane County - Partisan Office

County Commissioner District 2

Two Year Unexpired Term

Vote for One

- Rob Chase
(Prefers Republican Party)
- Mary Kuney
(Prefers Republican Party)

County Commissioner District 3

Four Year Term Vote for One

- Robbi Katherine Anthony
(Prefers Democratic Party)
- Al French
(Prefers GOP Party)

Spokane County

County Assessor

Four Year Term Vote for One

- Leonard Christian
(Prefers Republican Party)
- Tom Konis
(Prefers Republican Party)

County Auditor

Four Year Term Vote for One

- Vicky M. Dalton
(Prefers Democratic Party)

Spokane County

County Clerk

Four Year Term Vote for One

- Tim Fitzgerald
(Prefers Republican Party)
- Michael A. Kirk
(Prefers Democratic Party)

County Prosecuting Attorney

Four Year Term Vote for One

- Larry Haskell
(Prefers Republican Party)

County Sheriff

Four Year Term Vote for One

- Dumpozzi Dot Com
(Prefers Independent Party)
- Ozzie Knezovich
(Prefers Republican Party)

County Treasurer

Four Year Term Vote for One

- Michael Baumgartner
(Prefers Republican Party)
- David Green
(Prefers Democratic Party)

Spokane County - Nonpartisan Office

District Court Judge Position 1

Four Year Term Vote for One

- Lynden P. Smithson
- Randy Arnold Brandt
- Patrick T. Johnson

Continued on Next Page

City of Cheney

Proposition No. 1
City of Cheney
Emergency Medical Services –
Six Year Levy

Shall the City of Cheney be authorized, pursuant to RCW 84.52.069, to renew regular property tax levies upon the taxable property within the City of Cheney at a rate of fifty cents [.50] per thousand dollars of assessed valuation for six consecutive years, commencing in 2018 for collection in 2019 to provide for the uninterrupted continuation of funding for emergency medical services.

Shall this proposition be approved?

- Yes
- No

City of Medical Lake

Proposition No. 1
City of Medical Lake
Emergency Medical Services –
Six Year Replacement Levy

For the purpose of funding emergency medical services pursuant to RCW 84.52.069, shall the City of Medical Lake be authorized to impose additional regular property tax levies upon all the taxable property within the City at the rate of fifty cents (\$.50) per thousand dollars of assessed valuation for six consecutive years, commencing in 2018 for collection in 2019 to replace the expiring levy, as provided in Resolution No. 512 of the City.

Shall this proposition be approved?

- Yes
- No

For this office only: In order to vote for a precinct committee officer, a partisan office, you must affirm that you are a Democrat or a Republican and may vote only for one candidate from the party you select. Your vote for a candidate affirms your affiliation with the same party as the candidate. This preference is private and will not be matched to your name or shared.

Election of Political Party Precinct Committee Officer
Precinct Committee Officer
Two Year Term Vote for One

- I affirm I am a Democrat
- I affirm I am a Republican

If you have questions or need a replacement ballot, please contact Spokane County Elections 1033 W Gardner Ave Spokane WA 99260
Phone: 509-477-2320
Website:
spokanecounty.org/elections Email: elections@spokanecounty.org

Voter Service Centers will be open on election day only from 7:00 a.m. to 8:00 p.m.

Voters may drop off ballots; get replacement ballots; use an Accessible Voting Unit, or receive other assistance as needed on Election Day. For a list of voter service centers please go to spokanecounty.org/elections.

Ballot Drop Box locations are available 20 days prior to Election Day. These are located at public libraries and the STA plaza. For a complete list of locations please go to spokanecounty.org/elections.

In order for your ballot to be counted, it must be either postmarked or deposited at a designated deposit site no later than 8:00 p.m. on August 7, 2018.