



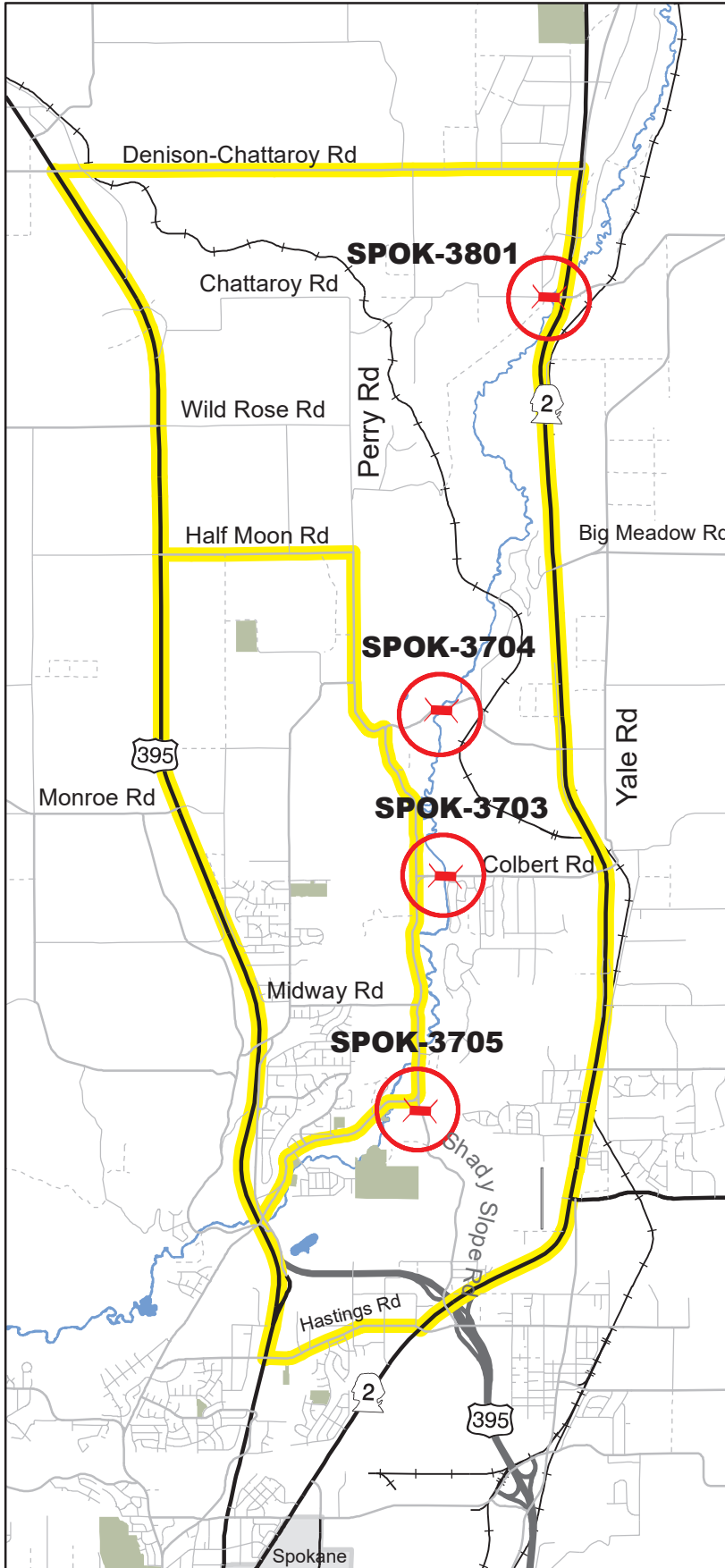
State of Washington

Spokane County Public Works

1026 W Broadway Avenue | Spokane, WA 99260
www.spokanecounty.org/publicworks

Bridge Load Limits Alternate Routes for:

- Chattaroy Rd Bridge No 3801
- Little Spokane Dr Bridge No 3704
- Colbert Rd Bridge No 3703
- Shady Slope Rd Bridge No 3705



Bridge No 3801
Chattaroy Road Bridge over Little Spokane River
 Motor Truck: 18 Tons
 Motor Truck and Semi-Trailer: 27 Tons
 Motor Truck and Trailer: 35 Tons
 4 Axle: 18 Tons | 5 Axle: 19 Tons | 6 Axle: 21 Tons | 7 Axle: 23 Tons

Bridge No 3704
Little Spokane Drive Bridge over Little Spokane River
 Motor Truck: 18 Tons
 Motor Truck and Semi-Trailer: 27 Tons
 Motor Truck and Trailer: 35 Tons
 4 Axle: 16 Tons | 5 Axle: 17 Tons | 6 Axle: 18 Tons | 7 Axle: 18 Tons

Bridge No 3703
Colbert Road Bridge over Little Spokane River
 Motor Truck: 18 Tons
 Motor Truck and Semi-Trailer: 29 Tons
 Motor Truck and Trailer: 36 Tons
 4 Axle: 18 Tons | 5 Axle: 19 Tons | 6 Axle: 21 Tons | 7 Axle: 24 Tons

Bridge No 3705
Shady Slope Road Bridge over Little Deep Creek
 Motor Truck: 23 Tons
 Motor Truck and Semi-Trailer: --Tons
 Motor Truck and Trailer: --Tons
 4 Axle: 22 Tons | 5 Axle: 24 Tons | 6 Axle: 25 Tons | 7 Axle: 28 Tons

Legend:
 Alternate Routes