

# NEWMAN LAKE

## 2016 – 2018 MILFOIL PLAN



Newman Lake Flood Control Zone District

# MILFOIL FUNDING SUMMARY

Funds Spent on Eurasian Milfoil Control  
2003 - 2015 = \$370,866.00

District Funds = \$132,784.00

Grant Funds = \$227,000.00

Private Funds = \$ 11,082.00



June 2015

22 Acre Herbicide Treatment  
North End of Lake

District Funds = \$ 524.00

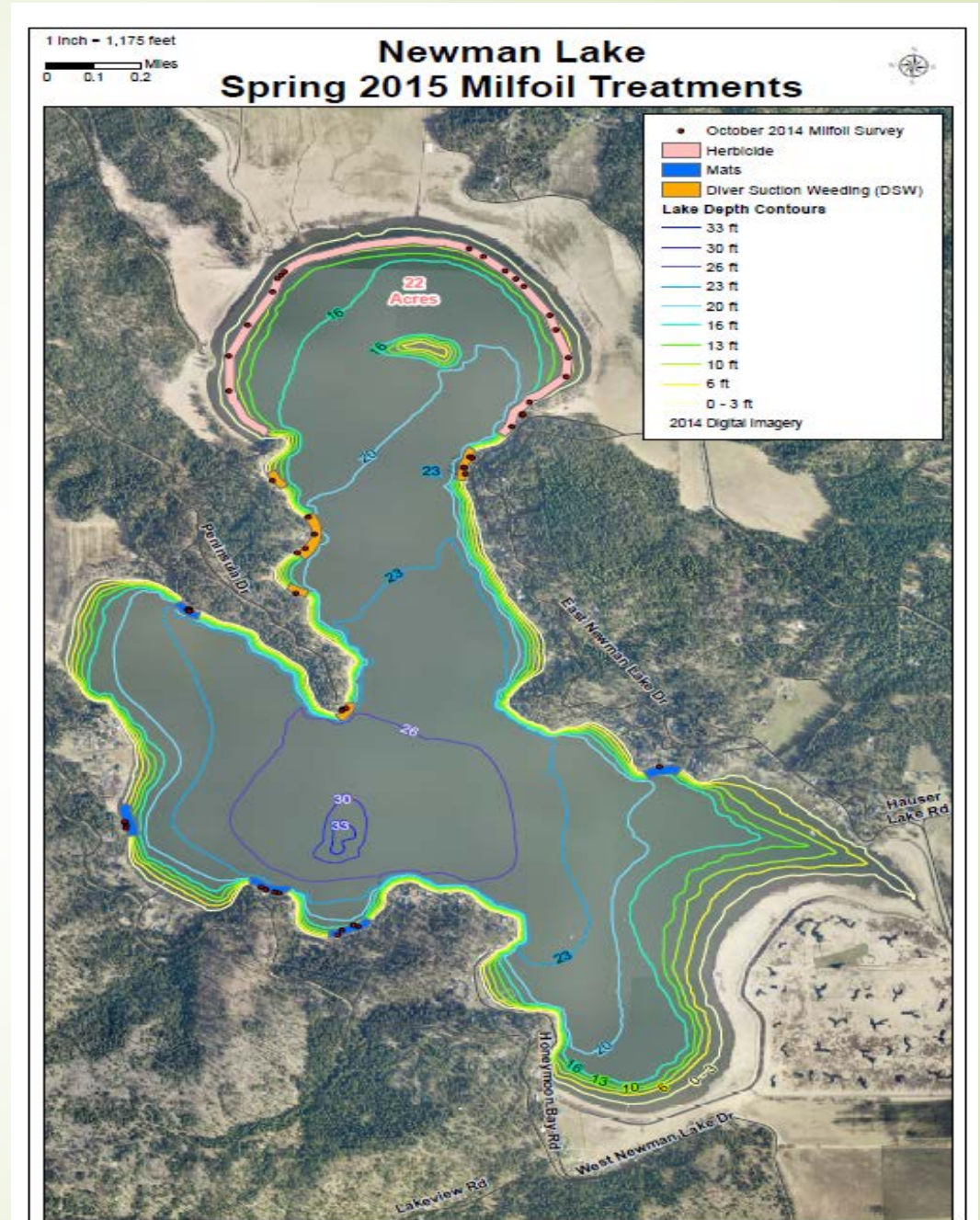
Ecology Grant = \$ 7,538.00

### DNR GRANT FUNDS

Mat Placement = \$2,500.00

Mat Material = \$1,600.00

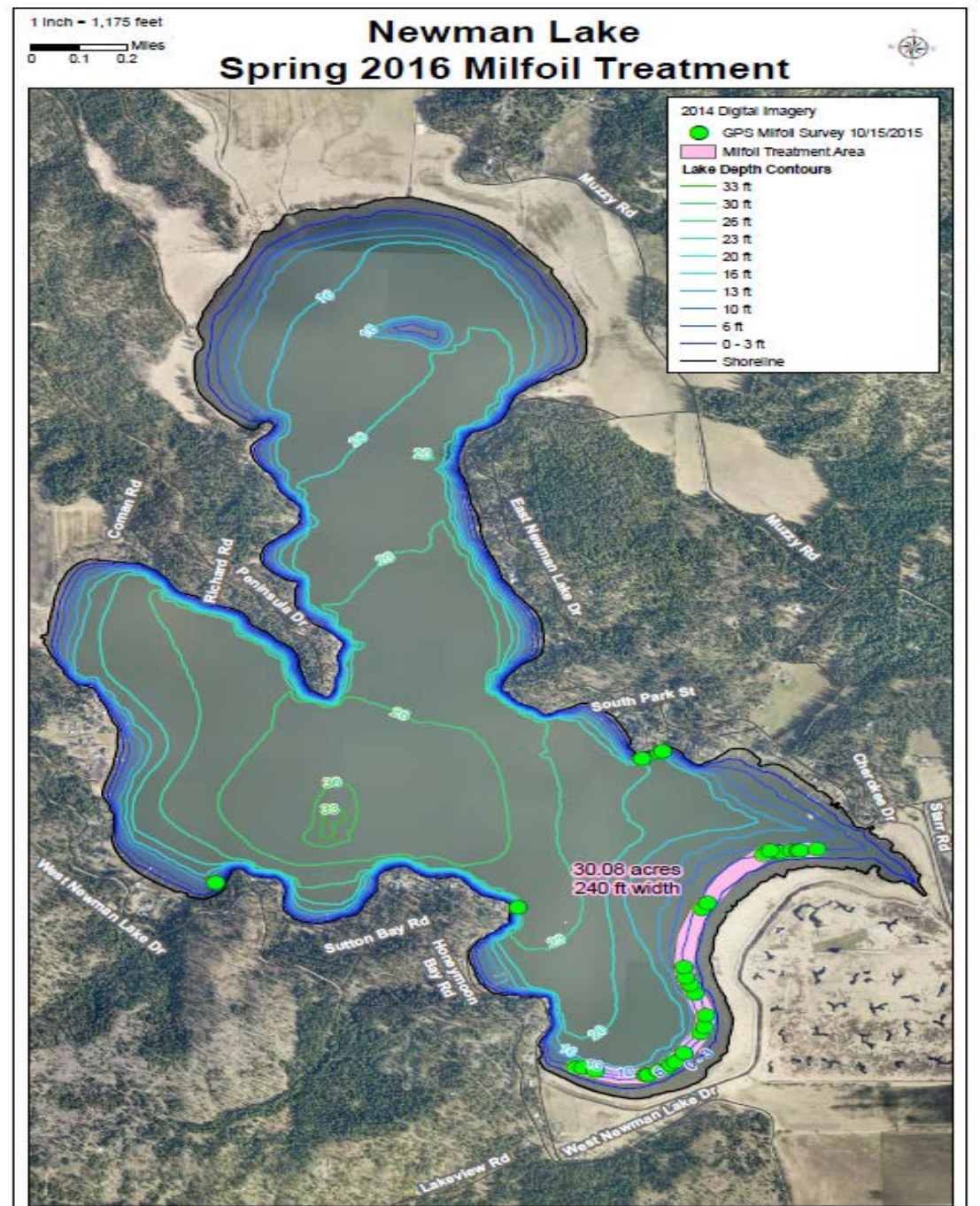
Diver Weeding = \$5,000.00



# June - July 2016

30 Acre Treatment  
South End of Lake  
District Funds = \$10,993.00

Diver Weeding = 20 hours  
Residential Areas  
Small, shallow populations  
To be completed in July 2016



## 2015 Ecology Grant Application \$50,000

Received Grant Award of \$25,000

July 1, 2016 through June 30, 2018

Herbicide Treatments = \$18,250

Alternative Controls = \$ 6,750

Ecology stated they *“will no longer be able to fund Aquatic Weed Management for Newman Lake as in the past”*

District Implementing Adopt-A-Shoreline Program



# 2016 – 2018 MILFOIL PLAN

- **Adopt-A-Shoreline** = Encourage Shoreline Resident Involvement
- **Milfoil Representatives** – Coordinate with District staff and Facilitate private control measures
- **Identify milfoil locations within neighborhoods**
  - Small populations, shallow, dock and swimming areas
- **Choose appropriate control methods**, ensure permitting in place
- **Pool funds** to pay for control method, pay contractor directly.



# 2016 – 2018 MILFOIL PLAN

## HERBICIDE TREATMENTS

- Continue District Funds for control of large acreage populations/north & south shorelines
- Milfoil Representatives/Volunteers  
Encourage private donations for herbicide treatments of large acreages

## ALTERNATIVE CONTROL MEASURES

Control small, shallow milfoil populations around residential docks and swimming areas

- **BOTTOM BARRIER WEED MATS** – Mat material available at no cost to shoreline residents with verified milfoil. Diver charge = \$60.00 to place & remove
- **DIVER SUCTION WEEDING** – Available to communities of shoreline residents who pool/donate funds for invasive species removal. Diver Charge = \$150.00 per hour



Questions?

Contact: Karen Kruger

[kkruger@spokanecounty.org](mailto:kkruger@spokanecounty.org)

(509) 477-7262

