

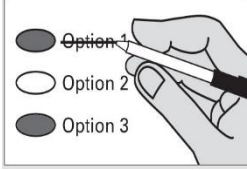
**Instructions**

**Marking Your Ballot**



Completely fill in the oval to the left of your choice. Use a dark pen. Unless specifically allowed by law, more than one vote for a ballot measure will be an over vote and no votes for that office or ballot measure will be counted.

**Correcting Your Ballot**



If you make a correction, draw a line through the entire response. You then have the option of making another choice if you wish. In order for your ballot to be counted, it must be either postmarked or deposited at a designated deposit site no later than 8:00 p.m. on Election Day (February 14, 2017). A list of deposit sites may be found at [www.spokanecounty.org/elections](http://www.spokanecounty.org/elections).

Proposition No. 1  
 Orchard Prairie School District No. 123  
 Replacement Maintenance and Operation Levy

The Board of Directors of Orchard Prairie School District No. 123 adopted Resolution No. 16-01, concerning a proposition to finance maintenance and operation expenses. This proposition would authorize the District to levy the following excess taxes, in place of an expiring levy, upon all taxable property within the District, for support of the District's General Fund maintenance and operation expenses:

<u>Collection Year</u>	<u>Approximate Levy Rate/\$1,000 Assessed Value</u>	<u>Levy Amount</u>
2018	\$1.25	\$115,000
2019	\$1.25	\$115,000

all as provided in Resolution No. 16-01. Should this proposition be approved?

- Levy Yes  
 Levy No

Proposition No. 1  
 Cheney School District No. 360  
 Bonds to Expand and Renovate School Facilities and Improve Security

The Board of Directors of Cheney School District No. 360 adopted Resolution No. 7-16-17 concerning a proposition to relieve overcrowding and improve infrastructure and security. This proposition would authorize the District to: expand and renovate Cheney High School, Sunset Elementary School, Windsor Elementary School and Betz Elementary School; make security improvements to such schools and to Salnave Elementary School; acquire land; relocate the Three Springs High School portables; issue no more than \$52,000,000 of general obligation bonds maturing within 21 years; and levy annual excess property taxes to repay the bonds, all as provided in Resolution No. 7-16-17. Should this proposition be:

- Approved  
 Rejected

Proposition No. 1  
 Rosalia School District  
 Capital Levy For Safety, Security and Infrastructure Improvements

The Board of directors of Rosalia School District No. 320 adopted Resolution No. 2016-05, concerning a proposition for a levy for capital improvements. This proposition would authorize the District to levy the following excess taxes, on all taxable property within the district, to make safety, security and infrastructure improvements at Rosalia Schools (including acquiring security cameras; upgrading bathroom, fire alarm, phone and sever systems; replacing HVAC and windows; and installing a new Ag Shop roof):

<u>Collection Year</u>	<u>Approximate Levy Rate per \$1000 Assessed Value</u>	<u>Levy Amount</u>
2018	\$1.14	\$200,000
2019	\$1.14	\$200,000
2020	\$1.14	\$200,000

- Yes  
 No

Proposition No. 1  
Newport Consolidated Joint School District No. 26-056  
Replacement of Expiring Educational Programs and Operation Levy

The Board of Directors of Newport Consolidated Joint School District NO. 26-056 adopted Resolution No. 01-2016-2017, concerning a proposition to maintain current educational programs and operation. The proposition would authorize the District to levy the following excess taxes, in place of an expiring levy, on all taxable property within the District, for support of the District's General Fund educational programs and operation expenses:

<u>Amount for Collection</u>	<u>Year of Collection</u>	<u>Est. Cost/Thousand</u>
\$1,734,445.00	2018	\$2.09
\$1,760,445.00	2019	\$2.09
\$1,786,945.00	2020	\$2.09

As provided in Resolution 01-2016-2017. Should this proposition be approved?

- Levy Yes  
 Levy No
- 

Proposition No. 1  
Rosalia Park & Recreation District #5

Shall the Rosalia Park & Recreation District #5 be authorized to impose a special (excess) tax levy of \$0.41 per thousand dollars of assessed valuation, to be collected in the year 2018, in order to collect \$72,000.00 for the Rosalia Park & Swimming Pool, to help defray the costs of operation and maintenance?

Should this proposition be approved?

- Yes  
 No
- 

**Voter Service Centers will be open on Election Day (February 14) only from 7:00 a.m. to 8:00 p.m.** Voters may drop off ballots; get replacement ballots; use an Accessible Voting Unit, or receive other assistance as needed on Election Day.

Downtown Spokane - Elections Office - 1033 W Gardner Ave ; West Plains – Cheney Library – 610 First St

**Ballot Drop Box locations are available 20 days prior to Election Day**

**Airway Heights Library** – 1213 S Lundstrom St; **Argonne Library** - 4322 N Argonne Rd;

**Cheney Library** – 610 First St.; **Elections Office** -1033 W Gardner Ave; **Moran Prairie Library** - 6004 S Regal St;

In order for your ballot to be counted, it must be either postmarked or deposited at a designated deposit site no later than 8:00 p.m. on Election Day (February 14, 2017). If depositing your ballot in a US Postal Service box, you must include first class postage (\$0.49). **The Elections Office is open from 8:30 a.m. to 4:00 p.m. weekdays** to answer questions; get replacement ballots; use an Accessible Voting Unit, or receive other assistance as needed.

Spokane County Elections 1033 W Gardner Ave Spokane WA 99260  
509-477-2320 website: [www.spokanecounty.org/elections](http://www.spokanecounty.org/elections) email: elections@spokanecounty.org

**For a list of the people and organizations that donated to ballot measure campaigns, visit [www.pdc.wa.gov](http://www.pdc.wa.gov)**