

Legend

- Average Baseflow
- Instream Flow Requirements
- 1959 - Average Year
- 1968 - Dry Year

POR 1949-1971, Surrogate data used for Average and Dry Year
 Note: Baseflow not computed during spring thaw (March through June)

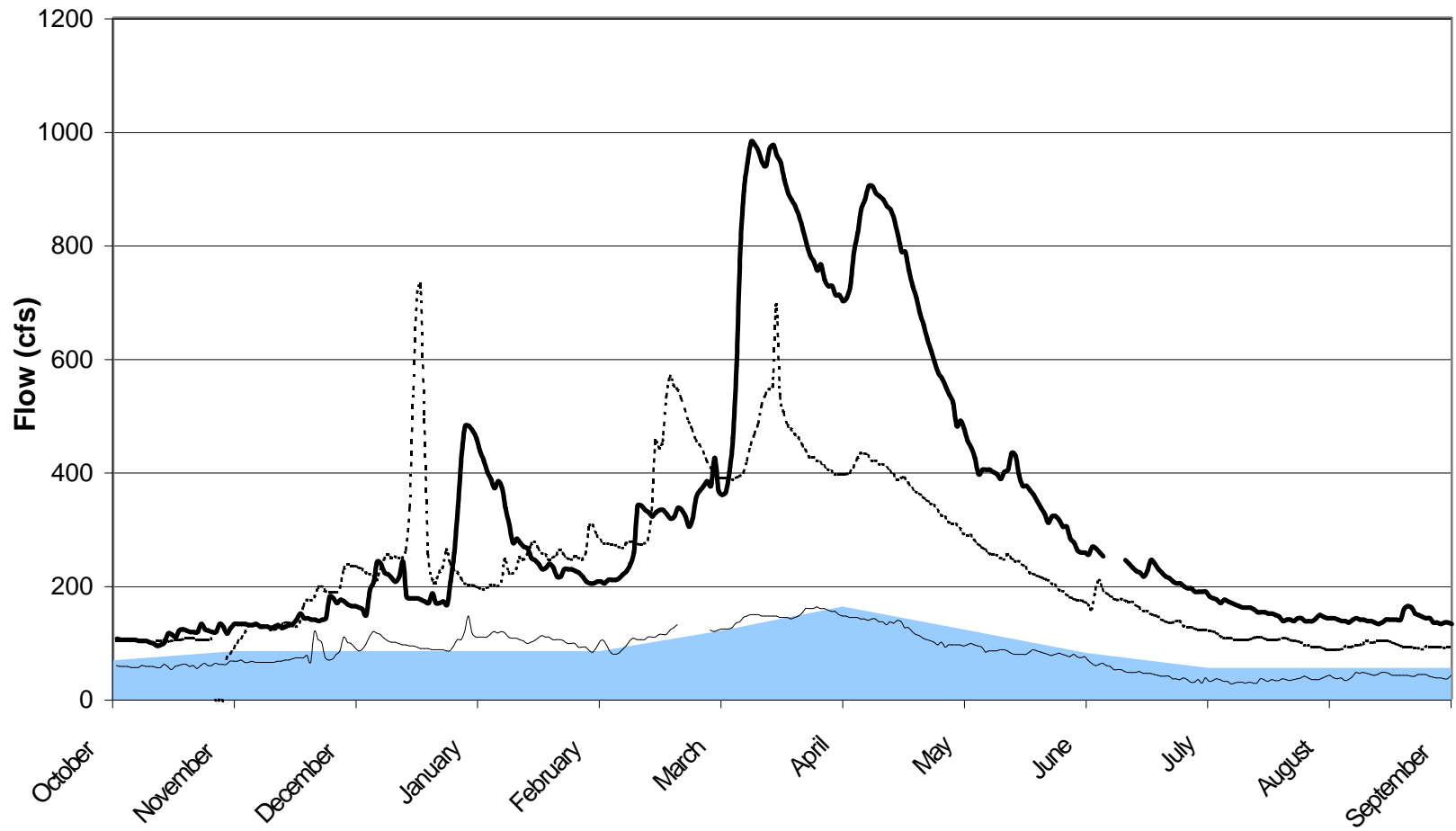
FIGURE 5.7a:

Little Spokane River At Elk, WA (USGS stn. 12427000)

Spokane County
 Watershed Assessment

013-1392, id143graphs.xls, 10/07/2001





Legend

Instream Flow Requirements

1994 - Dry Year

1999 - Average Year

1997 - Wet Year

POR 1976 - present

Note: Baseflow estimates not available for this gage

FIGURE 5.7b:

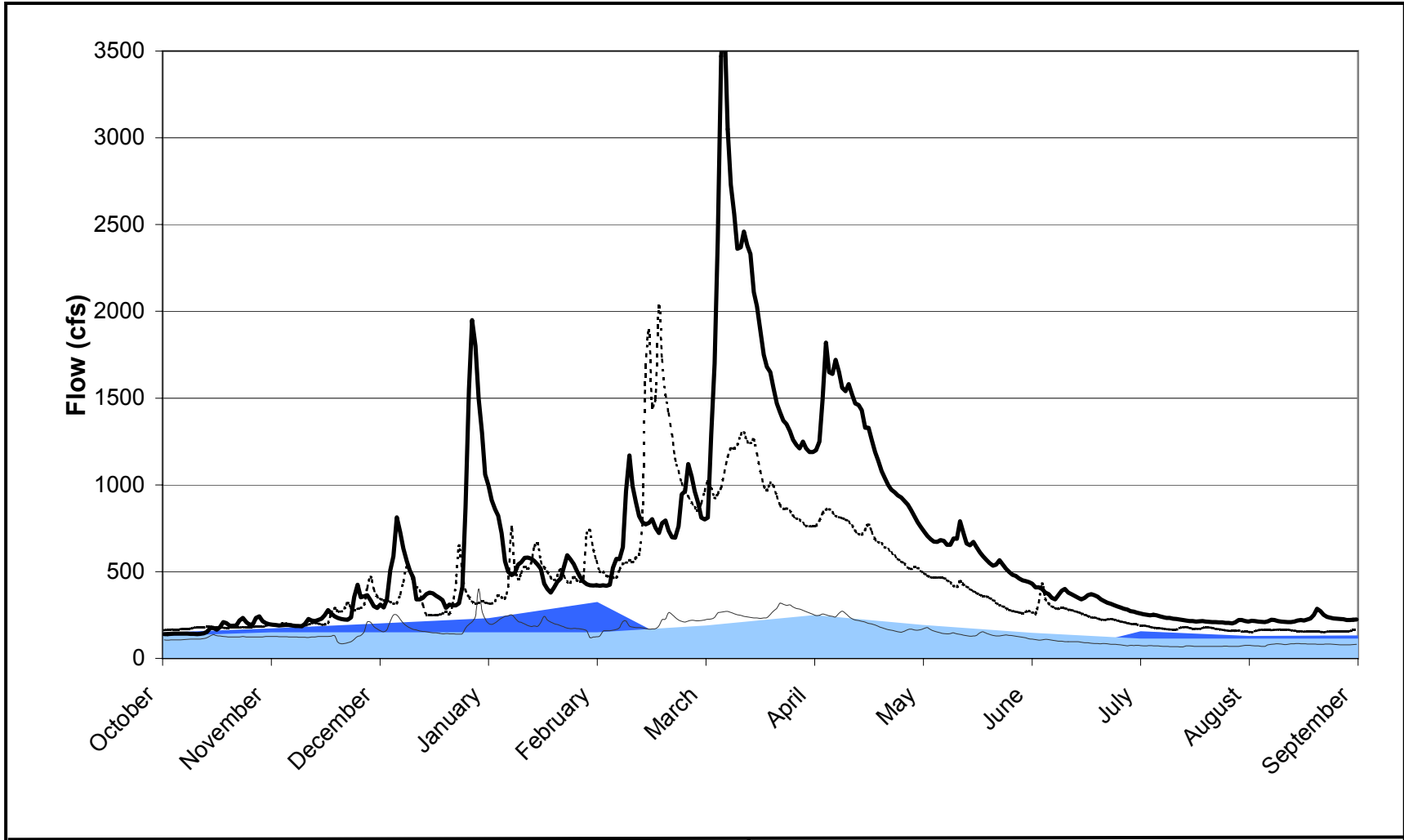
**Little Spokane River, Chattaroy Rd.,
Chattaroy, WA (SCC 001)**

Spokane County

Watershed Assessment

013-1392_id147_graphs.xls_07/23/2001





Legend

- Average Baseflow
- Instream Flow Requirements
- 1997 - Wet Year
- 1999 - Average Year
- 1994 - Dry Year

POR 1930 - 1932, 1948 - 1999.

Note: Baseflow not computed during spring thaw (March through June)

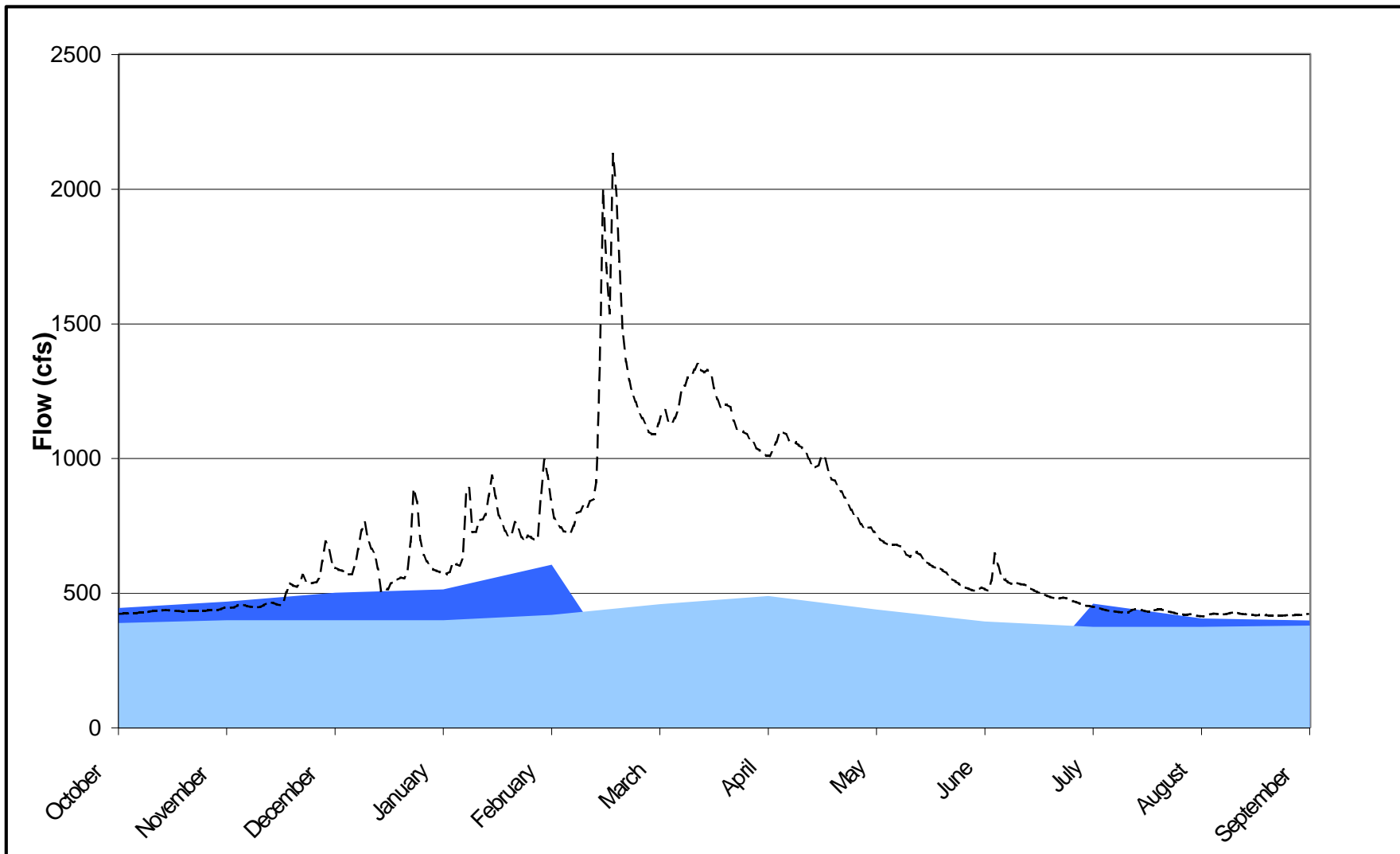
FIGURE 5.7c:

Little Spokane River at Dartford, WA (USGS gage 12431000)

Spokane County
Watershed Assessment

013-1392, id142 graphs.xls, 07/23/2001





Legend

- Average Baseflow
- Instream Flow Requirements
- 1999 - Average Year

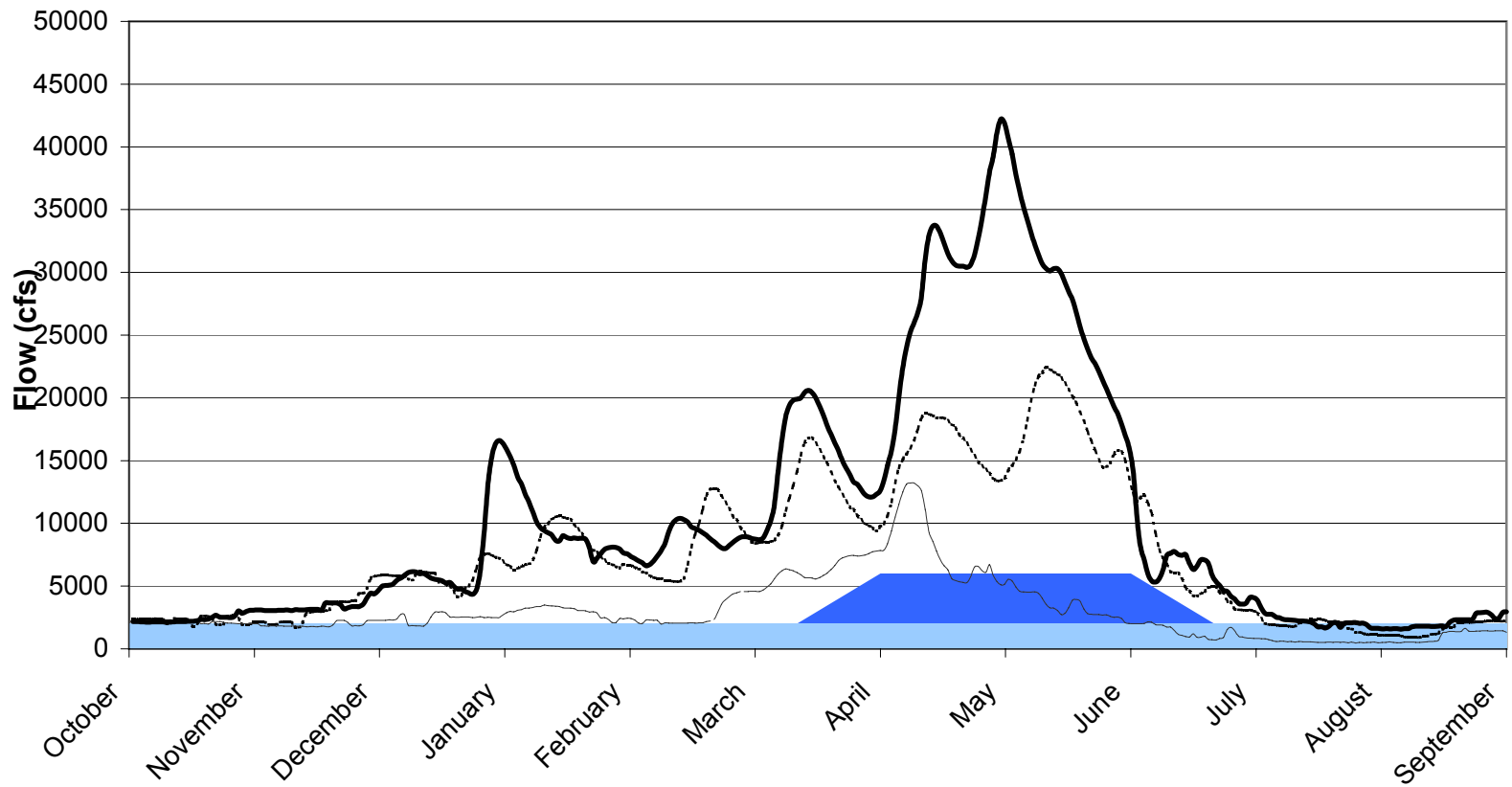
POR: 1949-1951, 1998-1999
 Note: Baseflow not computed during spring thaw (March through June).
 Instream Flows are for Confluence Control Point downstream of this gage.

FIGURE 5.7d:
 Little Spokane River Near Dartford, WA (USGS gage 12431500)

Spokane County
 Watershed Assessment

013-1392, id146 graphs.xls, 07/23/2001





Legend

- Suggested Instream Flows (1988 Report, WDFW)
- Suggested Instream Flow (1999 Ltr, WDFW)
- 1999 - Average Year
- 1994 - Dry Year
- 1997 - Wet Year

POR 1892-1999

Note: Estimated baseflow data not available for this gage

FIGURE 5.7e:

Spokane River At Spokane WA (USGS gage 12422500)

Spokane County
Watershed Assessment

013-1392, id169 graphs.xls, 07/24/2001

