

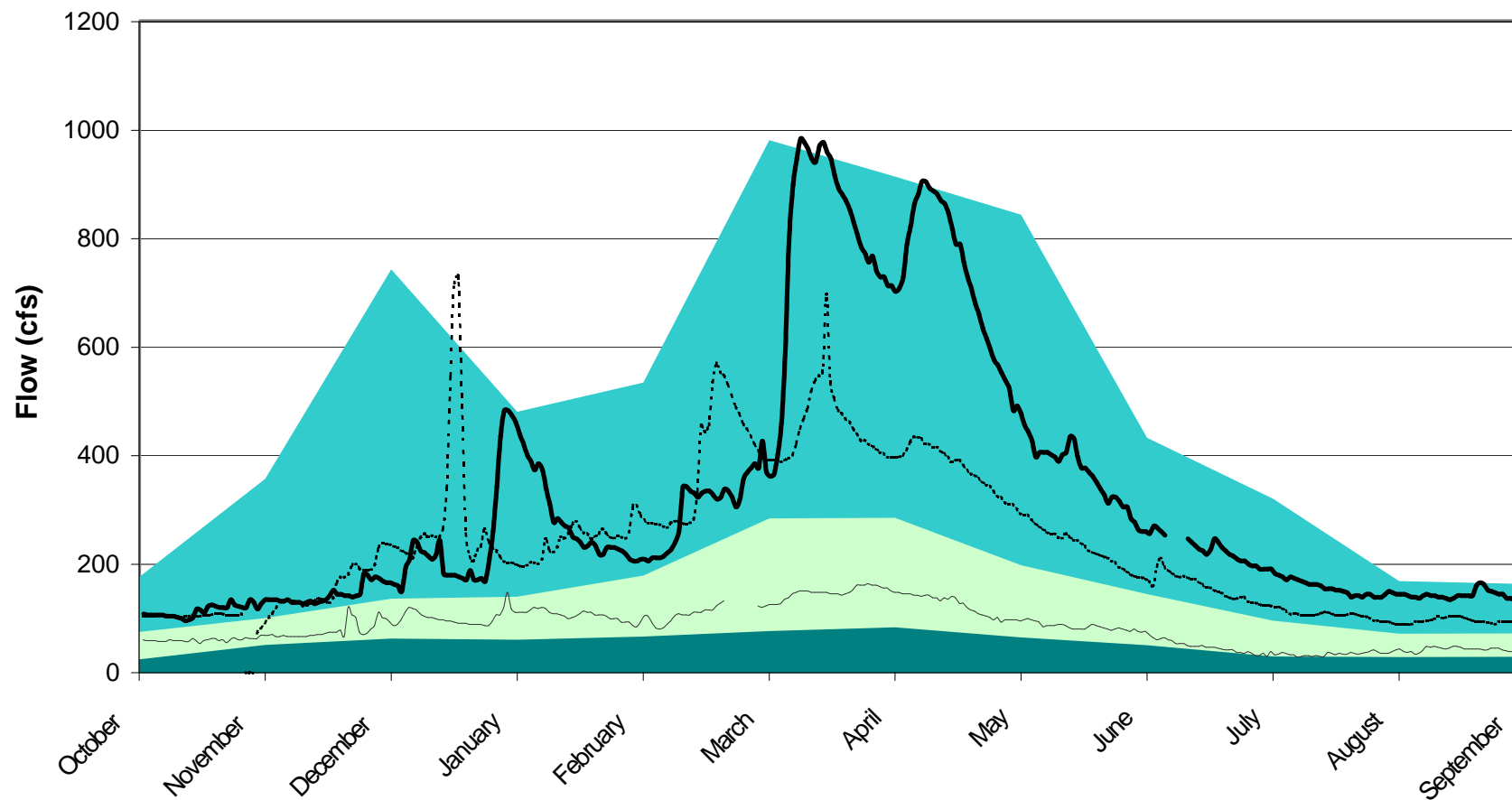
Legend

- Max Recorded Daily Flow
- Average Daily Flow
- Min Recorded Daily Flow
- 1968 - Dry Year
- 1959 - Average Year

FIGURE 5.5a:
Little Spokane River At Elk, WA (USGS stn. 12427000)
 Spokane County
 Watershed



POR 1949-1971. Surrogate year used for Average and Dry year data



Legend

- Max Recorded Daily Flow
- Average Daily Flow
- Min Recorded Daily Flow
- 1994 - Dry Year
- 1999 - Average Year
- 1997- Wet Year

POR 1976 - present

FIGURE 5.5b:

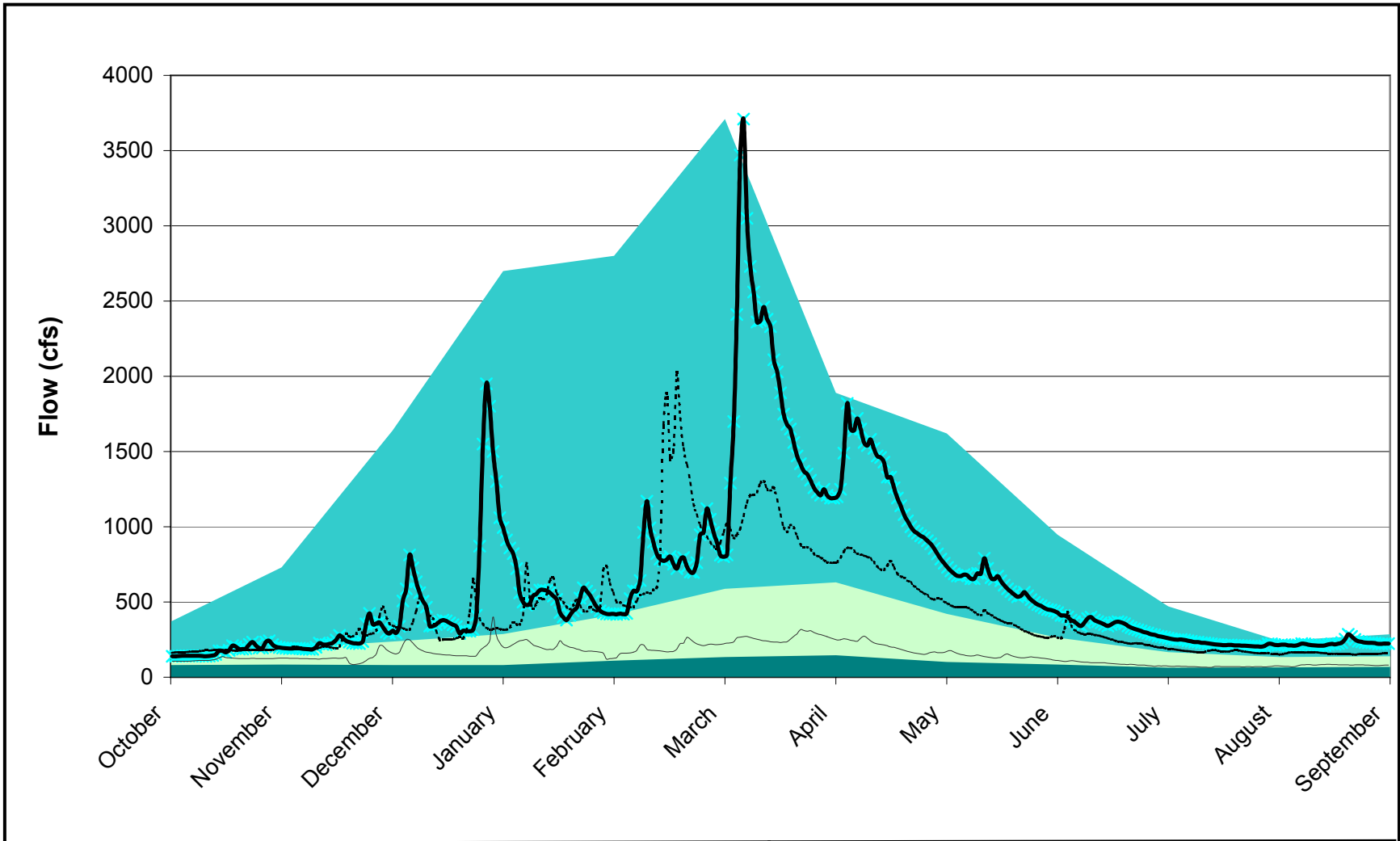
Little Spokane River, Chattaroy Rd., Chattaroy, WA (SCC 8327Q)

Spokane County

Watershed Assessment

013-1392, id147 graphs.xls, 08/09/2001





Legend

- Max Recorded Daily Flow
- Average Daily Flow
- Min Recorded Daily Flow
- 1997 - Wet Year
- 1999 - Average Year
- 1994 - Dry Year

POR 1930 - 1932, 1948 - 1999

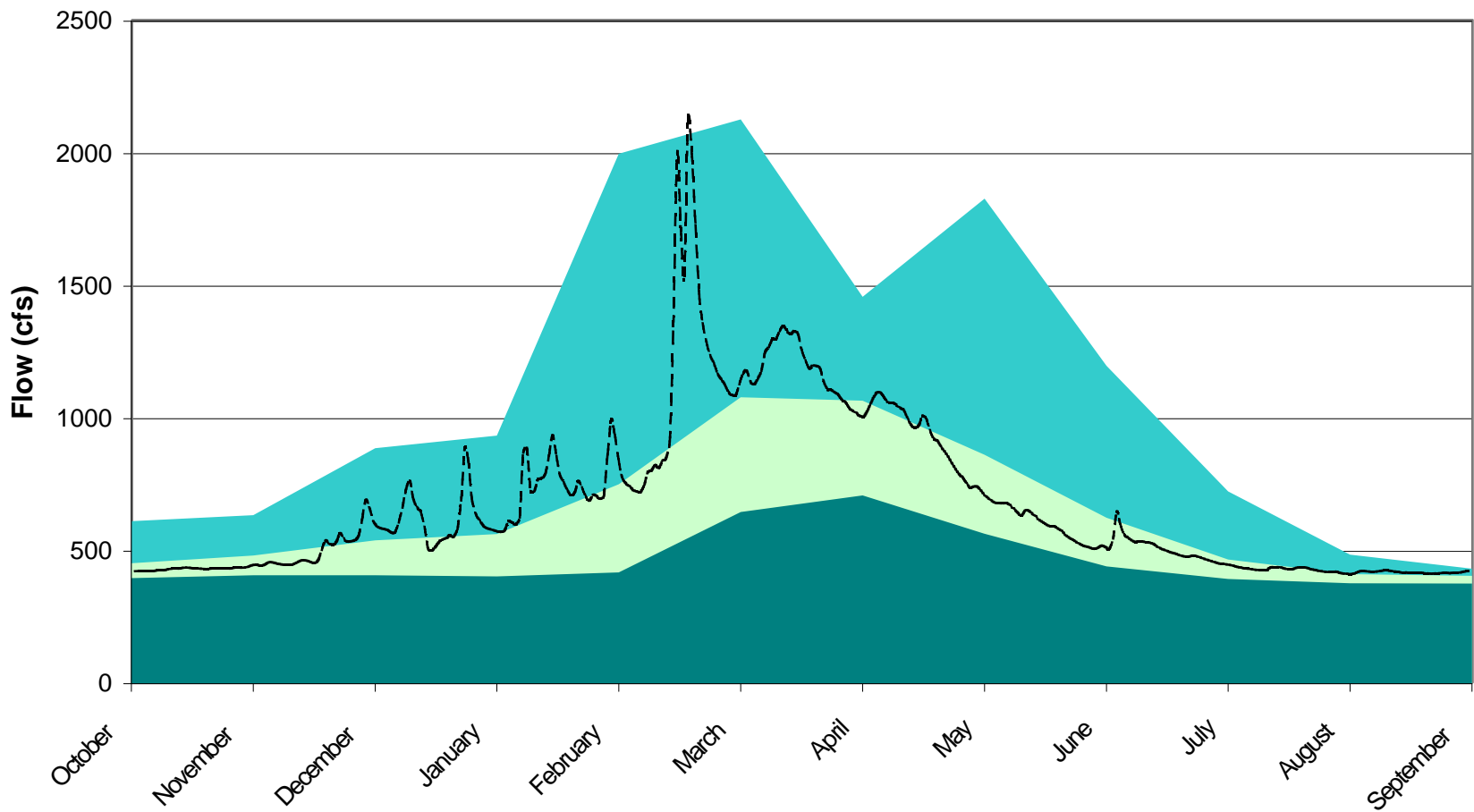
FIGURE 5.5c:

Little Spokane River at Dartford, WA (USGS gage 12431000)

Spokane County
Watershed Assessment

013-1392, id142 graphs.xls, 07/23/2001





Legend

- Max Recorded Daily Flow
- Average Daily Flow
- Min Recorded Daily Flow
- 1999 - Average Year

POR: 1949-1951, 1998-1999

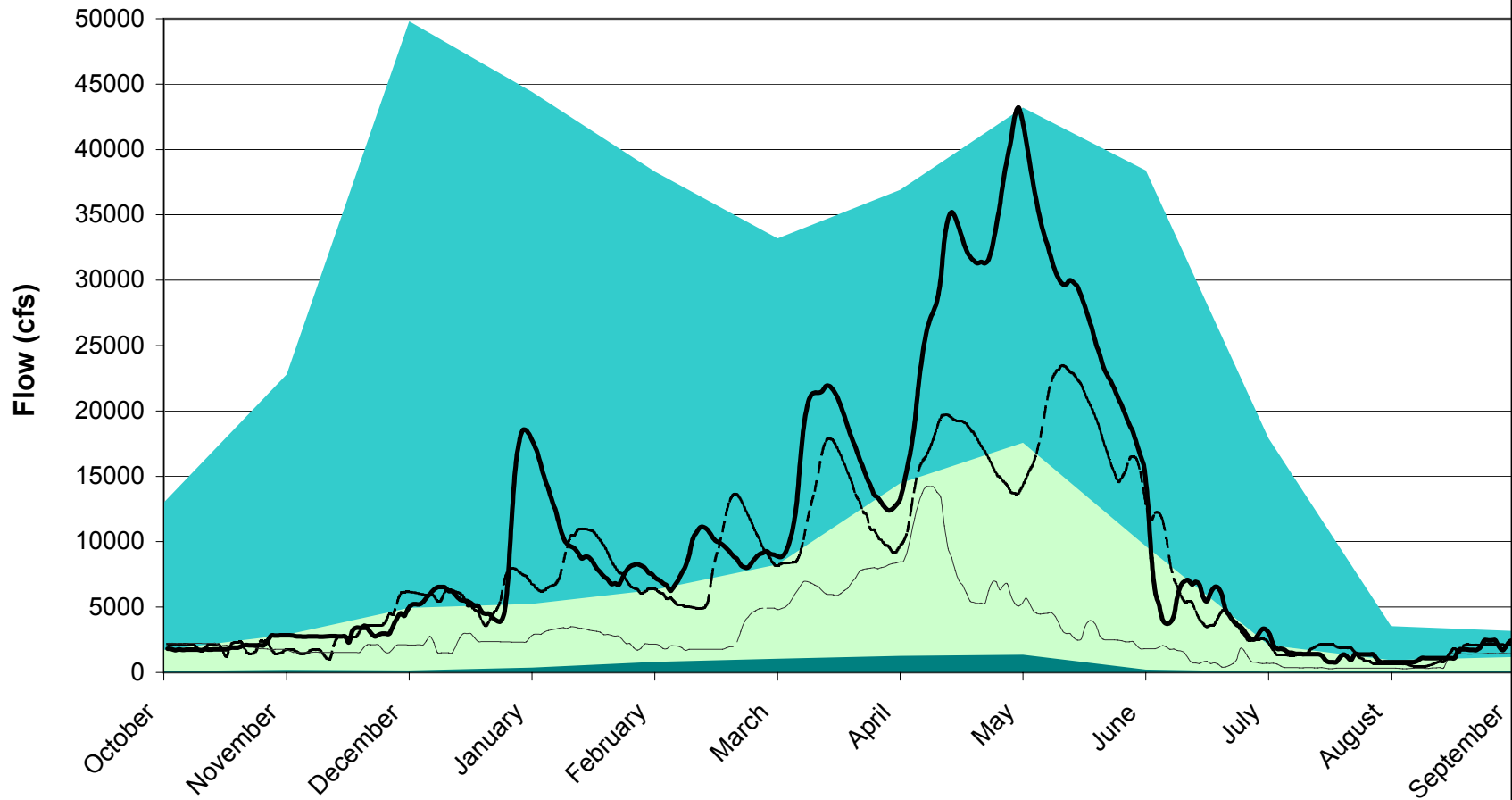
FIGURE 5.5d:

Little Spokane River Near Dartford, Wash. (USGS gage 12431500)

Spokane County
Watershed Assessment

013-1392, id146 graphs.xls, 07/23/2001





Legend

- Max Daily Recorded Flows
- Average Daily Flow
- Min Daily Recorded Flow
- 1999 - Average Year
- 1994 - Dry Year
- 1997 - Wet Year

POR 1976 - present

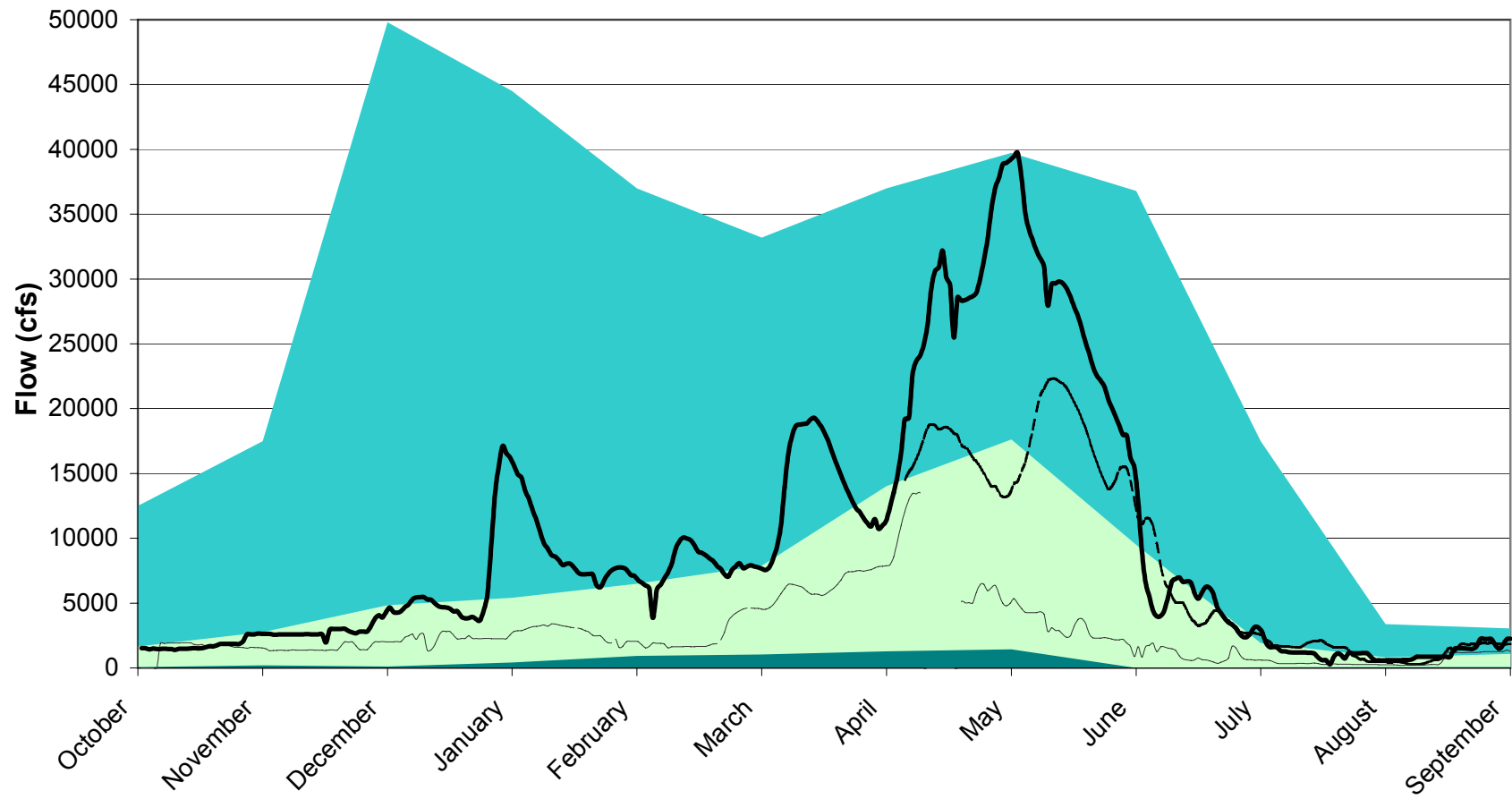
FIGURE 5.5e:

Spokane River near Post Falls, ID (USGS gage 12419000)

Spokane County
Watershed Assessment

013-1392, id172 graphs.xls, 10/15/2001





Legend

- Max Recorded Daily Flow
- Average Daily Flow
- Min Recorded Daily Flow
- 1999 - Average Year
- 1994 - Dry Year
- 1997 - Wet Year

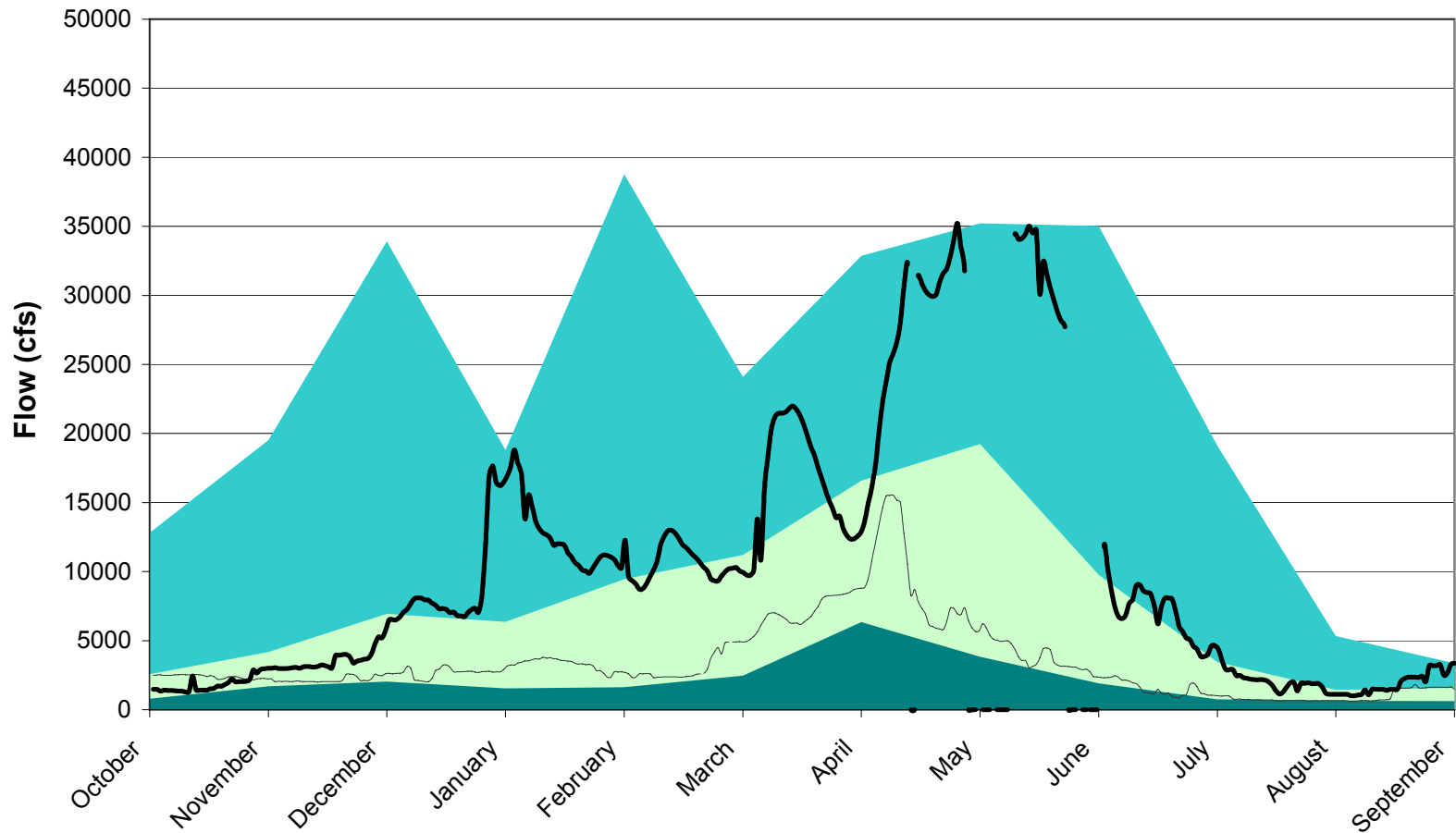
POR 1930 - 1983, 1994-1999. 93-98 collected by SCC

FIGURE 5.5f:

**Spokane River abv Liberty Bridge nr Otis Orchard,
Wash. stn. 12419500
Spokane County
Watershed Assessment**

013-1392, id164graphs.xls, 07/24/2001





Legend

- Max Daily Recorded Flow
- Average Daily Flow
- Min Daily Recorded Flow
- 1994 - Dry Year
- 1997 - Wet Year

POR 1949-1952, 1993- 1998. Note 1993 - 1998 collected by SCC

FIGURE 5.5g:

**Spokane River Blw Greene St at Spokane, WA
(USGS gage 12422000)**

Spokane County
Watershed Assessment

013-1392, id170 graphs.xls, 07/24/2001



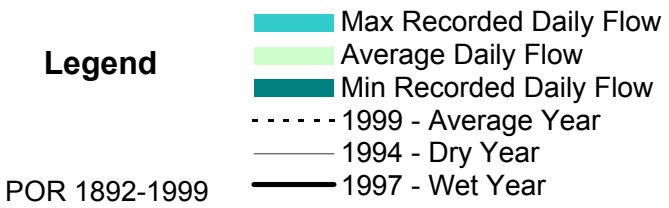
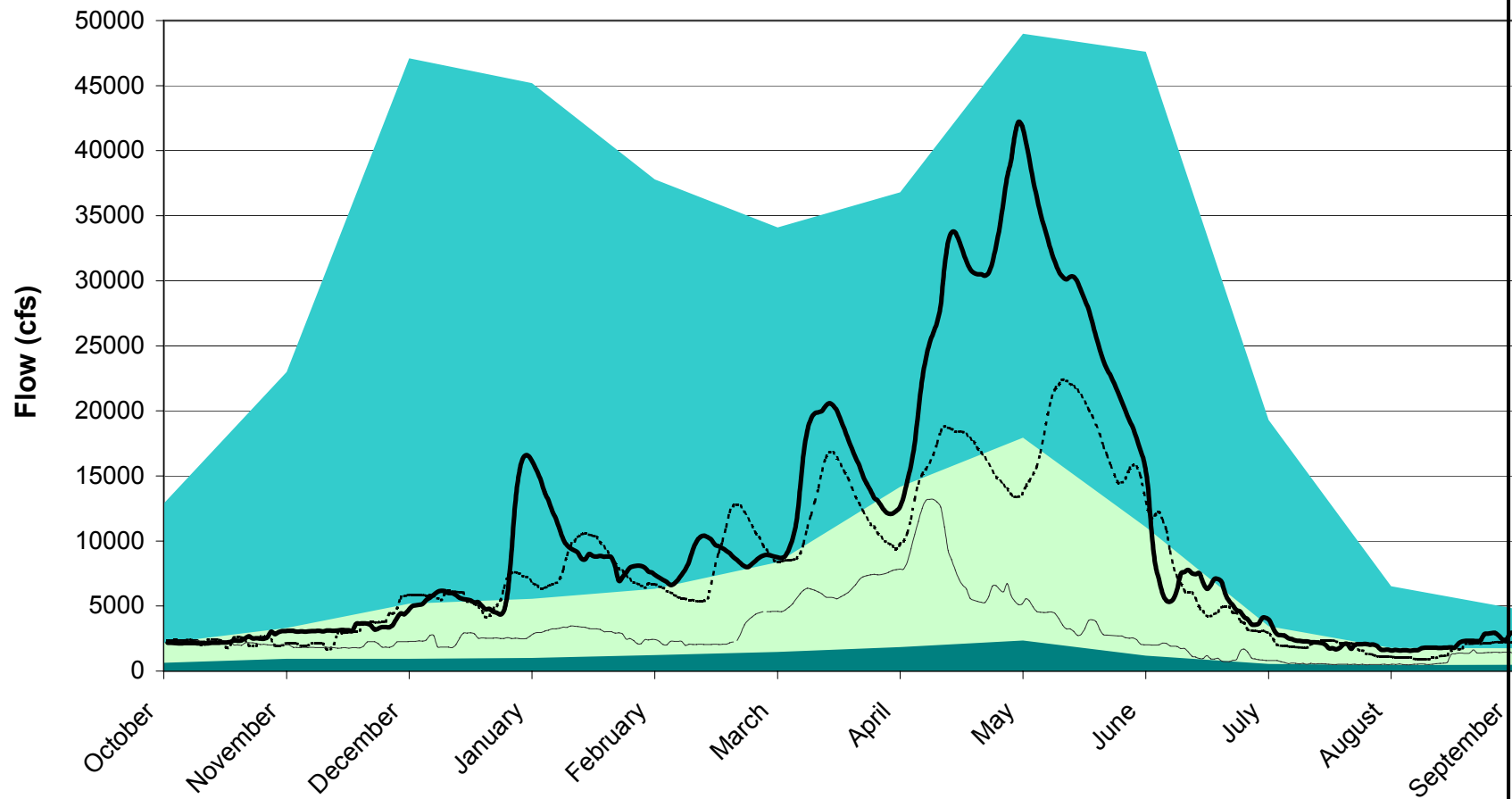


FIGURE 5.5h:
Spokane River At Spokane, WA (USGS gage 12422500)
 Spokane County
 Watershed Assessment
 013-1392, id169 graphs.xls, 07/24/2001

