

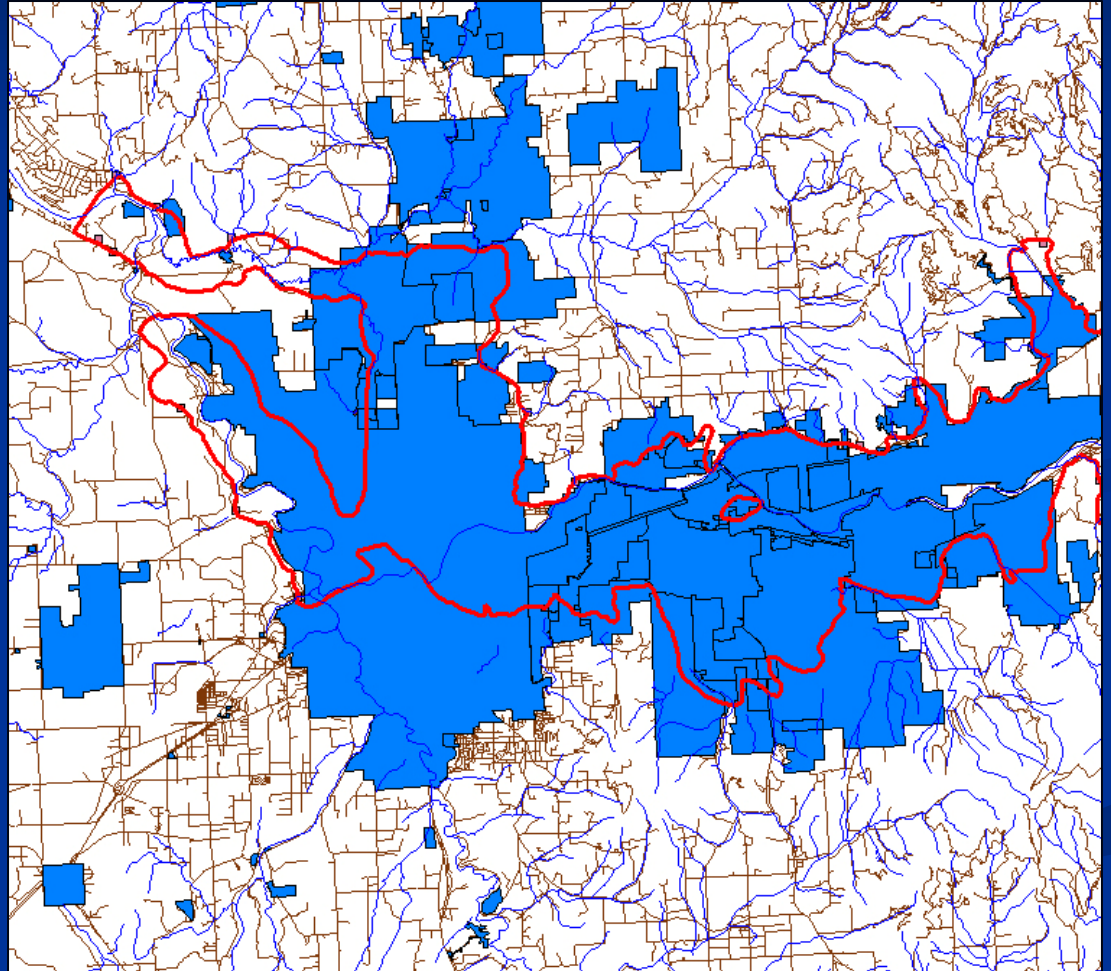
Instream Flow Rule: Geographic Extent

Instream Flow Rule: Geographic Extent

- Control point determines geographic extent of rule.
- If furthest downstream control point is the Spokane gage rule will apply to WRIA 57, and will not include WRIA 54.

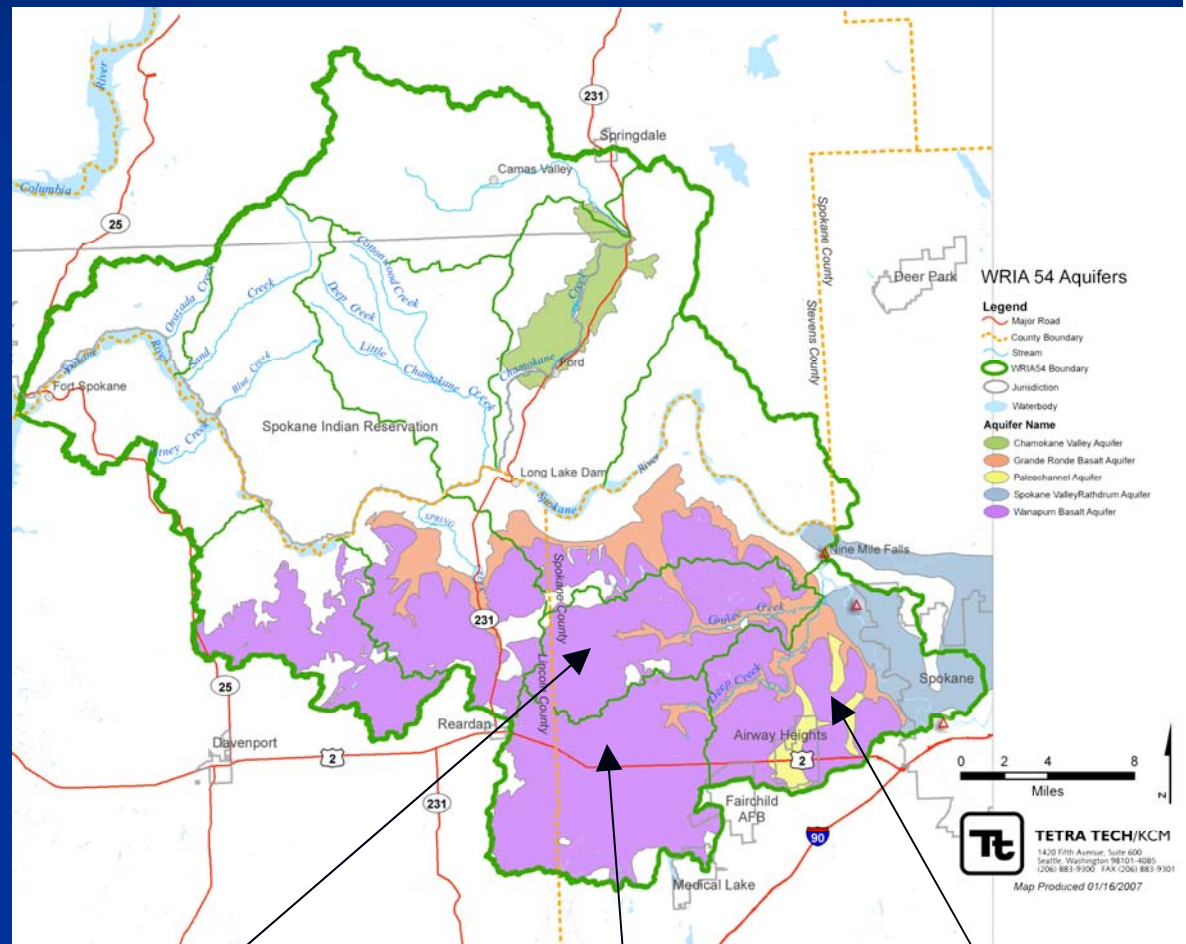
Control Point at Spokane

- Water purveyors supply most domestic water
- Exempt wells not as pertinent



Control Point(s) added Downstream

- Point at Gunclub: – potentially include Airway & Deep Creek subbasins
- Point at Nine Mile: – potentially include Airway, Deep Creek, and Coulee Creek Subbasins

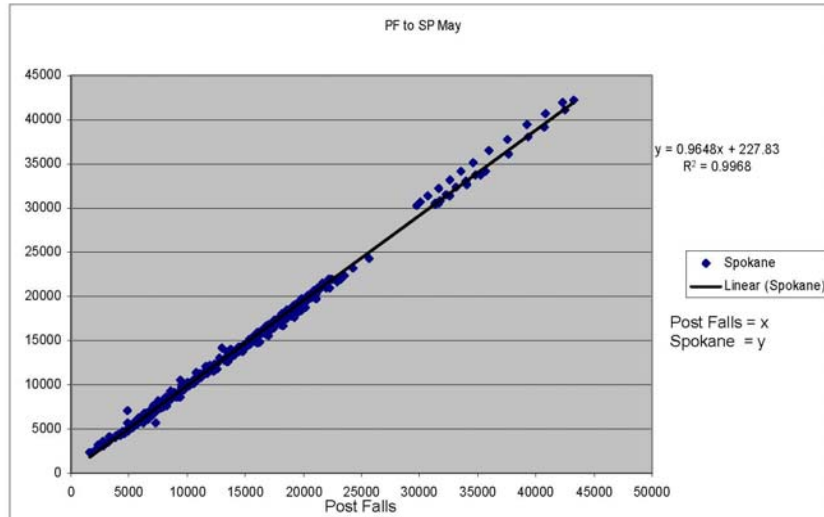


Coulee Creek Subbasin Deep Creek, N-S Subbasin Airway Subbasin

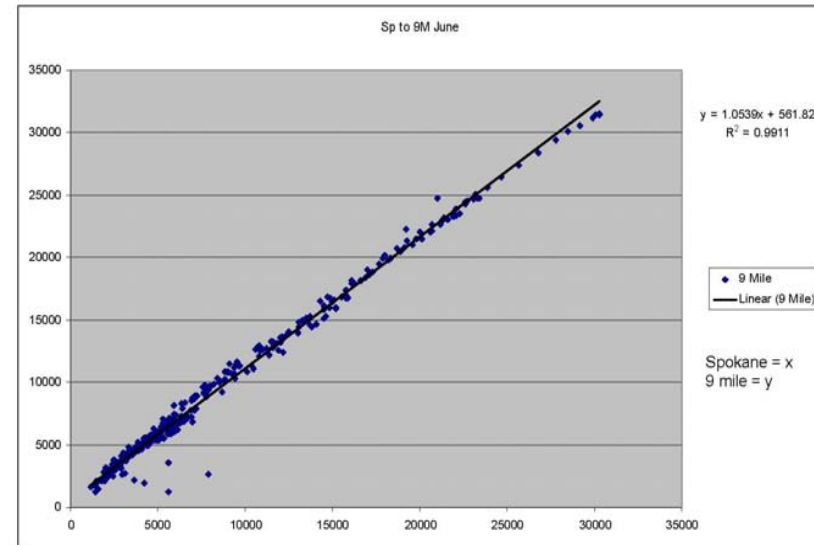
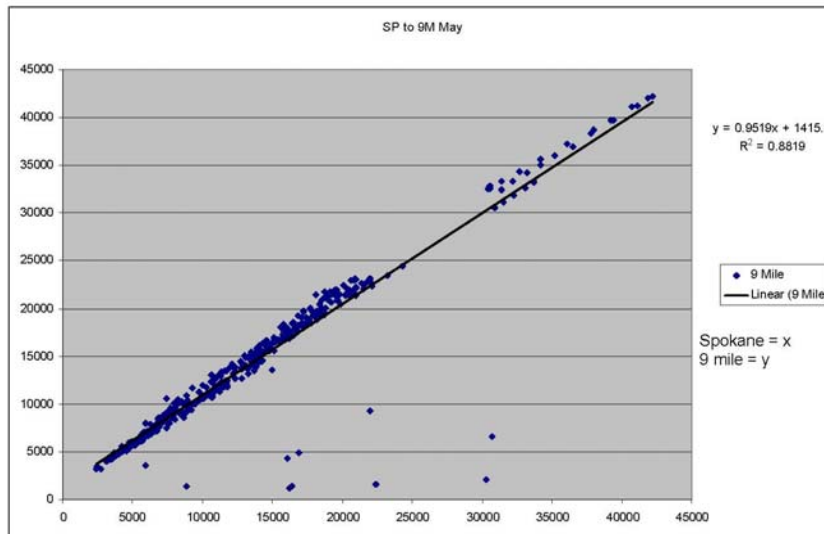
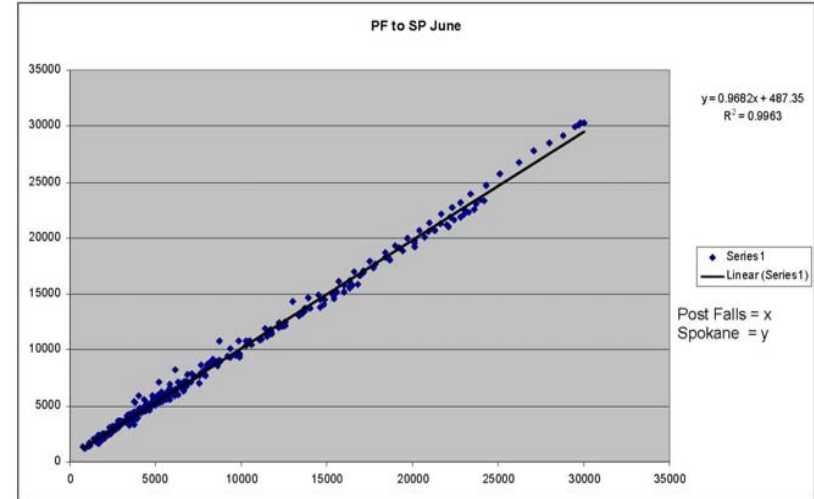
One Control Point?

- Flow at Post Falls, Spokane, and Nine Mile from 1986-99 show a linear relationship
- Linear relationship can be used to develop one downstream control point to achieve stream flows upstream to Post Falls

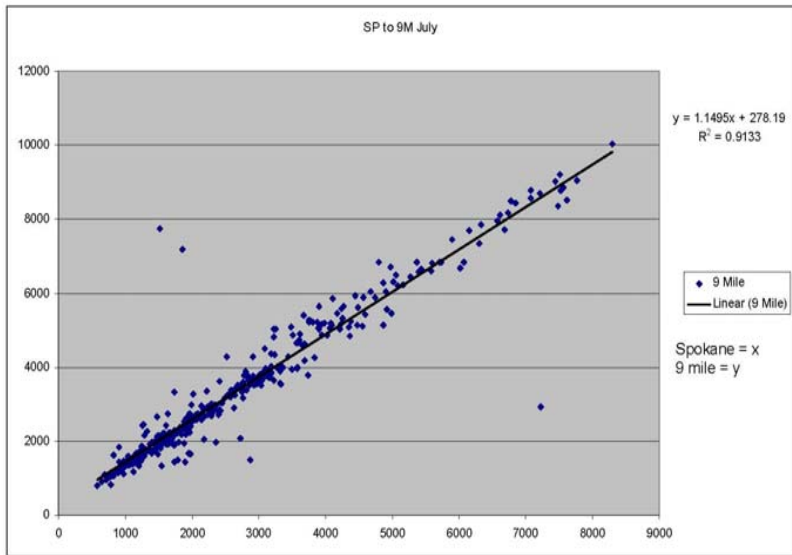
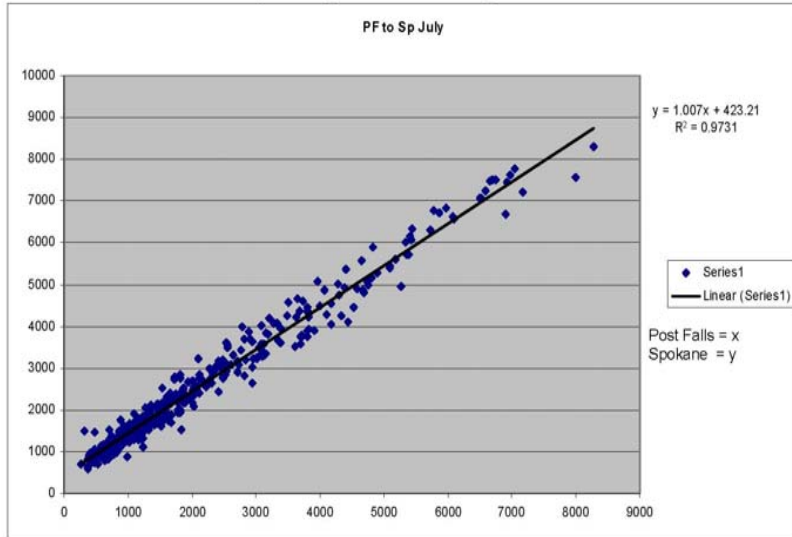
Stream Flow Relationships for Post Falls/Spokane and Spokane/9 Mile Based on Daily Discharge for the Month of May 1986-1999



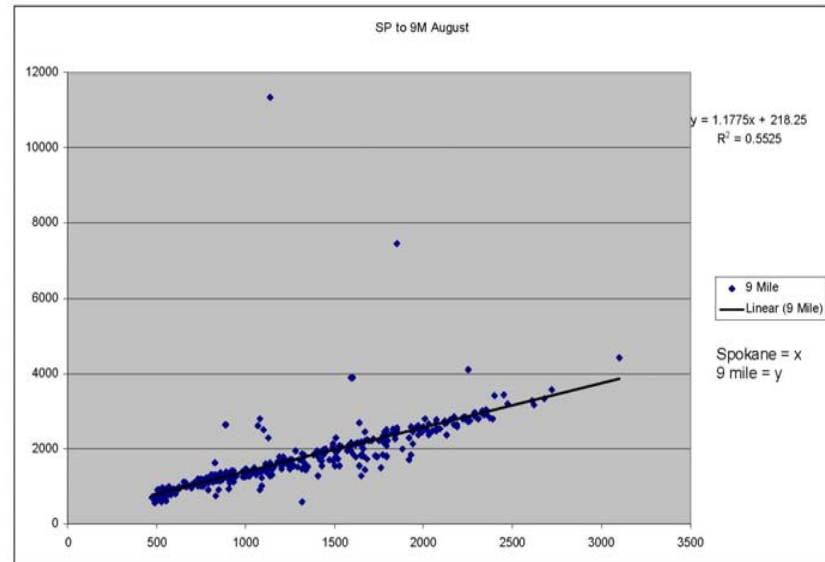
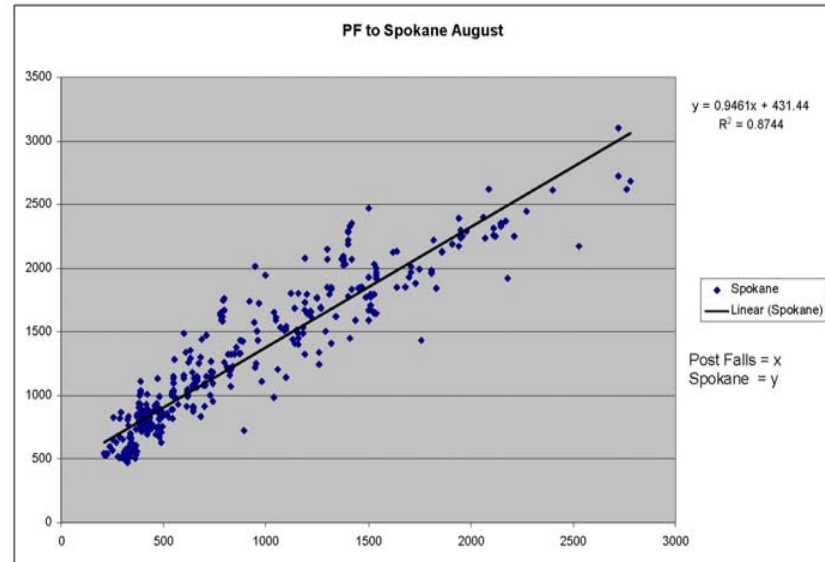
Stream Flow Relationships for Post Falls/Spokane and Spokane/9 Mile Based on Daily Discharge for the Month of June 1986-1999



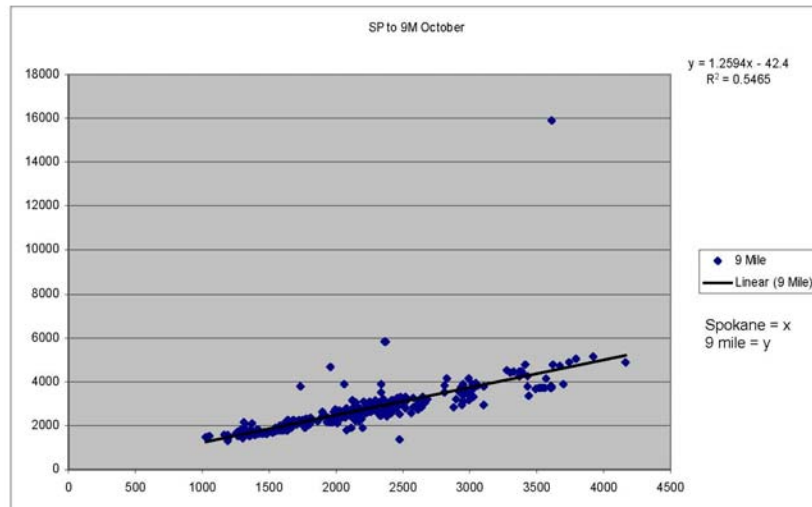
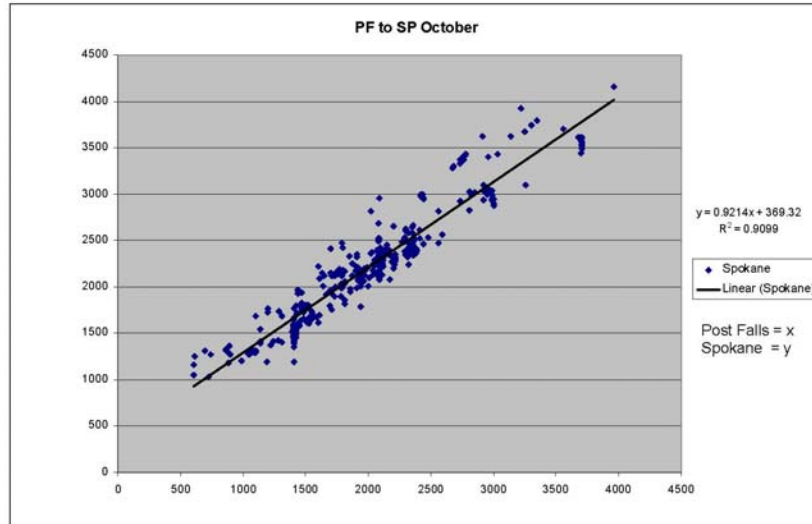
Stream Flow Relationships for Post Falls/Spokane and Spokane/9 Mile Based on Daily Discharge for the Month of July 1986-1999



Stream Flow Relationships for Post Falls/Spokane and Spokane/9 Mile Based on Daily Discharge for the Month of August 1986-1999



Stream Flow Relationships for Post Falls/Spokane and Spokane/9 Mile Based on Daily Discharge for the Month of October 1986-1999



May		
Post Falls Gage	653	912
Spokane Gage	850	1100
9 Mile Gage	2225	2462
June		
Post Falls Gage	391	649
Spokane Gage	850	1100
9 Mile Gage	1458	1721
July		
Post Falls Gage	421	669
Spokane Gage	850	1100
9 Mile Gage	1255	1543
August		
Post Falls Gage	467	731
Spokane Gage	850	1100
9 Mile Gage	1219	1514
September		
Post Falls Gage	583	874
Spokane Gage	850	1100
9 Mile Gage	1145	1426

Possible SVRP Model Runs

- 75% and 100% inchoate water right
 - Goal: water availability & effect on river flows
- Full inchoate water right, significant amount pumped out of basin
 - Goal: water availability & effect on river flows while exporting water out of basin
- Exaggerated pumping in WRIA 55
 - Goal: effects of WRIA 55 withdrawals on availability in WRIA 57