

Pend Oreille County

SHORELINES PROGRAM

Legend

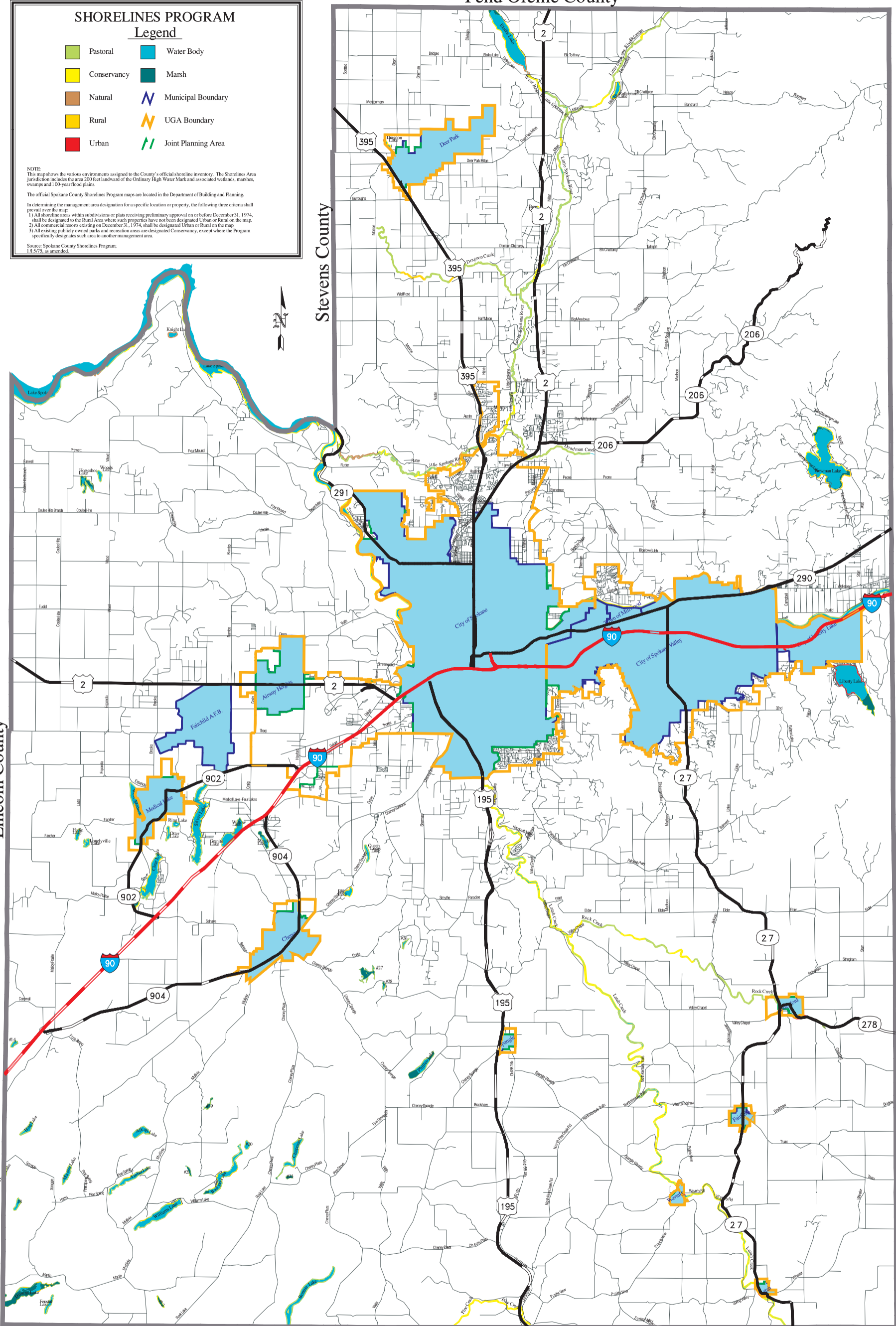
- Pastoral
- Conservancy
- Natural
- Rural
- Urban
- Water Body
- Marsh
- Municipal Boundary
- UGA Boundary
- Joint Planning Area

NOTE:
This map shows the various environments assigned to the County's official shoreline inventory. The Shorelines Area jurisdiction includes the area 200 feet landward of the Ordinary High Water Mark and associated wetlands, marshes, swamps and 100-year flood plains.

The official Spokane County Shorelines Program maps are located in the Department of Planning.

In determining the management area designation for a specific location or property, the following three criteria shall prevail over the map:
 1) All shoreline areas within subdivisions or plats receiving preliminary approval on or before December 31, 1974, shall be designated to the Rural Area where such properties have not been designated Urban or Rural on the map.
 2) All commercial resorts existing on December 31, 1974, shall be designated Urban or Rural on the map.
 3) All existing publicly owned parks and recreation areas are designated Conservancy, except where the Program specifically designates such area to another management area.

Source: Spokane County Shorelines Program
1/15/75, as amended.



Whitman County

Whitman County

This map was published by the Spokane County Department of Building and Planning as a general planning tool. Due to the differing quality of source documents, the Department cannot accept responsibility for errors or omissions, and therefore, there are no warranties which accompany this material.

